

ANNUAL REPORT 2003



BENGUET STATE UNIVERSITY

VISION

A premier
University that
develops human
resources imbued with a
culture of excellence and
social consciousness,
and promotes environment-
friendly technologies
to uplift the quality
of life.

MISSION

BSU shall pursue
sustainable resource
development through
quality instruction,
client-oriented research,
participatory extension
and viable production
system.

BSU Annual Report Task Force

Chairman: Dr. Darlyn D. Tagarino

Members: Dr. Marlene B. Atinyao, Dr. Erlinda B. Alupas

Support Staff: Ms. Ahri Christine A. De Mesa, Julie Ann R. Dugat, Flordeliza O. Naje

Contributors: Vice Presidents, Deans, Directors and Unit Heads

Editor: Dr. Rodolfo T. Abastilla

Consultant: Dr. Rogelio D. Colting



Republic of the Philippines
BENGUET STATE UNIVERSITY
La Trinidad, 2601 Benguet

4 May 2004

HER EXCELLENCY
President Gloria Macapagal-Arroyo
Malacañang Palace, Manila

Thru: **Hon. Rolando R. Dizon**
Chairperson, Commission on Higher Education
and BSU Board of Regents
DAP Building, San Miguel Avenue
Ortigas Center, Pasig City

MADAM:

I have the honor to submit the Annual Report 2003 of the Benguet State University. It summarizes our accomplishments as reflected in the programs, activities and projects that go in line with our vision and mission. Our achievements center on our four primary functions: instruction, research, extension and production.

This humble report manifests our strong commitment to perform our mandates with excellence, relevance and productivity for a strong Republic.

More power to you.

ROGELIO D. COLTING
President

Table of Contents

| | Page |
|---|-----------|
| Transmittal Letter | i |
| Table of Contents | ii |
| Foreword | iii |
| Executive Summary | iv |
| ACADEMIC AFFAIRS | 1 |
| ▪ Enrollment | 2 |
| ▪ Graduates | 4 |
| ▪ Performance in Licensure/ Board Examination | 7 |
| ▪ Student Awards | 8 |
| ▪ Student Organizations | 9 |
| ▪ Faculty Development | 9 |
| ▪ Accreditation | 12 |
| ▪ University Health Services | 13 |
| ▪ University Registrar | 13 |
| ▪ University Library Services | 14 |
| ▪ Open University | 15 |
| RESEARCH, DEVELOPMENT AND EXTENSION | 17 |
| ▪ Technologies/ Significant Information Generated | 18 |
| ▪ Programs/ Projects Implemented | 23 |
| ▪ Extension Services | 29 |
| ▪ Publication | 35 |
| ▪ R and D Awards | 36 |
| ▪ Linkages/ Partnership | 36 |
| ▪ RDE Staff Development | 39 |
| PRODUCTION | 41 |
| ▪ Income Generating Projects | 41 |
| ▪ New Projects Implemented | 42 |
| ▪ Salient Development on Production | 42 |
| ADMINISTRATION | 44 |
| ▪ Governance | 45 |
| ▪ Administration Staff Development | 47 |
| ▪ Financial Resources | 50 |
| MAJOR FOREIGN LINKAGE | 51 |
| ▪ The PIUC | 51 |
| BUGUIAS CAMPUS | 53 |
| BOKOD CAMPUS | 55 |
| A FORWARD LOOK | 56 |
| ▪ Meeting Challenges Head On | 56 |
| BOARD OF REGENTS | 58 |
| ADMINISTRATIVE COUNCIL | 59 |
| ORGANIZATIONAL STRUCTURE | 60 |
| PROPOSED ORGANIZATIONAL STRUCTURE | 61 |
| ACADEMIC PROGRAMS | 62 |

Foreword

Under the new leadership which was installed in July 2003, a new vision was crafted with the participation of all stakeholders. The new vision is for BSU to be a premier state university developing human resources imbued with a culture of excellence and social consciousness and empowered to compete in a global society. It also considers BSU as a regional research center generating and promoting ecologically sound technologies for the development of man and the environment.



Building on with the excellent programs of the previous administration and guided by the new vision, the University is moving forward and continuing to serve its clientele with renewed commitment and dynamism. Strategic networks with local and international institutions and alliances with the private sector are also being pursued in the areas of instruction, research, extension services and income generation.

The concerted efforts of all sectors in the university and the community must be commended. With the strong support of everyone, BSU was able to accomplish much this year. It shall continue to do so and it shall maintain its key role in the development of the Cordillera region and the country as a whole.

The present leadership of the University acknowledges the great contribution of the administration of Dr. Cipriano C. Consolacion, BSU President until his retirement in June 2003, for the various accomplishments presented in this annual report

Rogelio D. Colting, Ph. D.
President

Executive Summary

2003 was marked by the appointment of a new president who took over the wheel from retiring Dr. Cipriano C. Consolacion. The first half of the year was characterized by the search for a new president and the preparations for a smooth turnover; and the other half, by the testing of the waters for the new president to set sail towards an enhanced University vision and mission.

These events underwent a peaceful and orderly process. Thus, the University came up with achievements that it can be proud of. As an overview, these achievements are as follows:

ON ACADEMIC AFFAIRS

A total of 1,072 graduated from the various undergraduate and graduate programs. For the year, offered were eight doctoral degrees, 28 Master of Science/Art degrees, 16 undergraduate degrees, three post BS non-degree programs, four post secondary non-degree programs and two special courses. Total enrollment as of first semester of school year 2003-2004 was 7,032 in all courses. For the graduates of SY 2002-2003, 25 undergraduate students were *cum laude*.

The University continued to perform well in licensure examinations. It exceeded national standards in 8 out of 11 examinations scheduled during the year. Notable performance was made by the College of Teacher Education graduates for the teacher examinations in both the elementary and secondary levels. Two board takers placed sixth and ninth in the Licensure Examination for Veterinarians. The university ranked

fourth in the Board Examination for Librarians and fifth in the Board Examination for Agriculturists.

Scholarship grants were given to 934 and 563 students during the first and second semesters, respectively. Two BSU athletes bagged gold and bronze medals in the SEA Games in Vietnam.

The faculty consist of 82 Ph/Ed and 126 MS/MA degree holders. Three faculty members obtained their doctorate and nine their masters in 2003.

Seventy student organizations were accredited for the year. The Highland Cowboys/girls brought home laurels as 1st and 2nd runner ups in Rodeo competitions. The same organization notched the 7th place in the Ten Accomplished Youth Organization award by the National Youth Commission and the Jaycees. Betty Listino and Brenda Allay, awarded Presidential Youth Fellows and as two of the ten outstanding students of CAR.

The integrated campuses of Buguias and Bokod had total enrolments of 356 and 747, respectively. The Buguias campus graduated 33 in the Bachelor of Secondary Education, BS Industrial Education and in various short courses. The Bokod campus graduated 54 for the BS Industrial Education and in the BS in Industrial Technology courses.

The University continued to ensure quality auxiliary services by hiring of a new dentist and assigning a part-time faculty medical technologist for health services, and designating a new

registrar to implement new procedures and processes for effective and efficient admission services. Support for the modernization of the University library was continued with the acquisition of 699 book titles, 73 periodical titles, 73 titles of subscriptions and two electronic titles.

RESEARCH AND EXTENSION

Significant technologies generated, include development of a sweetpotato variety named BSU SP02 or "Bengueta," development of seven organisms for bio-control for chrysanthemum diseases, identification of promising varieties of potato and garden pea resistant to leafminer and other diseases, and varietal/clones selection of potato and yams with potentials for processing.

The University for 2003 has about 77 research and development projects/studies conducted by the Horticultural Research Institute, the Institute of Highland Farming Systems and Agroforestry, the Institute of Social Research and Development, the Northern Philippine Rootcrops Research and Training Center, and selected colleges.

The BSU On-the-Air through DZWT is a regular program of the University where significant technologies and information were disseminated. An array of about 70 different topics were aired through this program for the year 2003. A new publication that features scientific papers, called the RDE Forum, was published alongside four volumes of the BSU Research Journal and two issues of the RANGTAY. Five technical materials and eight leaflets and pamphlets were widely distributed.

Two quick-response services were provided to the municipalities of Kabayan on the control management of earthworm and the rejuvenation of coffee and rooting methods of mountain tea. Four participatory technology adoption projects were implemented. Numerous trainings and on-farm demonstrations were also conducted.

Twenty technical papers were presented in various training, seminars and workshops by faculty staff and researchers. Five R & D awards were obtained in regional symposia. About 37 linkages/partnerships with local and international organizations were forged/implemented during the year. The RDE staff attended/participated in about 30 seminars, workshops, trainings and technical meetings. Two RDE personnel went on long-term scholarship.

PRODUCTION

An income of ₱26 million was gained from income-generating projects. More than ₱2 million came from agricultural projects and ₱749,270 from non-agricultural projects. Two new projects for the year were the build-lease-transfer agreement with the McDonald's Corporation and the operation of the Freshdrops Purified Water Refilling Station.

GENERAL ADMINISTRATION

Dr. Rogelio D. Colting upon assumption of office bared a 10-point agenda for his 100 days of administration, fruits of which became apparent at the end of the period. A new administrative team was organized with three new Vice Presidents, and a number of new deans, directors and

department chairpersons. Similar changes in the University Board of Regents took place with the appointment of Bro. Rolando R. Dizon as the new Chair of the Commission on Higher Education and concomitantly, chair of the Board of Regents. Two other new members of the governing board were the presidents of the BSU Faculty Club and the Supreme Student Council, respectively.

For 2003, the University Administrative Council held seven regular meetings and four special meetings. A total of 101 resolutions were acted upon during these meetings. The Board of Regents passed 69 resolutions.

From August to December, the new leadership instituted a series of activities that were aimed at reviewing and streamlining University operations. With these activities, were identified a financial management protocol was

drafted; areas for improvement in University operations were identified by a team of internal and external reviewers; and the Medium-Term Plan 2004 to 2007 and Ten-Year Strategic Plan 2004 –2012 were revised.

Financial management was improved through the operationalization of the University budget committee, deliberations on proper use of university resources and minimization of disallowances. Fund sourcing was intensified through networking. The linkage with Saint Louis University and the Flemish universities of Belgium remain a vital source of developmental funds.

Definite steps to realize specific future goals are specified in the BSU Medium-Term Plan 2004-2007, a comprehensive document that presents the new vision, mission, goals and objectives of the university.

ACADEMIC AFFAIRS

The Year that was 2003 . . .

As a premier academic university in the Cordillera, Benguet State University pursues excellence. Proof to this is the remarkable performance of its graduates in the various licensure examinations and in various international, national, regional and local competitions. True to its mandate, BSU strives to mold students who enter into its portals into graduates excelling in their fields of endeavor and being responsive to the needs of times.

Enrolment for SY 2003-2004 was slightly lower than that in SY 2002-2003. However, the enrolment in post-secondary short courses more than doubled, an indication that more students are opting for skills training. Although enrolment decreased, the number of graduates increased, with the greatest increase in the number of graduates in postgraduate diploma and certificate courses.

The University, in its pursuit of academic excellence, has a faculty development program that is responsive to the needs of times. More faculty members were given the privilege to pursue higher degrees and to write publications. As a result, five faculty members finished their MS and three finished their PhD in various fields in 2003. Six faculty members given study leave privileges are expected to finish their courses in 2004. Faculty members are also encouraged to attend trainings, conferences, symposia, seminars, workshops and the like in order to broaden their perspective and make them better human engineers and agents of change.

The University continues to nurture its students by providing not only quality education but also by giving them the opportunity to pursue their degrees through scholarship grants. It fully supports student activities by financially supporting them to join competitions and attend seminars, symposia and conferences. Indeed 2003 has been an exhausting but rewarding year for both students and faculty.



Enrolment

In the first semester of 2003-2004, the total enrollees in the various academic programs being offered in the University were 7,032. Of the total enrollees, 86.97% were enrolled in the various baccalaureate programs in the different colleges, 9.34 % in the doctorate and master programs and the

remaining 3.68 % in the diploma, certificate and other classes being offered in the University. In the second semester, enrollment in the doctorate, master and baccalaureate programs slightly decreased but enrollment in the diploma, certificate and other classes increased.

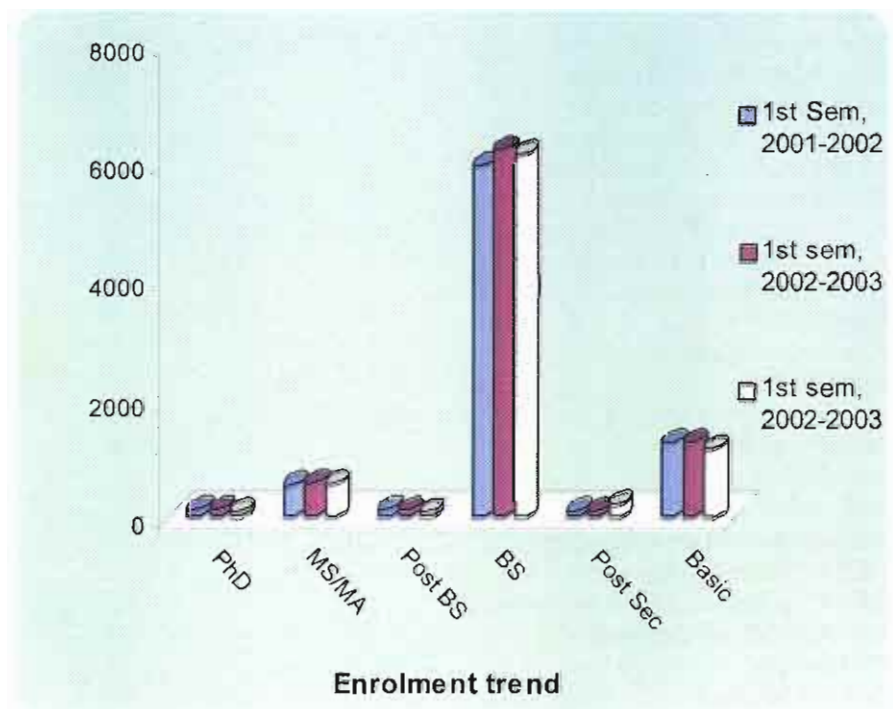
Enrollment in the different curricular programs

| DEGREE PROGRAM | | 2 ND SEM. 2002-03 | SUM 2003 | 1 ST SEM 2003-04 | 2 ND SEM 2003-04 | |
|---------------------------------------|--------------------------------|--|-------------|--------------------------------|--------------------------------|----|
| PhD in | Agricultural Education | 4 | 1 | 2 | 2 | |
| | Agronomy | 6 | | 4 | 7 | |
| | Educational Management | 18 | 13 | 25 | 18 | |
| | Horticulture | 4 | 5 | 4 | 9 | |
| | Language Education | 11 | | 11 | 8 | |
| | Rural Development | 42 | 11 | 36 | 39 | |
| | Science Education | 4 | 4 | 3 | 6 | |
| | EdD in Educational Management | 24 | 9 | 13 | 7 | |
| MS in | Agricultural Education | 8 | 10 | 11 | 12 | |
| | Agronomy | 5 | | 5 | 5 | |
| | Animal Science | 5 | 1 | 3 | 7 | |
| | Biology | 22 | 12 | 16 | 18 | |
| | Economics | 2 | | | | |
| | Entomology | 6 | | 7 | 4 | |
| | Extension | 2 | 2 | 2 | 2 | |
| | Forestry: Silviculture | 2 | | 2 | 3 | |
| | Forestry: Watershed Management | 11 | | 11 | 8 | |
| | Horticulture | 11 | 1 | 4 | 5 | |
| | Plant Pathology | 1 | 2 | 7 | 6 | |
| | Rural Development | 27 | 8 | 24 | 19 | |
| | Soil Science | 3 | 1 | 6 | 10 | |
| | MA in | Applied Statistics | 11 | 3 | 14 | 14 |
| | | Chemistry | 13 | 8 | 10 | 8 |
| | | English as a 2 nd language | 40 | 46 | 49 | 54 |
| | | Filipino as a 2 nd language | 17 | 26 | 12 | 12 |
| | | General Science | 10 | 18 | 14 | 13 |
| | | Home Economics | 18 | 14 | 16 | 13 |
| | | Mathematics | 43 | 33 | 32 | 32 |
| Physical Education | | 66 | 63 | 47 | 38 | |
| Physics | | 7 | 6 | 6 | 11 | |
| Technology & HE | | 11 | 9 | 5 | 4 | |
| Social Studies | | 26 | 24 | 23 | 32 | |
| MAEd in | | Contextual Instruction | 4 | 1 | 0 | 0 |
| | Educ'l Admn & Supervision | 56 | 44 | 57 | 46 | |
| | Elementary Education | 96 | 73 | 92 | 94 | |
| | Guidance & Counselling | 16 | 8 | 21 | 21 | |
| Masters in Public Administration | 86 | 34 | 61 | 62 | | |
| Masters of Resource System Management | 5 | 0 | 2 | 2 | | |
| Subtotal | | 753 | 490 | 657 | 651 | |

| DEGREE PROGRAM | 2 ND SEM. 02-03 | SUM 03 | 1 ST SEM 03- 04 | 2 ND SEM 03- 04 |
|---|-------------------------------|--------------|-------------------------------|-------------------------------|
| B. Elementary Education | 843 | 80 | 870 | 902 |
| B. Secondary Education | 964 | 68 | 1142 | 1017 |
| B.S. Agriculture | 966 | 217 | 1118 | 1092 |
| B.S. Agribusiness | 197 | 44 | 134 | 185 |
| B.S. Agricultural Education | 213 | 46 | 212 | 204 |
| B.S. Agricultural Engineering | 260 | 37 | 293 | 309 |
| B.S. Applied Statistics | 78 | 2 | 92 | 88 |
| B.S. Development Comm. | 124 | 35 | 134 | 135 |
| B.S. Environmental Science | 249 | 81 | 212 | 220 |
| B.S. Entrepreneurship | 128 | 28 | 144 | 52 |
| B.S. Forestry | 243 | 82 | 226 | 205 |
| B.S. Home Economics | 369 | 38 | 361 | 330 |
| B.S. Information Tech | 106 | 28 | 129 | 110 |
| B.S. Nursing | 399 | 203 | 489 | 458 |
| B.S. Nutrition & Dietetics | 148 | 35 | 166 | 165 |
| Doctor of Veterinary Med | 354 | 38 | 394 | 370 |
| Subtotal | 5,641 | 1,062 | 6,116 | 5,842 |
| Diploma in Physical Education (Post BS) | 19 | 15 | 16 | 16 |
| Diploma in Agro-forestry (Post Sec) | 67 | 30 | 77 | 71 |
| Certificate in Automotive Tech (Post Sec) | 34 | 0 | 49 | 53 |
| Forest Ranger Certificate Course (Post Sec) | 32 | 0 | 39 | 58 |
| Cross-enroll | 24 | 0 | 0 | 51 |
| Special Class | 82 | 0 | 0 | 101 |
| Subtotal | 146 | 45 | 259 | 350 |
| GRAND TOTAL | 6540 | 1597 | 7032 | 6843 |

Enrolment trend.

There was a slight decrease (-0.64%) in total enrolment in the first semester of 2003-04. The enrolment in PhD and post-BS courses decreased by 16% and 20%, respectively. However, there was a 134% increase in the post secondary non-degree courses, an indication that an increasing number of high school graduates are opting for skills training.



Graduates

A great majority of graduates (85.54%) in 2003 were those who finished different baccalaureate degrees. Only 5.32% (57) finished master degrees and 2.05% (22) doctorate degree. Of the baccalaureate degrees, most were graduates of courses in teacher education (36.75%) and agriculture (17.16%)

The Number of graduates was 5.92% higher in 2003 as compared to 2002. Except in the post-high school courses, graduates in the graduate, baccalaureate, post-baccalaureate degrees increased in 2003.



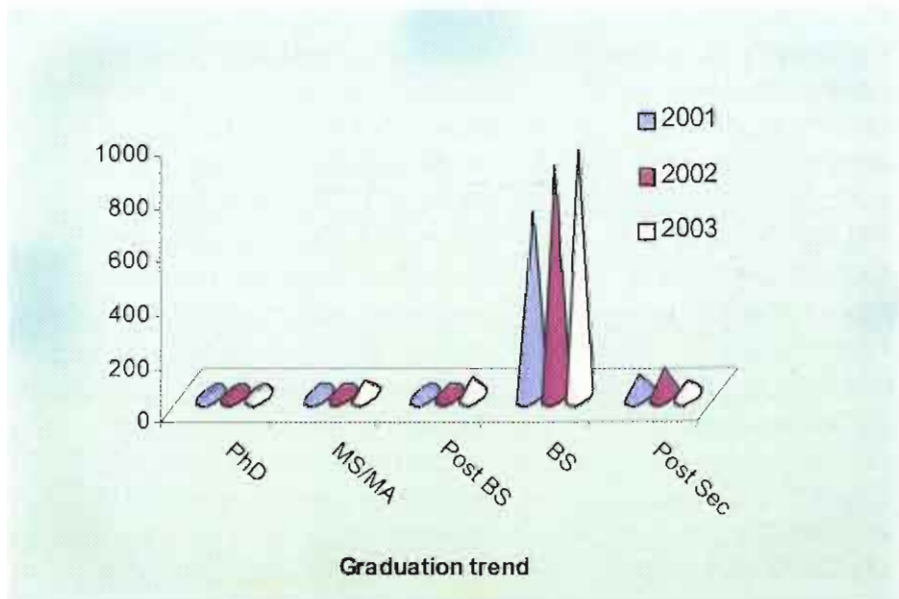
Number of graduates in various academic programs

| PROGRAMS | March 2003 | May 2003 | October 2003 | Total |
|--|------------|----------|--------------|-------|
| Graduate Degree | | | | |
| PhD in Agronomy | 2 | | | 2 |
| PhD in Agricultural Education | 1 | | | 1 |
| PhD in Language Education | 1 | 1 | 1 | 3 |
| PhD in Rural Development | 8 | 1 | 1 | 10 |
| PhD in Science Education: Biology | 1 | | | 1 |
| EdD in Educational Mgmt | 5 | | | 5 |
| MA in English as a 2 nd Language | 1 | 3 | 1 | 5 |
| MA in Filipino as a 2 nd Language | | 1 | | 1 |
| MA in Home Economics | | 2 | | 2 |
| MS in Mathematics | 2 | | | 2 |
| MA in Physical Education | 6 | 1 | 2 | 9 |
| MA in Physics | 2 | | | 2 |
| MA in Rural Development | 2 | 1 | | 3 |
| MA in Social Studies | 2 | 3 | | 5 |
| MA in Statistics | 1 | | | 1 |
| MAEd in Administration & Supervision. | | | 1 | 1 |
| MAEd in Elementary Education | 2 | | | 2 |
| MAEd in Context. Instruction | 1 | | 1 | 2 |
| MAEd in Guidance and Counselling | | 1 | | 1 |
| MS in Agricultural Education | 1 | 1 | | 2 |
| MS in Biology | 1 | | | 1 |
| MS in Horticulture | | 1 | | 1 |
| MS in Forestry | 1 | | | 1 |
| MPA | 10 | 4 | | 14 |

| | | | | |
|---|------------|-----------|-----------|-------------|
| Subtotal | 50 | 20 | 9 | 79 |
| Undergraduate/BS Degree | | | | |
| B. Elementary Education | 165 | 1 | 10 | 176 |
| B. Secondary Education | 150 | 1 | 12 | 163 |
| B.S. Agriculture | 131 | 5 | 18 | 154 |
| B.S. Agriculture Education | 45 | 0 | 10 | 55 |
| B.S. Agribusiness | 25 | 0 | 5 | 30 |
| B.S. Agricultural Engineering | 18 | 2 | 0 | 20 |
| B.S. Animal Technology | 1 | 0 | 0 | 1 |
| B.S. Applied Statistics | 16 | 0 | 1 | 17 |
| B.S. Development Communication | | 0 | 2 | 27 |
| B.S. Environmental Science | 41 | 4 | 1 | 46 |
| B.S. in Forestry | 45 | 1 | 8 | 54 |
| B.S. Home Economics | 87 | 0 | 0 | 87 |
| B.S. Information Technology | 18 | 1 | 0 | 19 |
| B.S. Nursing | 36 | 0 | 0 | 36 |
| B.S. Nutrition and Dietetics | 16 | 0 | 0 | 16 |
| Doctor of Veterinary Medicine | 16 | 0 | 0 | 16 |
| Subtotal | 838 | 15 | 67 | 917 |
| Non-degree | | | | |
| Diploma in Physical Education (Post BS) | 10 | 0 | 0 | 10 |
| Diploma in Agro-forestry (Post Sec) | 24 | 0 | 0 | 24 |
| Certificate in Automotive Tech (Post Sec) | 33 | 0 | 0 | 33 |
| Forest Ranger Certificate Course (Post Sec) | 4 | 0 | 5 | 9 |
| Subtotal | 71 | 0 | 5 | 76 |
| GRAND TOTAL | 959 | 35 | 76 | 1072 |

Graduation trends.

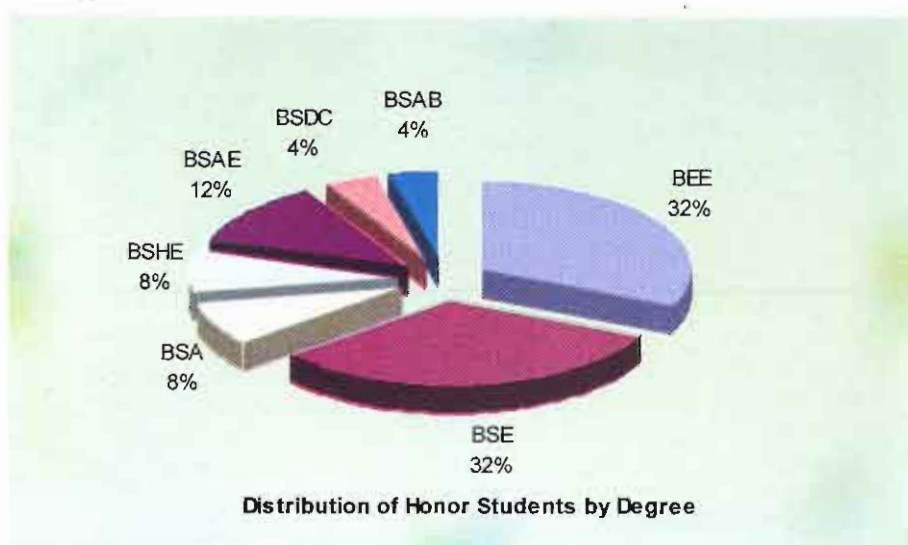
The total number of graduates for school year 2002-2003 increased by 5.92%. The greatest increase was posted by post-BS courses with a 65.91%, followed by Ph.D graduates. There was a decrease in the number of graduates in the non-degree post-secondary courses.



Honor Graduates

For SY 2002-2003, there were 25 honor students, comprising 2.98% of the total graduates in the different baccalaureate degrees in May 2003. A great majority of the honor students (76%) were from the teacher education degrees.

The names of the honor students are listed below.



List of graduates with honors SY2002-2003

| NAME OF STUDENTS | DEGREE | HONOR |
|-------------------------|--|-----------|
| AGTULAO, Bona C. | Bachelor of Elementary Education | Cum Laude |
| ALBIS, Agustina B. | Bachelor of Elementary Education | Cum Laude |
| ALLAY, Brenda B. | Bachelor of Secondary Education | Cum Laude |
| ALLIG, Blessilda D. | Bachelor of Secondary Education | Cum Laude |
| AMPAGUEY, Margarette P. | Bachelor of Elementary Education | Cum Laude |
| BANDA-AY, Gennie B. | Bachelor of Science in Agriculture | Cum Laude |
| BINAY-AN, Jennilyn A. | Bachelor of Secondary Education | Cum Laude |
| BOLIDE, Lily Ann B. | Bachelor of Elementary Education | Cum Laude |
| BOTILAS, Maksim A. | Bachelor of Secondary Education | Cum Laude |
| CALUZA, Irenia L. | Bachelor of Elementary Education | Cum Laude |
| CAROPE, Agustina L. | Bachelor of Secondary Education | Cum Laude |
| CAYAT, Elena B. | Bachelor of Science in Home Economics | Cum Laude |
| FELIX, Rubelyn B. | Bachelor of Science Agricultural Education | Cum Laude |
| GAMBOA, Juliet S. | Bachelor of Science Agricultural Education | Cum Laude |
| IBAAN, Jocelyn C. | Bachelor of Secondary Education | Cum Laude |
| KIAT, Dionisia L. | Bachelor of Secondary Education | Cum Laude |
| LIGLIGEN, Jennifer G. | Bachelor of Elementary Education | Cum Laude |
| LISTINO, Betty C. | Bachelor of Science in Development Communication | Cum Laude |
| MACARIO, Jennifer F. | Bachelor of Secondary Education | Cum Laude |
| MANGAPAN, Jemma Rose P. | Bachelor of Science in Agriculture | Cum Laude |
| MAY-OS, Jineline B. | Bachelor of Elementary Education | Cum Laude |
| PALAEZ, Ferlyn B. | Bachelor of Elementary Education | Cum Laude |
| SUAKING, Febrona B. | Bachelor of Science Agricultural Education | Cum Laude |
| SUBNA-EN, Jo-anne B. | Bachelor of Science in Home Economics | Cum Laude |
| TIBAO, Normalyn Y. | Bachelor of Science in Agribusiness | Cum Laude |

Performance In Licensure/Board Examination

In most of the licensure and board examinations, the University surpassed the national passing percentage. In the licensure examination for veterinarians, Paul T. Fronda and Val F. Felizardo placed

6th and 9th, respectively. The University ranked 4th in the board examination for Librarians in 2003. In like manner, BSU ranked 5th in the licensure examination for Agriculture.

Performance in licensure examination

| PROFESSION | NO. OF EXAMINEES | DATE OF EXAMINATION | NO. OF PASSERS | BSU PASSING, % | NATIONAL PASSING, % |
|----------------------------------|------------------|---------------------|----------------|----------------|---------------------|
| Licensure Exam for Agriculturist | 180 | July 17, 2003 | 53 | 29.80 | 21.00 |
| Agricultural Engineer | 20 | July 2003 | 7 | 35.00 | 38.00 |
| Teacher – Elem (HE) | 39 | Aug. 31, 2003 | 25 | 64.10 | 26.23 |
| Teacher - Sec (HE) | 38 | Aug. 31, 2003 | 16 | 42.10 | 26.26 |
| Nutritionist | 21 | Jul 14-15, 2003 | 7 | 33.30 | 50.00 |
| Forester Licensure Examination | 70 | June 2003 | 23 | 32.86 | 33.61 |
| Veterinarian | 31 | Jul 30-31,2003 | 14 | 45.16 | 31.00 |
| Nursing | 34 | Jun 2003 | 19 | 55.10 | 52.76 |
| | 12 | Dec 2003 | 8 | 66.66 | 43.42 |
| Teacher – Elem | | | | 69.65 | 26.23 |
| Teacher – Sec | | | | 53.10 | 33.80 |

Student Scholarship

Student scholarship is under the auspices of the Office of Student Affairs. For the the first semester, a total of 934 students, which comprise 15.27% of the total population, enrolled in the various undergraduate degree programs. They

enjoyed various scholarship and grants from either government or private agencies or individuals. In the second semester, the number of students declined by 563. The greatest decline is on the number of SK/DILG dependents, from 545 to 116.

Student scholarships and the number of students that avail of the scholarships

| SCHOLARSHIP | NUMBER OF STUDENTS | |
|---|--------------------------|--------------------------|
| | 1 st Semester | 2 nd Semester |
| Government/National Scholarship and Grants | | |
| Department of Science and Technology | 3 | 4 |
| State Scholarship Program | 10 | 11 |
| National Integration Study Grant Program | 18 | 26 |
| Selected Ethnic Group Education Assistance Program | 20 | 23 |
| Special Study Grant Program | 0 | 1 |
| Sen. Juan Flavier Scholarship | 0 | 3 |
| Se. Teresa A. Oreta Scholarship | 0 | 7 |
| La Trinidad Scholarship | 0 | 3 |
| Dept. of Agrarian Reform Scholarship | 0 | 18 |
| GSIS Educational Plan | 3 | 3 |
| Phil. Agriculture & Resources Research Foundation, Inc. | 1 | 2 |
| Subtotal | 55 | 101 |

Private Sponsored

| | | |
|--|-----------|-----------|
| Zonta Club of Baguio | 3 | 12 |
| Phil-Am Aggies Association USA | 2 | 0 |
| Children's Christian Fund | 3 | 0 |
| Romero-Gil Foundation | 2 | 2 |
| Syngenta Foundation, Inc. | 0 | 18 |
| San Isidro de Labrador Scholarship Grant | 0 | 5 |
| Subtotal | 10 | 37 |

Institutional

| | | |
|-----------------------------------|------------|------------|
| Academic | 41 | 76 |
| Entrance | 35 | 0 |
| Supreme Student Council Officers- | 0 | 4 |
| Mt. Collegian Staff | 5 | 7 |
| ROTC Officers | 15 | 12 |
| ATHLETICS/Combative Sports | 78 | 69 |
| GLEE CLUB | 28 | 24 |
| RONDALLA | 16 | 13 |
| Higland Dance Troupe/Kontad | 0 | 12 |
| Dance Troupe | 17 | 14 |
| Dramatics | 24 | 26 |
| Band | 1 | 0 |
| Employee Dependents | 64 | 52 |
| SK/DILG Dependents | 545 | 116 |
| Subtotal | 869 | 425 |

| | | |
|--------------------|------------|------------|
| GRAND TOTAL | 934 | 563 |
|--------------------|------------|------------|

Student Awards

Student awards from international and national competitions

- Best Paper (Junior Category), awarded by the Philippine Society of Soil Science and Technology to Cirilo A. Lagman, BSA Soil Science Major
- Presidential Youth Fellow, awarded to Betty C. Listino, BSDC
- Ten Outstanding Students of CAR (TOS-CAR) awarded to Brenda B. Allay, BSE and Betty C. Listino, BSDC
- 7th Place in Ten Accomplished Youth Organizations (TAYO) in the Philippines, awarded by the National Youth Commission and Jaycees to the Rodeo Club, DVM
- 1st Runner up, Rodeo Competition, garnered by the Highland Cowboys/girls, DVM
- 2nd Runner up, Rodeo Competition, won by the Highland Cowboys and girls, DVM
- Bronze Medal, World Muaythai Championship, won by Jennifer Laguiland
- Bronze Medal, SEA Games, Hanoi Vietnam, won by Jennifer Laguilang
- Gold Medal, Mushu-Sanshu, SEA Games, Hanoi, Vietnam, won by Dolly Andres
- 5th Place National Milo Marathon (Nov, 2003), won by Marichiel Mlnas



Student Organizations

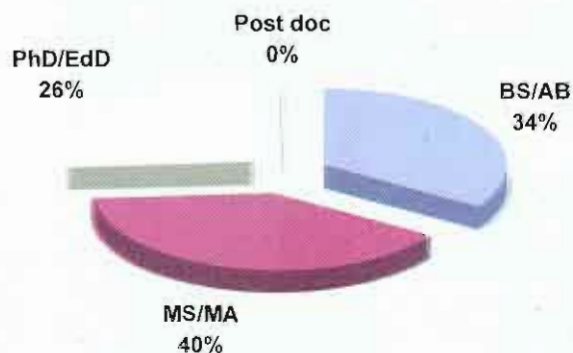
The Office of Student Affairs is tasked to facilitate students' growth and development outside the classroom through its proactive development activities and enhanced student services. Under the student affairs are 71 registered students organizations in the University classified into four mandated organizations: 38 college-based (or affiliated) organizations and 29 religious, athletic and other non-affiliated organizations. In 2003, five student organizations registered but are still on probationary status. These organizations include two non-affiliated organizations (Emissary and Progressive Igorots for Social Action), two religious organizations (Cordillera Crusaders' Society and Inter-Varsity Christian Fellowship), one athletic organization (Athletics Club) and one affiliated organization (Library Science Association). Student organizations are encouraged to conduct their own activities.



Faculty Development

Student performance reflects the educational quality provided by the University's faculty members. The University has 315 members as of December 2003. Compared to last year, the number of faculty increased by 2 (0.64%). For the faculty, the number of BS/AB degree holders decreased by 3.5% but the number of MS/MA state PhD holders increased by 2.46% and 3.85%, respectively. This change was brought about by a functional faculty development program of the University and the implementation of the policy on hiring, specifically on the educational attainment of tertiary instructors.

The faculty development program of the University includes scholarship grants for higher degree and training and



Distribution of Faculty by Highest Educational Attainment

sabbatical leaves. The list of faculty members who finished their degrees and those studying are listed below.

**Faculty who finished their degrees
in 2003**

- AGALDANG, Jackson L.; CEAT; MS Eng'g and Agri-Chain Management; Larenstein University of Professional Education
- AGLANO, Alma M.; CTE; MA Math; Benguet State University
- ANONGOS, Stanley; CAS; MAEd Social Education; Benguet State University
- BATACLAO, Ronda C.; CAS; MA Filipino as a 2nd Language. Benguet State University
- FANGWA, Penelope P.; CAS; MA Filipino, Benguet State University
- GAMBOA, Imelda K.; CTE; MAEd English, Benguet State University
- PAWID, Harland Gary B.; IPES; MA Physical Education, Benguet State University
- SINGA, Victor P; CTE; MS Agricultural Education; Benguet State University
- BELAO, Lourdes A.; CAS; Ph.D. Language Education; Benguet State University
- GOMEZ, Romeo Jr., A; CAS; Ph.D. Environmental Science; University of the Philippines
- PALAZO, Maribel Z.; CAS; Ph.D. Language Education; Benguet State University
- TAD-AWAN, Belinda A.; CA; Ph.D. Agronomy; Benguet State University

**Faculty granted scholarship, as of
December 2003**

- BANANIA, Norma P.; CHET; MS; Benguet State University; June-October 2003
- TAAG, Gregorio C.; CAS, MS Psychology; Saint Louis University; August 1-31, 2003
- ALFONSO, Gerry M.; CF; Ph.D. Rural Development; Benguet State University; June 2003-2005
- MILAGROSA, Aimee P.; CA; Ph.D. Education; Wageningen University, The Netherlands; March 2003-February 2005)
- PIÑON, Aurora F.; CA; Ph.D. Plant Pathology; University of the Philippines Los Baños; February 1-March 2003; June 1-30, 2003.
- PLADIO, Louisa P.; CAS, Ph.D.; Tsukuba University, Japan; June 2003-May 2004

**Faculty granted Thesis Assistance, as of
December 2003**

- DEPONIO, Christopher P.; CA; MS Horti;
- TAGARINO, Leopoldo N.; CA; MS Agribusiness
- BALAOING, Jose G.; CA; Ph.D. Agronomy
- KUDAN, Silvestre L.; CA; Ph.D. Horticulture
- WALSIYEN, Myrna B.; CA; Ph.D. Animal Science

Faculty on sabbatical and rest and recreation leave privilege as of December 2003

- COTIWAN, Luisa C.; CAS; To write a manual on English; June 2003-May 2004
- MANGAOANG, Julita J.; CN; Recreation leave privilege; July 2003-July 2004
- MERESTELA, Tessie M.; CA; To write a compendium of Undergraduate Thesis for Soil Science and Abstract Bibliography of Researches on Bio and Organic Fertilizers; July 2003-May 2004.
- UNTALAN, Paquito P.; CF; To write a lecture manual "An introduction to Watershed Management"; June 2003 – May 2004.

Faculty who attended international trainings/conferences/workshops

- AOAS, Epifania G.; International Symposia on Food and Nutrition Planning at UP Los Baños; June 24-28, 2003
- BAWANG, Franklin G.; Intensive and Sustainable Vegetable Production System, Israel; Jan 20-Feb 12, 2003
- BAYANGAN, Evelyn; Problem Solving in Management at Seoul, South Korea; Sept 15-26, 2003
- BATANI, Ruth.S.; Expert Seminar on Treaties, Agreements and Constructive Arrangement between States and Indigenous Peoples, Geneva, Switzerland; Dec 15-17,2003
- BELIGAN, Salvacion Z.; Netcourse in STATA, Internet STATA Corporation, Texas; Sept 12-Oct 24, 2003
- CASTRENCE, Anatalia V.; World Small Animal Veterinary Association (WSAVA), Thailand; October 23-27, 2003
- DEGAY, Imelda O.; Food and Nutrition Program Planning and Management at UPLB and Thailand; Oct 2002- Jan 2003
- DOMONDON, Denisa L.; Biodiversity Conservation in Desert Ecosystem at Sede Boker Israel; May 4-30, 2003
- FERNANDO, Sheryl I.; InfoComm Asia 2003 at Suntec City, Singapore; Oct 29-21, 2003
- LUBRICA, Percyveranda A.; Distance Learning, Israel

During the year, some members of the faculty left the portals of the University due to old age and by choice. At the same time new members were recruited to fill in

the positions. The members of faculty who retired are and those who were just hired in 2003 are listed below.

Faculty Retirees

- BASIL, Virginia B. Professor III, CTE, April 1, 2003
- BILANGO, Gregorio G., Associate Prof V, CTE, August 1, 2003
- CAWAON, Florence C., Associate Prof V, CN, September 1, 2003
- PAATAN, Esther B., Asst. Prof IV, CTE, August 1, 2003
- PASCUA, Remedios C., Asst. Prof. IV, CAS, November 1, 2003
- RAMOS, Charito A., Asst. Prof IV, CAS, June 1, 2003
- TUMBAGA, Victoria D., Asst. Prof. IV, CHET, November 1, 2003
- VILLANUEVA, Thelma G. Associate Prof IV, CAS, November 1, 2003

New Faculty Recruits

- SAGALLA, Esther Josephine D.; Instructor CA; BSA Agronomy; January 15, 2003

Accreditation

The College of Teacher Education submitted its doctorate and master programs for the Preliminary Survey to the AACUP last January 20-24,2003, It was subsequently granted a candidate status. Specifically, the degrees included were PhD

in Agricultural Education and Educational Management, MS in Agricultural Education, and MA Education in Administration and Supervision, Elementary Education and Guidance and Counseling.

| Current BSU Accreditation Status by Programs by Accrediting Agency of Chartered Colleges and Universities in the Philippines (AACUP) | | | | |
|---|---|---|---|---------------------|
| COLLEGE | PROGRAMS/ LEVEL | TYPE AND DATE OF SURVEY | VALIDITY OF THE LAST ACCREDITATION | STATUS |
| College of Agriculture | BSA (all majors) BSAB Level II | 1 st Resurvey, March 1999 | March 14, 1999 - March 13, 2004 | Reaccredited |
| College of Arts and Science | BS Applied Statistics Level II | 2 nd Resurvey, Jan 22-24, 2003 | Dec. 11, 2002 - Jan. 2004 | Reaccredited |
| College of Agric'l Engineering | BS Agric'l Eng'g Level II | 1 st Resurvey, Jan. 20-22,2003 | Jan. 7, 2002 – July 2004 | Reaccredited |
| College of Forestry | BS Forestry Level II | 1 st Resurvey, Jan. 23-25, 2003 | Jan, 7, 2002 – July 2004 | Reaccredited |
| College of Home Economics and Technology | BS Nutrition Level II | 1 st Resurvey, Jan. 23-25, 2003 | March 4, 1001 – March 13, 2006 | Reaccredited |
| College of Nursing | BS Nursing Level II | 1 st Resurvey, Nov. 1999 | Nov. 18, 1999 – Nov. 17, 2004 | Reaccredited |
| College of Teacher Education | B in Elem. Educ. B in Sec. Educ. BS Agric'l Educ Level II | 1 st Resurvey, Nov. 1999 | Nov. 18, 1999 – Nov. 17, 2004 | Reaccredited |
| College of Veterinary Medicine | Doctor of Vet Med Level II TPAE* – 86% Compliance | 1 st Resurvey Nov. 1999 | March 14, 1999 – March 14, 2004 | Reaccredited |
| Graduate School | MS (all majors field in Agriculture) Level II MS Resource Mgmt Level II Ph.D. Horti/RD Level II | 1 st Resurvey, Dec. 6-8, 2001 | Jan 2002 – Jan 2006 | Reaccredited |
| | MAEd/Ph.D. Educ Mgmt. MSAE/Ph.D. Agric. Educ. | Preliminary Jan 23-25, 2003 | Feb 1, 2003 – Jan 31, 2005 | Candidate Status |

*TPAE – Technical Panel for Agricultural Education

University Health Services

Highlights of accomplishments

- ✓ The medical-dental staff of the University was given subsistence and laundry allowances as early as January, as granted by the Magna Carta for public health workers who were disallowed by the Commission on Audit of such benefit in April 2002.
- ✓ The University hired a new dentist in July. The newly hired dentist immediately performed the dental or oral examination of students.
- ✓ The mini laboratory clinic of the medical clinic was revived in August when a faculty medical technologist was assigned to do part time job at the health unit. Routine laboratory tests such as CBC, urinalysis, Fecalysis, hemoglobin determination, blood sugar test and pregnancy test can now be done at the school clinic.
- ✓ The budgetary allocation for additional supplies and equipment for the medical-dental clinic was increased

this year. To further beef up the much-needed supplies, medical-dental fees would be increased by next school year.

- ✓ The University has continuously received outreach services from other agencies both public and private. Late in the year the medical clinic allied itself with the Sagip Mata program of the government. A representative from the said project came to the University to offer free eye check up to students and personnel.
- ✓ The free clinic of Dr. Victor G. Dumaguing visited the University four times last year. The project, a part of the BAWAS TABA DAGDAG GINHAWA program of a non-government agency, offers free consultation as well as free laboratory test such as electrocardiography or ECG, cholesterol and blood sugar determination as well as body mass index analysis.

University Registrar

Highlights of accomplishments

- ✓ The first Operations and Systems Manual for the Office of the University Registrar, which was approved by the University Administrative Council, was prepared.
- ✓ The staff members were reassigned based on their capability and item in the University.
- ✓ Forms needed in the office were reviewed, revised and completed.

- ✓ The first comprehensive University Academic Calendar was reviewed and prepared.
- ✓ "Lakbay Aral" for the staff was conducted.
- ✓ Enrollment procedure was reviewed and improved.
- ✓ Training needs were identified and staff retooled.

- ✓ Encoded admission matters in BSU website thus admission and related matters can be accessed thru internet.
- ✓ The first staff member was endorsed to go on study leave with pay.
- ✓ The University Academic Catalogue was started.
- ✓ Policies on admission, retention and related matters were reviewed.

University Library Services

Salient accomplishment in 2003

- ✓ Emphasis was put on the in-depth information literacy program for all faculty, staff and students in the University. Starting 2nd semester 2003, a lecture was scheduled for faculty on the use of electronic resources, internet, and other on-line resources. This is a continuing program, until all the library users become aware of what the library can offer them in terms of electronic resources.
- ✓ With the change of leadership, the University plans were thoroughly reviewed thru a strategic planning workshop conducted towards the 3rd and 4th quarter of 2003. Hence, the library development plans were also revised.
- ✓ The BSU mini-archive and president's memorabilia where important university documents are indexed and housed were launched. Profiles of the three last presidents (Dr. Fortunato Battad, Dr. Lucio Victor, and Dr. Cipriano Consolacion) were displayed with their corresponding accomplishments. Together with these resources are the local history collections in the Cordillera region.
- ✓ A formal MOA was signed with the Library Link as partners in the sharing of Filipiniana resources and with Phil. Agrinet for the sharing of all agricultural resources.
- ✓ Awarded a *Cirilo B Perez Award* during the National Book Week Celebration by the Philippine Librarians Association.
- ✓ Acquired were: 699 books titles (559 purchases and 140 donated); 73 titles of periodicals - 73 titles (20 were subscription, 20 gifts and 13 exchange) and two electronic titles.

Open University

Vision:

To provide quality education and training accessible to all using both non-formal and formal learning system independent and out-of-school youth programs particularly those that respond to community needs.

Mission:

The Benguet State University Open University is committed to offer courses to relevant education in both degree and non-degree programs with strong focus on entrepreneurship.

Goals and Objectives:

- ❖ To offer non-traditional schemes of providing quality education that supports entrepreneurship and socio-economic development.
- ❖ To institutionalize a system of sustaining a community-based continuing education program supporting human resource development.
- ❖ To evolve a model of community-based kind of distance education that maximizes the full utilization of local resources in partnership with various agencies, institutions and organizations.
- ❖ To strengthen and compliment the formal curricular offerings of the university and to operationalize non-formal education agenda of academic institutions.
- ❖ To recognize and award equivalencies of courses for individuals with acquired skills, which may accrue to a higher or equivalent degree.

Curricular Program:

- Master in Urban Management
- Master in Human Resource Development
- Master in Nonformal Education
- Master in Community Development
- Master in Development Communication
- Master in Cooperative Management
- Diploma in Urban Management
- Diploma in Training Management

Enrolment and graduates in the different degree program of the Open University

| DEGREE COURSE | ENROLMENT | | GRADUATES |
|--|-------------|------------|-----------|
| | 2002 - 2003 | 2003 -2004 | 2003 |
| Master in Community Development | 64 | 51 | 3 |
| Master in Human Resource Development | 53 | 62 | 6 |
| Master in Development Communication | 17 | 33 | 2 |
| Master in Cooperative Management | 29 | 25 | - |
| Master in Non-Formal Education | 21 | 28 | 1 |
| Diploma and Master in Urban Management | 12 | 25 | 2 |
| Diploma in Training Management | 29 | 25 | 3 |
| TOTAL | 225 | 248 | 17 |

Highlights of Accomplishments

- The BSU Open University Distance Education program continues to provide access to higher education. The students come from the far-flung areas of Apayao, Kalinga, Ifugao, Benguet, Mountain Province, Nueva Ecija, Nueva Viscaya, La Union, Ilocos Province, Bulacan and Laoag City.
- For the five master's degree and two diploma courses 248 enrolled and 17 graduated last March 2003.
- The brochures of the courses offered in both the degree program and diploma courses were updated. The description of each degree and each course under each degree was given its proper scope to guide instructors and students on the expected knowledge, skills and attitudes to be derived from taking the course.
- The policies and operational guidelines were prepared and finalized.
- Records of students were updated to conform with present guidelines from the Office of University Registrar.
- Faculty updating on Open University Distance Education policies from CHED were conducted through two seminars, which were attended by the Graduate School Dean, and College Secretary, and the Executive Coordinator of BSU Open University.
- A new computer was acquired and its supplies adequately provided from the Trust Fund.

Center of Excellence in Agriculture Education

Benguet State University is one of only six Centers of Excellence in Agriculture Education identified by the Commission on Higher Education across the country. The Center of Excellence status is in recognition of the strengths and potentials of an institution or a sector in the institution in terms of faculty, facilities and curricular programs.

Almost 75% of the amount has already been used in the different components most especially for the upgrading of facilities and conference attendance. Faculty members from the College of Agriculture and other colleges as well have availed themselves of COE funding support in conference attendance.

Components of the COE project and their allocation

| COMPONENT | ALLOCATION |
|--|-------------------|
| Faculty & Staff Development | P 267,000 |
| Upgrading of Facilities | 1,623,000 |
| Upgrading of Library Holdings & Facilities | 175,000 |
| Curricular Development | 90,000 |
| Faculty Exchange | 60,000 |
| Professorial Chair & Outstanding Teacher Award | 36,000 |
| Production of Teaching Materials | 200,000 |
| Research Awards (faculty & student) | 90,000 |
| Publication Incentives | 45,000 |
| Paper Presentation & Conference Attendance | 240,000 |
| Contingency | 150,000 |
| TOTAL | P3,000,000 |

RESEARCH, DEVELOPMENT AND EXTENSION

The year 2003 was marked with awards for achievements as well as significant and relevant initiatives in research, development, and extension.

The significant technologies and information generated were offshoots of continuing research, development and extension activities of the University. They relate to crop improvement, crop management, crop protection, postharvest, marketing, animal production and policy studies.

During this year, a sweetpotato variety, named *BSU SPO2* or 'Bengueta', was released for dissemination. This variety performs well both under highland and lowland conditions and has good processing qualities. Seven organisms were developed and ready for piloting as bio-control for chrysanthemum diseases. Promising varieties of potato and garden pea were identified to be resistant to leafminer and other diseases. Varietal/clones selections of potato and yam, with potentials of processing and disease resistance, were maintained.

Extension activities were aired through a regular radio program, Research and extension personnel and some faculty members of the different colleges in the University aired a wide array of topics such as crops and live stock production, food processing, and

health issues like nutrition and management of human diseases, disaster management and preparation.

Training and outreach programs focused on crop production, postharvest/ processing and marketing. Furthermore, on-field participatory researches with farmers/ cooperators

The BSU Research Journal, RANGTAY and the RDE Forum, a new publication, that features scientific papers (lectures presented/delivered in conferences, conventions and seminar-workshops), were published during the year.

Other technical printed materials were produced in popular form. Instructional Educational and Communication (IEC) materials such as leaflets, pamphlets, and posters were widely distributed to various clientele.

To provide continuing education to the RDE personnel, staff members were sent to different local, national, and international training courses, seminars and workshops.

The University's RDE programs were greatly enhanced through partnership and institutional linkages with local, national and international government and non-government agencies/organizations.

Technologies/ Significant Information Generated

From the completed and on-going research and development activities, the following information were generated as of the year 2003.

A. Crop Improvement

1. Northern Philippine Rootcrops Research and Training Center found that 30 potato varieties/ clones have potentials for processing and are disease resistant. Of these varieties five are maintained in in-vitro, 30 are being evaluated for stem cutting production, 27 are being evaluated on yield trials, and seven are in advance yield trials.



2. *IP80047* and *13.8.1* are promising potato clones. They are moderately resistant to late blight and leafminer, and have higher tuber yield and higher dry matter content as compared to Granola and Igorota.



3. For open field seed production of potato, the pea-sized Generation 0 (GO) tubers of Igorota variety produced bigger and more number of Generation 1 (G1) seed tubers than Granola.
4. On sweetpotato varieties/entries, 155 were maintained (ex-situ) in the field and laboratory; 10 in the in-vitro; 20 were evaluated under the National Cooperative Testing (NCT) trials and 35 are under drought tolerance trials. Ten were under mass propagated for processing and product innovation trials.
5. The *BSU SPO2* sweetpotato variety, named 'Bengueta', was approved by the National Seed Industry Council (NSIC) for national release.
6. Three sweetpotato entries, Tagalog, Comiles and PSBSP-17, have high yields under high-land conditions.
7. The application of 14-14-14 + chicken manure and alnus compost significantly increased the yield of Arabica coffee berries to as high as 4.97 kilograms per tree.



- Vegetable diseases were documented on colored photographs. The symptoms were described and the causal organisms identified. With this compendium, farmers can immediately determine the disease attacking their crops, and thus, institute the appropriate management measure.

C. Crop Protection

- Two bacterial antagonists, *Fallobacterium sp.* and *Pseudomonas sp.*, and one fungal hyperparasites, *Verticillium sp.*, are ready for piloting as bio-control for chrysanthemum diseases in farmers' field.
- On garden pea, cultivar *Melting Sugar* showed a degree of resistance to leafminer. Trigard 75 WP and Dimotrin 30 SC were effective in controlling leafminer. Yellow sticky trap and intercropping "Kutsai" with garden pea can also reduce leafminer infestation.
- Trichoderma as biocontrol agent minimizes clubroot severity of cabbage by suppressing the growth of *Plasmodiophora brassicae*. It increases yield when combined with lime. As compost activator it increases soil pH and enhances nutrient uptake.



- Five potential biological control species for vegetable diseases were isolated and identified. These are: *Bacillus*, *Penicillium*, *Pseudomonas*, *Trichoderma* and *Paecilomyces*.

- The insect pests initially identified to be associated with coffee Arabica and Excelsa in the Cordillera were leafminers, scale insects, chryso melid larvae, lycanid larvae, twig/stem borer, berry borer and psocoptera.



- Fungicides Daconil 2787 and Dithane M45 were less toxic to *Diadegma*, a biocontrol for diamond back-moth in cabbage production.
- The municipalities of Kibungan, Bakun, Buguias, Kabayan, Kibungan and Mankayan were identified as chayote growing areas in Benguet. The municipality of Kibungan had the widest area, highest production and gross sale. The incidence of chayote mosaic *tymovirus* ranged from low-mild to mild-moderate in the municipalities of Bakun, Buguias, Kabayan, Kibungan and Mankayan. The infection of *tymovirus* greatly reduced vine length and yield of chayote.

D. Postharvest, Processing and Marketing

- Haponica*, a yam variety, was found suitable for yam 'haleya' delicacy and for wine making.
- A total of 1-2% of anthocyanin can be recovered from the processing waste of yam (peelings and cooking water). Anthocyanin is used for food coloring and dye.
- A total of 20-50% loss in yam was documented to be the result of injuries, bruises, diseases and weight loss during post-harvest handling and processing.
- Six tons of yam powder was produced from the pilot commercial yam processing; two tons were disposed for promotional sales and chemical analysis; and the remaining four tons were used for storage trials and product development. Proceeds were remitted to the financier (TAEONE, A Korean investor) as part of the development cost recovery. The promotional sales indicated that the product is acceptable to the market; however, there is a need to secure Bureau of Food and Drug permit for commercialization.
- Post-harvest loss could be as high as 12% in cabbage and 'wongbok' as documented from farmers' field to the Vegetable Trading Post in La Trinidad, Benguet.
- Cabbages and beans have a shelf-life of five days under ambient conditions. Refrigeration prolongs harvest quality up to 12 days.

E. Animal Production

1. Rabbit production in the animal production component of the agroforestry farming system has a great potential. This system entails less commercial feeds in maintaining rabbits. Grasses and succulent weeds are available as feed supplement. This was observed on the case of ten female rabbits (New Zealand White) and two male rabbits (New Zealand White and Chinchilla) raised at the Livestock R and D Farm at the Ampasit Agroforestry Project.



2. Non-pathogen streptococci, s. *dysgalactiae*, and *Enterococcus faecalis* were isolated. Isolation of *E. faecalis* indicates fecal contamination of carcass probably during handling or from dust contamination of carcasses. *E. faecalis* can cause endocarditis and wound infection in man but not in pigs. Streptococci *dysgalactiae* were sensitive to Penicillin G, Ampicillin and Tetracyclines. These antibiotics are therefore recommended for the treatment and control of infections in animals.
3. Samples of mesenteric lymph nodes from pigs slaughtered and/or sold in Benguet and Ba-

guio were examined for the presence of *Salmonella*. Twelve out of 120 samples were found *Salmonella* positive. Being potentially pathogenic to man *Salmonella* should be absent in any meat product.

F. Silkworm Project

- In silkworm trials, 240,000 third instars of bivoltine purebred silkworm larvae (J102 and C102) were reared in 12 boxes. All these silkworm strains exhibit quality performance in relation to cocoon and silk characteristics.



- The mulberry production farm was expanded from 1.5 hectares to 2.5 hectares. The dominant mulberry varieties planted were Batac and Alfonso. A 1,000 square meter germplasm collection area is being maintained for

the different mulberry collections: Kurang, King, S-54, Hakikalu, Brazil, Taiwan and other Japanese, Korean and Chinese mulberry varieties.

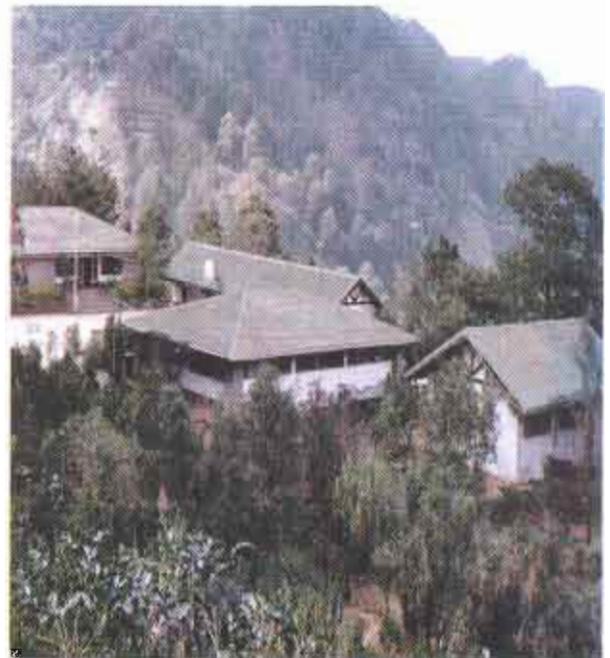


La Trinidad, Benguet. It was envisioned that the centrum would showcase the following: bambusetum, butterfly farm, garden of pine and indigenous trees, organic farms, animal farms, aviary, apiary, techno park, and other recreational areas.

The proposed "BSU Natures Park" was evaluated for its socio-economic value. It was also evaluated for its potential as a tourist destination and for its economic returns. It was estimated that proposed park could generate as much as P2,108,693,560 based on survey of potential tourists/visitors.

G. Social Researches

1. **Technology Syntheses on Rice.** On Rice Key Commodity Systems (KCS) the best component of rice practices and technologies have been synthesized in the provinces of Benguet, Kalinga and Mt. Province. The synthesized rice-based KCS for Ifugao Province were packaged. On farm and on enterprise trials of synthesized rice-based KCS technologies for the low, medium, and high elevation ecological zones have been established in Ifugao province. Farmers' Field Schools (FFS) were held particularly in the municipalities of Lamut, Kiangan, Banaue, and Lagawe. FFS were mobilized in Alfonso Lista and Lamut.
2. **Biodiversity Centrum.** A biodiversity centrum was proposed to be located on a 35 hectare forested area in Ampasit, Wangal,



3. **Vegetable Importation.** The study, entitled "*Perceived Effects of Vegetable Importation on Cordillera Vegetable Farming*" was conducted to find out the effects of open vegetable importation on farming activities in the Cordillera. Over 600 farmers from selected vegetable growing areas of Benguet and Mt. Province,

Cordillera Administrative Region (CAR) were the respondents. Eighty percent of the respondents perceived that the cause of low prices of vegetables is the presence of imported vegetables and 20.7% of the respondents perceived that middlemen and/ or buyers/traders took advantage of the importation issue by lowering the price/kilogram of local vegetables.



Programs/projects implemented

In the year under review, different researches were undertaken by the four research centers and institutes of the University. Some outside funded developmental projects were classified under the special projects and other basic and social researches under the College-based projects. Most of the programs/projects have a duration of five or more years; however, partial and initial results were reflected on the significant information generated.



| TITLE | DATE | | BUDGET | FUND SOURCE/S | OTHER AGENCIES INVOLVED |
|--|-----------|-----------|------------------------|--|-------------------------|
| | Start | End | | | |
| Horticultural Research and Training Institute (HORTI) | | | | | |
| Tissue Culture Research and Development Program for Highland Crops | 1995 | 2005 | 2,046,880 1,200,000 | BSU PIUC | LGUs/SLU/VLIR |
| Integrated Pest Management (IPM) on Selected Vegetable Crops | 1998 | 2005 | 2,260,608 | BSU | BPI/LGUs |
| Strawberry Varietal Development Program | 1998 | 2005 | 1,483,454 260,344 | BSU Builder Rural Bank | LGUs |
| Collection, Introduction of New Varieties of Roses under Benguet Condition | 2001 | 2004 | 782,072 | BSU | LGUs |
| Chayote Research and Development Project Study Titles: • Chayote Growing in Benguet Province • Effect of Chayote Mosaic Tymovirus (CMTV) on the Growth and Yield of Chayote | 1999 | 2004 | 1,819,284 290,000 | BSU DA-BAR | UPLB |
| Development of Market-Oriented Cropping Schemes for Vegetable Crops Study Titles: • Vegetable Succession Cropping Schemes • Off-season Vegetable Cultivation | 1996 | 2004 | 3,386,052 | BSU | DA LGUs |
| Postharvest Handling, Processing and Product Development of Highland Vegetables | 2001 | 2005 | 1,275,335 | BSU | LGUs |
| Cordillera Indigenous Mushroom and Truffles | 2001 | 2004 | 491,256 | BSU | LGUs |
| Stress Management in Sub-tropical Vegetable Crop Cultivation | 2003 | 2007 | 1,896,140 | BSU | LGUs |
| Fungal Hyperparasites and Bacterial Antagonists as Component of Integrated Disease Management Program for Chrysanthemum White Rust | Oct. 1999 | Jan. 2004 | 1,826,528 | DA-BAR | LGUs UPLB |
| Biological Control of major Soil-borne Diseases Affecting Selected Highland Crops Using Bacterial and Fungal Antagonists and Plant Extracts | 2001 | 2003 | 600,000 | DA-BAR | LGUs |
| Program Title: Biological Control of Phytophagous Mites and Aphids in Selected Crops in the Cordillera Project title: Establishment of mass Rearing Center on Predatory Mites to Manage Mite Pests on Strawberry and Roses | 1999 | 2005 | 588,000 700,000 | DA-CARFU (CO) LGU, La Trinidad | LGUs |
| Varietal Improvement of Highland Vegetable Crops Study 1 Development and Piloting of Improved Varieties of Garden Pea Study 2 Development and Evaluation of Snap Bean (<i>Phaseolus vulgaris</i>) Cultivars for the Philippine Highlands Study 3 Tomato Hybrid Development and Seed Increase Study 4 Pepper Hybridization Study 5 Zucchini Hybridization Study 6 Squash Varietal Improvement | 1999 | 2004 | 436,303 | UPLB-IPB | DA-BAR |

| TITLE | DATE | | BUDGET | FUND SOURCE/S | OTHER AGENCIES INVOLVED |
|---|-----------|-----------|-----------|---------------|-----------------------------------|
| | Start | End | | | |
| Establishment of Mass Rearing Center on Predatory Mites to Manage Mite Pests on Strawberry, Roses and other High Value Crops | Aug. 2001 | July 2004 | 2,400,416 | DA-CAR | LGU, La Trinidad |
| Survey and Identification of Soil-borne Plant pathogen in Mt. Province | Oct. 2001 | 2003 | 503,000 | CHARMP | DA-CAR |
| Diseases of Vegetable Crops with Economic Importance in the Cordillera: A Compendium | Oct. 2001 | 2003 | 518,600 | CHARMP | DA-CAR |
| Integrated Highland Farming Systems and Agroforestry (IHFSA) | | | | | |
| Program 1. Ten Year Arabica Coffee Rehabilitation Program in the Cordillera | 1999 | 2009 | | | DA-CAR Farmer partners LGUs |
| Project 1. Production Technology Improvement of Arabica Coffee in CAR | 1999 | 2009 | 4,283,370 | BSU | DA-CAR Farmer partners LGUs |
| Study 1 Performance of Arabica Coffee under Different Rejuvenation Techniques | | | | | |
| Study 2 Evaluation of Different no. of Vertical Shoots on Bended Old Arabica Coffee Trees for Maximum Yield | | | | | |
| Study 3 Collection, Selection, Evaluation and Multiplication of Arabica Coffee Strains | | | | | |
| Study 4 Integration of Beekeeping in Coffee-Based Farming System | | | | | |
| Project 2 Crop Protection Studies on Arabica Coffee | 2003 | 2009 | 1,818,468 | BSU | LGUs Farmers |
| Study 1 Survey and Identification of Arabica Coffee Diseases | | | | | |
| Study 2 Influence of Cropping Systems on the incidence of Arabica Coffee Diseases | | | | | |
| Study 3 Fungicidal Screening Against Major Fungus Diseases of Arabica Coffee | | | | | |
| Study 4 Management of Postharvest Diseases of Arabica Coffee | | | | | |
| Study 5 Survey and Identification of Insect Pests Attacking Arabica Coffee | | | | | |
| Study 6 Screening of Insecticides Against Major Insect Pests of Arabica Coffee | | | | | |
| Study 7 Survey and Identification of Weeds Associated with Arabica Coffee | | | | | |
| Study 8 Screening of Herbicides on Weeds Associated with Arabica Coffee | | | | | |
| Project 3. Soil Management and Fertilizer Studies for Arabica Coffee Production | 2002 | 2009 | 2,403,736 | BSU | Farmer partners LGUs |
| Study 1 Response of Arabica to Different Organic Fertilizers Subjected to Rejuvenation through Bending in a Coffee-pine Agro- forestry System | | | | | |
| Study 2 Response of Arabica Coffee to Different Organic Fertilizers Subjected to Rejuvenation through Topping | | | | | |

| TITLE | DATE | | BUDGET | FUND SOURCE/S | OTHER AGENCIES INVOLVED |
|---|-------|------|-----------|---------------|-------------------------|
| | Start | End | | | |
| in a Coffee-pine Agroforestry System | | | | | |
| Study 3 Effect of Inorganic and Organic Fertilizer Formulations on the Growth and Yield of Arabica Coffee | | | | | |
| Study 4 Response of Arabica Coffee to Selected Micronutrients and Foliar Fertilizers | | | | | |
| Study 5 Integrated Plant Nutrition Management System for Organic Arabica Coffee Production | | | | | |
| Project II. Integration/Evaluation of Livestock and poultry for Agroforestry System in the Highlands | 1999 | 2005 | 2,040,618 | BSU | DA LGUs |
| Study 1 Rabbit Production as Component of Agro- forestry | | | | | |
| Study 2 Native and Hybrid Chicken as Component of Agroforestry | | | | | |
| Study 3 Geese Production as Component of Agro- forestry | | | | | |
| Study 4 Turkey Production as Component of Agroforestry | | | | | |
| Project III. Isolation and Antibiotic Sensitivity Testing Of pathogenic Microorganisms of Swine | 2000 | 2003 | 500,364 | BSU | NMC LGUs |
| Study 2 Isolation of Salmonella in Swine | | | | | |
| Study 4 Pathogenicity Testing of Salmonella Isolates | | | | | |
| Project IV. Management of Diseases in Organically -Grown Vegetables | 2000 | 2003 | 1,435,288 | BSU | BIOTECH |
| Study 1 Isolation and Identification of Potential Antagonists from Various Compost and Rhizosphere Soil | | | | | |
| Study 2 Greenhouse Evaluation of Bacterial Isolate and Trichoderma Strain KA against Clubroot in Cabbage | | | | | |
| Study 3 Field Evaluation of Trichoderma Against Clubroot in Cabbage | | | | | |
| Project V. Highland Pig Conservation and Development Project | 2003 | 2007 | 1,941,060 | BSU | DA LGUs |
| Study 1 Establishment of native Pig Nucleus Herd | | | | | |
| Study 2 Breeding for Cordillera Highland Pig | | | | | |
| Study 3 Multiplication and Distribution of CHIP Strain | | | | | |
| Project VI. Indigenous Knowledge on Animal Health and Production in the Highlands | 2003 | 2005 | 1,398,321 | BSU | DA |
| Study 1 Local Knowledge Systems on Swine Health and production | | | | | |
| Study 2 Local Knowledge Systems on Ruminant Health and Production | | | | | |
| Study 3 Local Knowledge Systems on Poultry Health and production | | | | | |
| Study 4 Establishment of Medicinal Plants Garden | | | | | |

| TITLE | DATE | | BUDGET | FUND SOURCE/S | OTHER AGENCIES INVOLVED |
|---|------------|------------|------------------------|-----------------------|--|
| | Start | End | | | |
| Institute of Social Research and Development (ISRD) | | | | | |
| Community Agriculture-based Livelihood Enhancement (CABLE) Program Study Title: Socio-economic Survey of Pudong, Kapangan, Benguet | 2003 | 2004 | 1,219,586 50,000 | BSU PIUC | LGUs Farmer Cooperatives |
| Perceived Effects of Vegetable Importation to Cordillera Vegetable Farming | Jan. 2003 | Dec. 2003 | 86,051 150,000 | BSU PIUC | LGUs DA |
| Assessment of Philippine Agricultural Research Development Extension | Jan. 2003 | March 2003 | 500,221 | JICA | BSU |
| Northern Philippines Root Crops Research and Training Center (NPRCERC) | | | | | |
| I. POTATO RDE | | | | | |
| Improvement of the Potato Seed Production Technology in the Philippines | 2001 | 2004 | 3,000,000 1,460,000 | DA-BAR BSU | NOMIARC LGUs Reg. 10 FarmerCoops |
| Variety improvement for processing and table potatoes in the Philippine highlands | 1995 | 2005 | 1,800,000 | BSU | DA-BAR Farmers |
| Improvement of the Potato Seed Production Technology in the Philippines | April 2001 | March 2004 | 867,100 | DA-BAR | LGUs |
| Strengthening the Potato RDE Network | 2000 | 2005 | 500,000 | DA-BAR | DA PCARRD |
| Contribution of Rootcrop Production, Processing and Consumption to Income and Nutrition of Selected Households and Consumer Groups | 2001 | 2005 | 1,200,000 | NHF | LGUs |
| II. SWEETPOTATO RDE | | | | | |
| Varietal Evaluation of Sweetpotato in the Philippine Highlands | 2000 | 2005 | 292,000 1,900,000 | Philroots BSU | PRCRTC-VisCA UPLB-IPB |
| Sweetpotato Enterprise Development in Partnership with Growers and Processors | 1998 | 2004 | 2,220,000 | BSU | UPWARD |
| Varietal Improvement of Sweetpotato in the Philippines | 1999 | 2004 | 90,900 | VISCA | UPWARD |
| Potato and Sweetpotato Livelihood Project for the Lowlands of Northern Luzon | June 2002 | May 2003 | 286,348 92,417 | CIP- UPWARD LGU | LGUs Farmer Coops |
| Assessing Market Potential of the Sweetpotato Snackfood Products | 2001 | 2003 | 35,000 | NHF | UPWARD |
| Varietal Evaluation of Sweetpotato in the Highlands | 1999 | 2004 | 70,000 | VISCA | LGUs |
| Evaluation of a Participatory Nutrition Promotion Strategy | March 2003 | April 2004 | 600,000 | NHF | LGUs |
| III. YAM RDE | | | | | |
| Project 1. Varietal Evaluation of Yam and Northern Luzon | 2001 | 2006 | 600,000 1,250,000 | TAEONE BSU | Farmer Cooperators PRCRTC-VISCA |
| Project 2. Sustainable Yam Seed Production in CAR | 2002 | 2006 | 1,080,000 | BSU | PRCRTC- VISCA |
| Project 3. Participatory Technology Innovation for Yam Production | 2002 | 2006 | 1,080,000 | BSU | PRCRTC- VISCA |
| Project 4. Development of Appropriate Post- | 2001 | 2004 | 500,000 | TAEONE | PRCRTC- |

| TITLE | DATE | | BUDGET | FUND SOURCE/S | OTHER AGENCIES INVOLVED |
|---|-----------|------------|---|---|---------------------------------------|
| | Start | End | | | |
| harvest Studies in Yam | | | 630,000 | BSU | VISCA |
| Project 5. Product Development on the Use of Yam Flour and Starch | 2003 | 2007 | 500,000 840,000 | TAEONE BSU | PRCRTC- VISCA |
| Development of Highland Yam Industry for Domestic and Export Market | 2001 | 2004 | 1,000,000 | DA Jaeil Export- Import Trading Corp. IFS | PRCRTC- VISCA |
| Varietal Evaluation of Yam in Northern Luzon | 2001 | 2006 | 600,000 | TAEONE | PRCRTC- VISCA |
| Development of Appropriate Post-harvest Studies in Yam | 2001 | 2004 | 500,000 | TAEONE | PRCRTC- VISCA |
| Product Development on the Use of Yam Flour and Starch | 2003 | 2007 | 500,000 | TAEONE | PRCRTC- VISCA |
| Taro Variety and Product Development | 2000 | 2004 | 45,000 | PRCRTC- VisCA | PRCRTC- VISCA |
| IV. ROOTCROP-BASED FARMING SYSTEM RDE | | | | | |
| Project 1. Germplasm Conservation and Maintenance of Rootcrops | 1997 | 2006 | 6,480,000 | BSU | PCARRD |
| Project 2. Integrated Pest Management on Rootcrops | 2003 | 2006 | 660,000 | | Farmer Coops, LGUs |
| Project 3. Integrated Crop, Soil and Water Management on Rootcrop Production | 2003 | 2008 | 1,350,000 | | LGUs |
| Project 4. Product Development of Taro, Cassava and Other Indigenous Rootcrops In Northern Luzon | 2002 | 2005 | 810,000 | | LGUs Farmer Coops |
| Project 5. Contribution of Rootcrop Production, Processing and Consumption to Income and Nutrition of Selected Households and Consumer Groups | 2001 | 2005 | 1,200,000 1,600,000 | NHF BSU | UPWARD |
| SPECIAL PROJECTS | | | | | |
| Rice-based Key Commodity System (KCS) Technology Transfer Start-up Project for the Cordillera | Aug. 1999 | Aug. 2004 | 3,452,610 | DA-BAR | PhilRice |
| Rice Research in Cool Elevated Areas in CAR | 1990 | 2005 | 127,020 | PhilRice | LGUs |
| Comprehensive Irrigation Research and Development Umbrella Program (CIRDUP) | Aug. 1998 | Dec. 2003 | 4,884,170 | DA - CARFU | UPLBFI ,RFU SUC. LGUs |
| The Productivity Improvement and Evaluation of the Agri-tourism Function of the Ifugao Rice Terraces: A Case Study | Aug. 1999 | Sept. 2003 | 50,000 | BSWM | LGUs DA-CAR |
| Towards In-land Aquatic Propagation in Asin (TILAPIA) | Oct. 1998 | Oct. 2003 | 100,571 | BFAR-CAR | BENECO DMMMSU- NLAMRD Farmer |
| Cordillera Highland Integrated Water Resources Management (CHINWAREM) Project | May 2001 | April 2007 | 820,260 50,000 25,000 40,000 28,495 | DOST- PCAMRD CAR-DA BFAR POPCOM- DOST | DA-CAR LGUs |
| Project Benefit Monitoring and Evaluation of the Cordillera Highland Agricultural Resources Management Project (CHARMP) | Jan. 2002 | May 2003 | 1,705,000 | DA- CHARM | ADB |

| TITLE | DATE | | BUDGET | FUND SOURCE/S | OTHER AGENCIES INVOLVED |
|---|-----------|-----------|--------|----------------------|-------------------------|
| | Start | End | | | |
| Efficacy of Cartap 50 SP for the Control of Potato Leafminer | Feb. 2001 | Feb. 2003 | 42,000 | LEADS AGRO Phil Inc. | LGUs BSU |
| COLLEGE BASED-PROJECTS | | | | | COLLEGES |
| Tracer Study of BSU Graduates | | | | | CAS |
| Rabies Prevention and Control in La Trinidad | | | | | CVM |
| Demo-farm in Improving Cucumber Production in Acidic Soil | | | | | CA |
| Reproductive Health Care Program | | | | | CN |
| Compendium of Insect Pests and Diseases | | | | CHARMP-DA | CA |
| Inventory of Ethno Food Processing Technologies in the Cordillera Region | | | | | CHET |
| A Physics Approach to Surface Water Pollution Modeling Using Geographic Information System | | | | | CF |
| Microtechniques in Biological Science | | | | | CAS |
| Use of Pesticides and Fertilizers in Agriculture and Its Implications for Human Health and the Environment in Kapangan, Benguet | | | | | CA |
| Production of Salad Crops Using Varying Rates of Formulated Organic Fertilizer under Protected Environment and Open Field | | | | | CA |
| Gene Banking and Diversity Analysis of Indigenous Agronomic Crops in Benguet | | | | PIUC | CA |

Extension Services

There were four banner programs for CY 2003, namely, BSU on the Air, Quick Response Service, Training and Outreach, Technology Demonstration Farm and other extension activities.

- ☉ **BSU on the Air** a program of the University, disseminates information through the Mt. Province Broadcasting Corporation Station DZWT every 5:30 to 5:45 am. A wide array of lectures were aired on the following aspects:
 - Crops and livestock production (includes crop management, pest control and post-harvest handling)
 - Food processing
 - Health issues (nutrition and management of human diseases)

- Support systems such as cooperatives, financial and disaster management

- ☉ **BSU Quick Response Service (QRS)**. The QRS of the University responded to the call of the Municipality of Kabayan for the control management of earthworm (*bileg*) in rice paddies in Adaoay, Kabayan, Benguet from Aug 2002 to May 2003 in coordination with the Municipal Agriculture Office of Kabayan. Control trials showed that Neem leaves have potentials in controlling earthworms in rice paddies. Cauliflower as rotation crop after rice increases the ROI to 150%. Four new hybrid rice varieties were also introduced for evaluation of their resistance to earthworm.

On-site techno-transfer training and demonstration on the rejuvenation of coffee and rooting methods of mountain tea (*gipas*) were done in Lusod, Kabayan with the coordination of DAR-Benguet, DTI and Office of the Provincial Agriculturist-Benguet. The project started August, 2003 and will continue up to August, 2004.

☺ **Training and Outreach programs.** The following training and outreach activities services were also done on call basis:

- Organic Farming – Training on organic farming was done after the open forum on the existing status of vegetable industry in the locality on March 20, 2003. This activity was coordinated with LGU-Buguias and DAR.
- Training – Seminar on Post-harvest Technologies and Marketing of Chrysanthemum and Roses. The participants were trained on recent research results on post-harvest handling and use of new packaging materials on September 19, 2003. This activity was coordinated with Post-harvest Research and Training Center (PHRTC).
- Mushroom Production. The University gave training on mushroom production to selected farmers in Benguet and nearby provinces with the support of the Shountog Foundation.

☺ **Technology Demonstration Farms.** The updates on the Technology demonstration farms established by the University are as follows:

A. Participatory Technology Adoption Projects

Agro-forestry demo-farms. Three demo-farms that were established with three farmer cooperators in Ambongdolan, Tublay; Banengbeng, Sablan; and Gaswiling, Kapangan, Benguet. Each cooperator was given seedlings of G-melina, mahogany, rambutan, and oranges. Results show that the survival rates of the seedlings planted by the cooperators in Tublay and Sablan range from 59% to 83%, and the plants are doing well. Those planted in Kapangan have slow growth because of disease incidence and poor soil. The project was supported by with a funding of ₱ 21,950.00 from Cordillera Highland Agricultural Resource Management Project (CHARMP).

Passion fruit production using kniffin trellis. This is an ongoing project with two farmer cooperators in Upper Abiang, Atok, Benguet. As of this year, two farmer-cooperators are still beginning to recover their expenses. This project was supported by a fund of ₱ 26,840 from the Cordillera Highland Agricultural Resource Management Program (CHARMP).

Old coffee tree rejuvenation project. The same farmer cooperators of the passion fruit production technology were tapped for this project. So far, 71 old Arabica coffee trees were pruned. On the second year, 66 of the rejuvenated coffee trees were burned by flames from dried grasses around them. However, 45 again rejuvenated. Branches were thinned to maintain the quality of coffee berries. The project was supported by CHARMP with an amount of P16,920.00.

Chayote virus control through intensive organic fertilization. This project was established in Taloy Sur, Tuba, Benguet. The extension workers of the University demonstrated the proper and intensive use of compost as fertilizers for chayote. The demonstration also served as a trial for minimizing chayote virus. This project was assisted by CHARMP with an amount of P 17,256.00.

B. PLASTRO and KOICA demo greenhouses. This greenhouse technology was introduced by a private company. Produced in the greenhouse are chrysanthemums and strawberries. The project produced chrysanthemum flowers from 160m² area. From the clean strawberry runners (Sweet Charlie variety) produced, 37,750 runners were distributed to strawberry growers in La Trinidad in coordination with the LGU of La Trinidad.

C. Piloting of commerciable strawberry technologies. This pilot project was established at the BSU experimental field using commerciable technologies on strawberry production such as the use of runners as planting materials; use of planting materials grown from high elevation; use of drip and sprinkler irrigation system; and use of runners stored in cold storage. Still on-going, this project is supported by a P 150,000 funding from Land Bank-Technology Piloting Center (LB-TPC).



© Other Extension Activities

- A Community Agriculture-based Livelihood Enhancement (CABLE) project was implemented in Kapangan, Benguet through the Department of Agricultural Economics and Agribusiness Management. Technologies related to livelihood development such as cooperative appreciation, live-stock raising, beekeeping, etc. are continuously being disseminated through seminars and hands-on lectures. This project is still on-going and being done in partnership with Saint Louis University and LGU Kapangan.
- A research project on the farming activities of farmer Field School graduates in Bokod and Kabayan, Benguet was organized with the faculty of the BSU-Bokod Campus in partnership with the Institute of Highland Farming Systems and Agroforestry (IHFSA) and Agricultural Training Institute-CAR. This is being done to strengthen the research program of the BSU-Bokod Campus.
- Neys-van Hoogstraten Foundation (NHF) Project. This was a follow-up action research on the contribution of sweetpotato to income and nutrition by the Northern Philippines Rootcrops Research and Training Center in collaboration with Wageningen University, MS students, LGU's of Pico and La Trinidad and the Balili Elementary School. This project involved coming up with a baseline survey; implementing nutrition interventions to improve children's consumption of fruits, vegetables and rootcrops; and developing IEC materials.
- Through the College of Veterinary Medicine, gilt dispersal program was implemented for the Municipality of Kapangan. A total of five gilts were purchased and distributed to farmer-partners after they have signed a MOA. Rabies control campaign was implemented by conducting a seminar-workshop with barangay, municipal, provincial officials who are concerned with legislation and human health. Dog owners with rabies-positive dogs were interviewed.
- Through the College of Nursing, the Reproductive Health Care Center provided services related to reproductive health problems: pre- and post-reproductive health counseling on family planning, diabetes, pap smear screening, breast self-examination, adolescent reproductive health and other basic health services within the locality. Some faculty members participated in medical missions during semestral breaks, weekends and holidays. Other health information were also



disseminated through the "BSU on the AIR" program through the DZWT radio station.

- Through the Philippines Institutional University Cooperation (PIUC) Program, a grand joint outreach was conducted in Lomon, Kapangan Open Gym on November 16, 2003. It was a joint program by the Benguet State University, Saint Louis University, and Pines City Colleges. The Institute of Social

Research and Development was responsible in the livelihood program and social/peers orientation through film showing. People from Central Barangay, Pongayan, Paykek, Labueg, Pudong, and Datacan were provided free medical and dental check-ups, and circumcision. They were also lectured on family planning, livelihood program, soil analysis.



As a part of the extension activities of the faculty members and research staff, they were tapped as resource speakers/lecturers during trainings, seminar-workshops in line with their field of specializations.

| Title of Topic/Paper Presented | Title of Seminar, Workshop, Training | Venue | Duration | Sponsoring Agency | Person/s Involved |
|---|---|---|--------------------------|--------------------------|--------------------------|
| Organization of the Luzon Yam Network | The 1 st Luzon Yam Conference | NPRCRTC | Dec 29-31, 2003 | NPRCRTC, BSU | Violeta B. Salda |
| Integrated pest Management on Vegetables | | Malaybalay, Bukidnon | December 17-19, 2003 | FAO – UN | E.V. Cardona, Jr |
| Fertilizer Recommendations of Some Crops under Benguet Conditions | Consultation Workshop on Updating Fertilizer Recommendations for Rice, Corn, Other Field Grains, Fruit Trees, High Value Commercial Crops, and Root Crops | Long Beach Resort Hotel, Bauang, La Union | Dec 16-17, 2003 | DA Region 1 | Carlito P. Laurean |
| Research Proposal Formulation from Agricultural Technicians of CHARMP-covered Municipalities in CAR | Research Write-up, Summary and Conclusion | | November 27, 2003 | ATI-CAR CHARMP | Sonwright B. Maddul |
| Chayote Production and Economics | | Atok, Benguet | November 12, 2003 | BSU | J.S. Ligat |
| A Keynote Speaker on a Seminar on Language Teacher Development: A Continuing Process | Teacher Development Seminar | ASIST, Lagangilang, ABRA | September 27, 2003 | ASIST, Lagangilang, Abra | Gilda B. Jacalan |
| Management of Insect Pests of Vegetables | | Kapangan, & Abatan, Benguet | Sept r 24, & Oct 2, 2003 | Syngenta Phil. | E.V. Cardona, Jr. |
| Plant Tissue Culture | | BSU | September | BSU | V.D. Alejandro |
| Integration of Rabbits and Ducks with Crop Production | Technology Dissemination Conference | Hotel Tepeyac Baguio City | August 22 | DA-CHARMP HARRDEC | S.B. Maddul |
| Pesticide Use and Handling | | Kapangan, Benguet | August, Sept, and Nov | BSU | B.S. Ligat, C.S. Pagadan |
| Probiotics and Beneficial Microorganisms for Enhanced Swine Production | Technology Dissemination Conference | Hotel Tepeyac Baguio City | August 22 | DA-CAR HARRDEC | C.S. Battad |
| Soil and Water Sampling, Collection and Analytical Procedures | Skills Enhancement for the Promotion of Research-Based Community Extension Services | SLU | July 27 | PIUC BSU SLU | Carlito P. Laurean |
| Floral Design and Flower Arrangement | | Tuba, Benguet | July 31 | DA – CHARMP | A.G. Ladilad |
| Anthurium Production | | Tuba, Ben- | July 29-30 | DA – CHARMP | A.G. Ladilad |

| Title of Topic/Paper Presented | Title of Seminar, Workshop, Training | Venue | Duration | Sponsoring Agency | Person/s Involved |
|--|---|--|----------------------------|--|-------------------|
| and Management Training | | guet | | | |
| Cropping Schemes and Production Economics | Seminar on crop diversification and market prospects and strategies | BSU | July 8 | BSU | P.B. Alipit |
| Training on Propagation of Indigenous Orchids and Bonsai | | Santa Fe, Nueva Viscaya | March 26-28 | CASCADE, Kalahan Educational Foundation, Inc | V.D. Alejandro |
| Management of Soil Insect Pests | | | March | BSU | B.S. Ligat |
| Strawberry Variety Improvement | | Baguio City | March | ABS-CBN | D.P. Padua |
| Heat Stable Enterotoxin for Salmonella Isolates | 70 th Annual Convention and Scientific Conference | Bohol Tropics Resort Tagbilaran City Bohol | Feb. 19-21 | Phil. Vet. Med Association | C.S. Battad |
| Chayote Mosaic Virus | Farmers' Seminar | Tublay, & Kibungan, Benguet | February 17 November 20 | BSU | J.S. Ligat |

Publications

1. BSU RESEARCH JOURNAL, June-Oct 2002 (circulated)
2. BSU RESEARCH JOURNAL, Dec 2002 (circulated)
3. BSU RESEARCH JOURNAL, March 2003 (circulated)
4. BSU RESEARCH JOURNAL, June 2003 (circulated)
5. RANGTAY, Jan-June 2003 (circulated in July)
6. RANGTAY, July-Dec 2003 (circulated)
7. VILLANUEVA, L.M. 2003. Wilt Disease Threatens Chrysanthemum production. HARDIN. The National Ornamental Network News Update.
8. Other publications: leaflets, posters, pamphlets on:
 - Sweetpotato production
 - Sweetpotato varieties
 - Sweetpotato planting materials production
 - Sweetpotato recipes
 - Contribution of sweetpotato to income & nutrition
 - Potato production (English & Ilocano)
 - Nutritional situation
 - Nutritional value of common vegetables, fruits and root-crops

Research and Development Awards

1. 1st PRIZE: RESEARCH PAPER: Survey and Identification of Soil-borne Plant Pathogen by Dr. Lily Ann D. Lando; given by Highland Agriculture Resources Research and Development Consortium (HARRDEC) during the Regional Symposium at Closed Gym, BSU, La Trinidad, Benguet on August 13-14, 2003.
2. 2nd PRIZE: RESEARCH CATEGORY: Assessment of the Philippine Agricultural Research, Development and Extension System by Dr. Rosana P. Mula et al. ; given by Highland Agriculture Resources Research and Development Consortium (HARRDEC) during the Regional Symposium and Farmers Forum at Closed Gym, BSU, La Trinidad, Benguet on August 13-14, 2003
3. 2nd PRIZE: DEVELOPMENT PAPER: Potato and Sweetpotato Livelihood Project for the Lowlands of Northern Luzon by Prof Jocelyn C. Perez et al. given by Highland Agriculture Resources Research and Development Consortium (HARRDEC) during the Regional Symposium and Farmers Forum at Closed Gym, BSU, La Trinidad, Benguet on August 13-14, 2003.
4. 1st PRIZE RESEARCH POSTER: Diseases of Vegetable Crops with Economic Importance in the Cordillera: A Compendium by Dr. Asuncion Nagpala and Dr. Lily Ann Lando given by Highland Agriculture Resources Research and Development Consortium (HARRDEC) during the Regional Symposium and Farmers Forum at Closed Gym, BSU La Trinidad, Benguet on August 13-14, 2003.
5. BEST INSTITUTIONAL BOOTH: Given to BSU Research and Extension Services by Highland Agriculture Resources Research and Development Consortium (HARRDEC) during the Regional Symposium and Farmers Forum at Closed Gym, BSU La Trinidad, Benguet on August 13-14, 2003.

Linkages/ Partnerships

The following institutions/ agencies were the partners of the University in propelling research development and extension endeavors in the Cordillera and nearby regions. These institutions/ or-

ganizations provided project funds, shared expertise and facilities to facilitate the conduct of research, development and extension programs of the University.

| INSTITUTION | NATURE OF LINKAGE |
|---|---|
| Local | |
| Agricultural Training Institute-NTC | <ul style="list-style-type: none"> • Extension Support |
| Allied Botanical Corporation | <ul style="list-style-type: none"> • Variety Trial on Vegetable |
| BAR (Bureau of Agricultural Research) | <ul style="list-style-type: none"> • Tissue Culture Research and Development Program for Highland Crops • Fungal Hyperparasites and Bacterial Antagonists as Component of Integrated Disease Management Program of Chrysanthemum White Rust |
| Bataan State College (BSC) | <ul style="list-style-type: none"> • Sweetpotato Clean Planting Material Production |
| Bayer Phils. | <ul style="list-style-type: none"> • Insecticide Trial Against Leafminer of Highland Crops |
| BCNO (Baguio City Nutrition Office) | <ul style="list-style-type: none"> • Women in Sweetpotato Enterprise Development in La Union Province and Baguio City, Northern Philippines |
| BPI-BNCRDC (Baguio National Crops Research and Development Center) | <ul style="list-style-type: none"> • Integrated Management of Potato Leafminer |
| Builders Rural Bank, Inc. | <ul style="list-style-type: none"> • Strawberry Varietal Development Program |
| CIP-UPWARD (International Potato Center -Users Perspectives for Workers Research and Development) | <ul style="list-style-type: none"> • Potato and Sweetpotato Livelihood Project for the Lowlands of Northern Luzon |
| DA-CARFU (Department of Agriculture-Cordillera Administrative Region and Field Unit) | <ul style="list-style-type: none"> • Integrated Management of Potato Leafminer |
| DA-CHARMP (Department of Agriculture Cordillera Highlands Agricultural Research Management) | <ul style="list-style-type: none"> • Project Benefit Monitoring and Evaluation (PBME) of CHARMP • Survey and Identification of Soil Borne Plant Pathogen in Mt. Province |
| Department of Agrarian Reform (DAR) | <ul style="list-style-type: none"> • Benguet Farmers Aduyon Center for Rural Development (BFCARD) |
| DMMMSU (Don Mariano Marcos Memorial State University) | <ul style="list-style-type: none"> • Sericulture Project |
| DOLE/ Province of Ifugao | <ul style="list-style-type: none"> • Sweetpotato Production and Processing Enterprise in Ifugao |
| DOST-CAR | <ul style="list-style-type: none"> • Research and Development |
| HARRDEC (Highland Agriculture Research Resources Development Consortium) | <ul style="list-style-type: none"> • BSU as Host Institution/Secretariat |
| IPB (Institute of Plant Breeding) | <ul style="list-style-type: none"> • Improvement of Highland Vegetable Crops |
| Land Bank of the Philippines | <ul style="list-style-type: none"> • Technology Promotion Center |
| LGU of Kapangan | <ul style="list-style-type: none"> • Adopt a Community in Kapangan (funded by PIUC) |
| LGU of La Trinidad; Benguet | <ul style="list-style-type: none"> • Biological Control of Phytophagous Mites and Aphids in Selected Crops in the Cordillera |
| LGU of Aringay | <ul style="list-style-type: none"> • Sweetpotato and Potato Lowland Production |
| LGU of Atok | <ul style="list-style-type: none"> • Improvement of the Seed Production Technology in the Philippines (Community-Based Nurseries (Go) Production |
| LGU of Bokod | <ul style="list-style-type: none"> • Assistance in the conduct of social researches |
| LGU of Itogon | <ul style="list-style-type: none"> • Rootcrops Processing |
| LGU of Kabayan | <ul style="list-style-type: none"> • On-farm Research on the Control Management of Earthworm in Rice Paddies |

| INSTITUTION | NATURE OF LINKAGE |
|---|---|
| MMSU (Mariano Marcos State University) | <ul style="list-style-type: none"> • Potato and Sweetpotato Lowland Production |
| Mt. Province Broadcasting Corporation Station DZWT | <ul style="list-style-type: none"> • BSU on the Air |
| Municipality of La Trinidad; Benguet | <ul style="list-style-type: none"> • Biological Control of Phytophagous Mites and Aphids in Selected Crops in the Cordillera |
| Neys-van Hoogstraten Foundation | <ul style="list-style-type: none"> • Contribution of Sweetpotato Production and Processing to household Income and Nutrition |
| Nueva Viscaya State Institute of Technology Philrice | <ul style="list-style-type: none"> • Potato NCT Trials |
| Plastro Phils. | <ul style="list-style-type: none"> • Rice KCS:BSU as Regional Research Station for Rice • Development of Rice Cool Tolerant Varieties |
| TCA (Tarlac College of Agriculture) | <ul style="list-style-type: none"> • BSU-PLASTRO Greenhouse with Drip Irrigation System |
| TESDA (Technical Education Skills Development Authority) | <ul style="list-style-type: none"> • Potato and Sweetpotato Livelihood Project for the Lowlands of Northern Luzon |
| US PEACE CORPS | <ul style="list-style-type: none"> • Dissemination of Technologies during sponsored trainings |
| ViSCA (Visayas State College of Agriculture) now Leyte State University | <ul style="list-style-type: none"> • Integrated Farming System Extension Program • National Cooperative Testing on Sweetpotato |



Research and Extension Staff Development

In order to develop the capabilities of the University researchers and extension workers, some faculty and staff members were sent to attend seminar-workshops. The University also

conducted some in-house seminars/workshops and encourage its faculty and staff to pursue their graduate degrees.

| Title of Seminar/Workshop | Venue | Date | Sponsor | Person/s/Office Involved |
|--|--|--------------|---|--|
| Workshop on Updating Fertilizer Recommendations for Various Crops | Long Beach Resort, La Union | 12/16-17/03 | DA Region 1 | Carlito P. Laurean |
| Accredited Researchers Training for Fertilizer | CEC, UPLB | 12/10-12/03 | FPA & Pesticide Mgt Council of the Phil. Found'n. | Carlito P. Laurean |
| Zonal Research Project | BSU, La Trinidad, Benguet | 12 / 3/03 | ZRC-CHED BSU | Carlito P. Laurean Ma. Klondy T. Dagupan Lorenza C. Balaoing |
| 10 th International Agribusiness Exhibition and Seminars and 4 th International Food Processing/Packaging and Food Products Exhibition | World Trade Center, Roxas Blvd. Metro Manila | 10/17/03 | | Carlito P. Laurean Amelia M. Kimeu Wilma L. Marquez Natividad Demot Criselda S. Battad |
| Regional Technical Working Group 4 th Quarter Meeting, Planning Workshop & HARRDEC Anniversary Celebration | ISCAF Nayon, Lamut, Ifugao | 10/ 24-25/03 | HARRDEC, ISCAF | Office of the VPRE |
| Zonal Research Program Conference-Workshop | MMSU, Batac, Ilocos Norte | 10/17-18/03 | ZRC-CHED | Carlito P. Laurean |
| Biotechnology | UP Baguio | 10 /13/03 | UP Baguio | Cynthia G. Kiswa |
| Workshop on the Proposed Ornamentals Marketing Center | ATI-NTC, BSU, La Trinidad, Benguet | 10/13/03 | BSU DA | VPRE and RDE Staff DA officials Farmers |
| Workshop on the Development of GEF Proposal on Strategic Environmental Entrepreneur-ship in Selected Ecological Corridors in Cordillera, Philippines | ATI-NTC, BSU, La Trinidad, Benguet | 10/ 6-7/03 | DA-CAR | Carlito P. Laurean Zyla C. Macasieb John G. Tacloy |
| 8 th Floriculture Congress | BSWM, Quezon City | 10 /6/03 | | Sonwright B. Maddul et al. |
| Forum Workshop on Health and Social Science Perspectives Towards Research and Advocacy Capability Building | Baguio Country Club | 9/ 26/03 | Phil. Health and Social Science Association (PHSSA) | Jarlet Siano |
| 8 th National Educators' Assembly for Environmental Protection & Management | Fort Ilocandia, Laoag City | 9/17-19/03 | PATLEFAM DENR-EMB | Carlito P. Laurean |
| Plant Variety Protection | ATI, BSU | 9/15/03 | | Johnny G. Dati |
| In-Country Learning Workshop on Participatory Research and Development | La Maja Rica Hotel, Tarlac City | 9 / 4-5/03 | CIP- UPWARD | Jocelyn C. Perez Jovita M. Sim |

| Title of Seminar/Workshop | Venue | Date | Sponsor | Person/s/Office Involved |
|--|----------------------------|-------------|-----------------------|---|
| Policy Conference on Higher Education | | 8/30/03 | CHED-CAR | Sonwright B. Maddul |
| Intellectual Property Rights and Market Encounter for ARCs in Ancestral Domains in the Cordilleras | Skyrise Hotel, Baguio City | 8/ 28-29/03 | NCIP-CAR and DAR-CAR | Ma. Klondy T. Dagupen |
| Internet/Intranet Awareness Seminar | RITC, BSU | 8/18/03 | PIUC.BSU | Dalen T. Meldoz |
| Technology Dissemination Conference | Reneca Hotel, Baguio City | 8/18-22/03 | HARRDEC and CHARMP | Sonwright B. Maddul Carlito P. Laurean Rosana P. Mula |
| Regional RDE Symposium and Farmers Forum | BSU, La Trinidad, Benguet | 8/13-14/03 | HARRDEC BSU | Office of the VP RDE Technical Staff |
| Consultative Workshop on the Community-Based Monitoring of Pesticide | BSU, La Trinidad, Benguet | 7/28/03 | BSU, NCPIS-DOH Manila | Carlito P. Laurean Lita M. Colting |
| PCASTRD Information Campaign on Its Priority Areas | UP Baguio | 7/25/03 | PCASTRD | Carlito P. Laurean |
| Project Management in Poverty Free Zone Areas in Banaue, Ifugao | Ifugao | 6/25-28/03 | BRW-DOLE | Ines C. Gonzales Hilda L. Quindara |
| Biotechnology, Health and Society: Bridging Education, Research and Environment | Supreme Hotel, Baguio City | 6/ 25-27/03 | DA-BAR | Jocelyn C. Perez Paz A. Dalang Cynthia G. Kiswa Grace S. Backian |

In-house seminars and workshops conducted in relation to research and development

| Title of Seminar/Workshop | Venue | Date | Sponsor | Persons Involved/ participants |
|--|--|------------------|-----------------|---|
| Zonal Research Project Proposal Preparation Workshop | BSU, La Trinidad, Benguet | December 3, 2003 | ZRC-CHED BSU | C, P. Laurean M. K. T. Dagupen L. C. Balaoing |
| Initiating Intellectual Property Management Mechanisms in Benguet State University | BSU, La Trinidad, Benguet | Dec. 4-5, 2003 | BSU HARRDEC | VPRE and RDE Selected Staff |
| Consultation-Workshop on the Establishment of Ornamental Marketing Center at BSU | BSU, La Trinidad, Benguet | Sept. 26, 2003 | BSU | |
| Seminar-Workshop on Project Proposal Preparation | BSU, La Trinidad, Benguet | Sept. 1-4, 2003 | BSU PCASTRD | VPRE RDE Staff |
| Internet/Intranet Awareness Seminar | BSU | August 18 | BSU/ PIUC | Selected Staff |
| Research Methods for Social Scientists | ICT Hall, BSU | May 19-30 | BSU-PIUC | 40 participants from BSU, other SCUs, and line agencies |
| Training on Ex-ante Socio-economic Evaluation of R & D Projects | Training on Ex-ante Socio-Econ. Evaluation of R & D Projects | March 5-8 | BSU -PIUC | 18 Faculty and Researchers |

PRODUCTION

Under Production function, the University engaged in business type or commercialized production activities that demonstrate breakthroughs of instruction, research and extension. Through this function, revenues are generated to provide logistic support to the programs and projects of the University, as well as, to augment the maintenance and other operating

expenditures (MOOE). It further provides employment to students and out-of-school youths in the community, and also serves as a venue for small-scale business opportunities to uplift the economy of the urban poor.

For the year 2003, the University was about to earn a net income of P28,923,495.19.

I. Income Generating Projects

| PROJECT | GROSS INCOME | TOTAL EXPENSES | NET INCOME | ROI(%) |
|--------------------------------|---------------------|---------------------|----------------------|--------------|
| 1. Fund 161 | | | | |
| Agroforestry | 172,765.00 | 77,431.60 | 95,333.40 | 123.12 |
| Bakery | 629,441.65 | 383,272.50 | 246,169.15 | 6.21 |
| Cattle (Dairy) | 123,051.50 | 69,970.91 | 53,080.59 | 75.86 |
| Floriculture | 16,495.00 | 107,883.20 | (91,388.20) | 34.32 |
| Food Processing | 1,522,886.34 | 309,810.49 | 1,213,075.85 | -84.71 |
| Marketing Center | 1,361,679.90 | 412,018.44 | 949,661.46 | 8.52 |
| Multi Vegetable | 113,606.50 | 70,854.42 | 42,752.08 | 60.34 |
| Mushroom | 33,952.59 | 128,772.00 | (94,819.41) | -73.63 |
| Pomology | 30,600.00 | 44,630.96 | (14,030.96) | -31.44 |
| Potato Seed Production | 94,700.00 | 40,665.00 | 54,035.00 | 174 |
| Poultry(Egg Production) | 4,102,698.51 | 2,284,367.77 | 1,818,330.74 | 79.60 |
| Souvenir Gift Shop | 158,100.50 | 87,253.01 | 74,847.49 | 85.70 |
| Swine/Piggery | 324,500.00 | 385,675.68 | (61,175.68) | -15.86 |
| TOTAL | 8,684,477.49 | 4,402,605.98 | 4,281,871.51 | 18.76 |
| 2. Fund 163 | | | | |
| CEAT Canteen | 111,785.33 | 99,636.40 | 12,143.93 | 4.42 |
| CHET Showcase | 521,281.60 | 305,894.08 | 215,387.52 | 41.86 |
| Dormitory | 421,908.50 | 288,685.22 | 133,223.28 | 46.15 |
| ELS Canteen | (530.06) | 121,988.70 | (122,518.76) | -21.30 |
| Guestels (HMEG) | 754,737.00 | 287,703.77 | 467,033.23 | 162.33 |
| RSDC Cafeteria | 1,489,365.83 | 809,940.28 | 679,425.55 | 15.65 |
| SLS Canteen | 340,745.92 | 135,695.20 | 205,050.72 | 37.16 |
| Vet. Clinic | 456,148.46 | 402,689.77 | 53,458.69 | 13.03 |
| TOTAL | 4,095,442.58 | 2,452,233.42 | 1,643,209.16 | 22.71 |
| 3. Fund 164 | | | | |
| Agricultural Land/Bldg Rentals | | | 4,152,715.59 | |
| Commercial/Livelihood Stalls | | | 1,563,187.00 | |
| Tuition and other fees | | | 17,282,511.93 | |
| Total | | | 22,998,414.52 | |
| GRAND TOTAL | | | 28,923,495.19 | |

II. New Projects Implemented

- A. MCDO FASTFOOD (BLT)
- B. BSU – Purified Water Refilling Station (FRESHDROPS)

III. Salient Developments on Production

- ⊙ The Annual Production Plan was approved, implemented and monitored in accordance with NBC 331, COA Circular No. 84-239, and existing government accounting and auditing policies, rules and regulations.
- ⊙ The Incentive Scheme for Income Generating Project (IGP) staff was implemented after it was approved by the Board of Regents in accordance with limitations under NCC 75, specifically for IGPs under Revolving Fund 161 and 163.
- ⊙ Greenhouses for the following agri-based projects were constructed: (1) high valued crops; seed production; and floriculture (cut-flowers).
- ⊙ Projects were expanded in terms of space, acquisition of equipment, renovations, relocation, etc. The poultry house was extended to accommodate alternate flocks to assure continuity of egg production whble year round. The facilities of the cafeteria outlets (RSDC/ELS/CEAT) were repaired and kitchen utensils and equipment were acquired. The Food Processing Center and Bakery were repaired and renovated and additional shelves and display cabinets for the Marketing Center were acquired.
- ⊙ The equipment for use of administration support units, land reservation, security, etc. were augmented equipment included communication units, typewriters, computers, generators.
- ⊙ Monthly reports from IGP managers whose projects produce ROI based
 - ⊙ on their production plan submitted in January 2003 were promptly handed in. This came about because supervision and monitoring of project activities.
 - ⊙ Colleges and other departments worked closely for the institutionalization of College/Department IGPs for self-reliance, augmentation and sustainability as well as for transparency.
 - ⊙ Memorandums of agreement with individuals, agencies (private-government), developers, partners, etc. for University's land use were inked.
 - ⊙ Supplied processed foods and rendered catering services to government agencies like DA-CAR, LGUs, etc.
 - ⊙ BSU income-generating products were advertised through local as well as regional papers and anniversary celebration programs of LGUs, NGOs, etc.





General Administration

GOVERNANCE

A New University Leadership

On July 1, 2003, Dr. Rogelio D. Colting became the new President of the Benguet State University, with a four-year term of office. In no time, Dr. Colting bared his Ten-Point Agenda for the first 100 days of administration. The agenda focused on the following areas: academic programs and instruction; research and development; extension services; resource generation; administration and governance; information and communications technology; human resources development and personnel welfare; student service and welfare program; culture and arts program; disaster and emergency program; and security. This set the tone for a more vigorous pursuit of excellence, fruits of which became apparent at the end of the 100-days period in the specific areas identified.

With the new President arose a new administrative team. Three young and energetic personnel were designated Vice President as follows: Dr. Feliciano G. Calora Jr. for Academic Affairs, Dr. Sonwright B. Maddul for Research and Extension, and Dr. Darlyn D. Tagarino for Planning and Development. New deans, directors and chairpersons were given the mandate to pursue changes in their respective colleges/institutes/units. Each was given a two-year term of office.



Changes in the Governing Board

Three members of the Board of Regents were changed. After leading the successful selection of the new BSU President, Hon. Ester Albano-Garcia, retired from government service. Hon. Rolando R. Dizon, on becoming the Chair of the Commission on Higher Education on June 1, 2003, took over the Chair of the Benguet State University Board of Regents. During its 106th meeting, the chair took his oath together with other new members, namely, Dr. Edna A. Chua, BSU Faculty Club President, and Dakila F. Padua, President of the Supreme Student Council.

From January to June 30, 2003, the Board of Regents acted on 22 resolutions addressing various concerns of the University. From July 1 to the end of the year, the Board passed 47 resolutions, foremost of which were the creation of the presidential search committee; grant of honoris causa, Doctor of Development Studies, to Prof. Dr. Joseph Leunis; revision of the BS Forestry-Agroforestry major and the merger of the Elementary Music and Arts and Physical Education under the Bachelor of Elementary education; approval of the status quo in the secondary levels of the integrated campuses; approval of the granting of

scholarships to the presidents of the FFPCC and the COMELEC; selection of Dr. Colting as BSU President; approval of the award of a Professor Emeritus to Dr. Cipriano C. Consolacion; approval of the University Financial Management Protocol; creation of a committee to look into the creation of a subsidiary corporation at BSU; creation of an Executive Finance Committee; and reconstitution of the search committee for two prominent citizens to fulfill the stipulations under Republic Act 8292 "Higher Education Modernization Act of 1997."

Leading Change

The new President choosing to effect change, initiated the conduct of a series of proactive activities from July to November.

From June 30 to July 1, a seminar-workshop on financial management protocol was held at the Agricultural Training Institute-National Training Center. The members of the University Administrative Council actively participated. The resource persons included Dir. Liza Fangsilat of the Department of Budget and Management-CAR; Dir. Mary Bacwaden, Cluster Director for Education of the Commission on Audit-CAR, and Dir. Magdalena Jasmin of the Commission on Higher Education-CAR. This seminar-



workshop resulted to the development of a University financial management protocol.

In August, the entire university operations were reviewed by a team of selected key BSU personnel, it thoroughly evaluated the operation of the following sectors: academic, research and extension, administration, and production.

Based on recommendations made by the internal reviewers, an external review team was organized in September. The team validated the findings of the internal reviewers through interviews with key informants, ocular observations, and review of pertinent University documents. They gave other valuable insights for improving University operations. This team is composed of the following prominent individuals:

On November 5, 2003, various sectoral heads met with their respective deans/ directors/ heads in a pre-planning workshop for the following purposes: 1) to review the Ten-Year University Plan (2002-2011), 2) to review the 2003 University Operations Plan, and 3) to assess what recommendations made during the internal and external reviews could be adopted.

In subsequent meetings, the various sectors prepared their medium term plans. The Planning Workshops held from November 17 to 19 at the Coconut Groove in La Union culminated the activities conducted since August. The following were the outputs; finalization of the BSU Medium-Term Plan 2004-2007, revision of the Vision, Mission, Objectives and Goals, of the University and revision of the University Organizational Structure.

For the Academic Sector:

Dr. Kate Botengan- Retired Chair, Commission on Higher Education
Dr. Fernando Bernardo- Retired President, Visayas State College of Agriculture

For the Research & Extension Sector:

Dr. Maruja Lorica- Program Director, Consortium Operations Office, PCCARD
Dr. Santiago Obien- Retired Director. PHILRICE

For the Administration Sector:

Dr. Fortunato Battad –Retired President, Central Luzon State University
Dr. Saturnino Ocampo Jr.- President, Mariano Marcos State University

For the Production Sector:

Dr. Eduardo Marzan- Professor, CLSU
Dr. Ernesto De Chavez- President, Batangas State University



In pursuit of better governance, the budget committee of the University was formally convened during the last quarter of 2003. The committee worked on the improvement of the University the financial

management. It suggested that financial resources be tapped by expanding local and foreign networking, that funds be properly used, and that disallowances be maximized.

ADMINISTRATION

Administrative Staff Development

The University continuously supports the development of its administrative staff by encouraging them to pursue their graduate studies, and/or granting them partial scholarships. This year, four administrative personnel finished their graduate degrees. Others are still on-going.

| Name | Office Unit | Degree | University |
|---------------------------|-----------------------------|---------------------------------|--------------------------|
| Awingan, Patselyn | HRMO | Master in Public Administration | Benguet State University |
| Lascano, Elizabeth | Library | Master in Public Administration | Benguet State University |
| Mating, Bernadette | Legal Office | Master in Public Administration | Benguet State University |
| Mondoza, Cheryl Moanoa R. | OSA | Master in Public Administration | Benguet State University |
| Vazquez, Shella Mae | College of Arts and Science | Master in Public Administration | Benguet State University |

Administrative Staff Retirees

Seven administrative personnel including the University President, Dr. Cipriano C. Consolacion retired from the University service in 2003.

| Name | Position | Date Retired |
|--------------------------|-------------------|---------------|
| Angco, Almirante V. | Cook II | Feb. 1, 2003 |
| Baybay, Andrew M. | Farm Worker II | Feb. 1, 2003 |
| Palaez, Teresita A. | Dentist IV | May 10, 2003 |
| Consolacion, Cipriano C. | SUC President III | June 30, 2003 |
| Wayan, Pablo | Farm Worker II | July 1, 2003 |
| Dawson, Romeo P. | Carpenter II | July 4, 2003 |
| Anongos, Angelita F. | Col. Librarian IV | Aug 2, 2003 |

Upgrading of Physical Facilities and Equipment

The water system, one primary concerns of the University since the previous year, is on the way to being improved this year. All the needed equipment, supplies and materials were purchased. Presently, those not installed are only the distribution pipelines inside the buildings and the drinking fountains in the school canteens.

In spite of budgetary constraints, the University was able to raise the needed

amount for repairing the Sericulture Building, the Agricultural Information and Knowledge Center, and the perimeter fencing of the University land reservation in Wangal. A total of ₱3.56 million was used to purchase equipment needed such as a power generator for the use of the Open and Closed gymnasium for office equipment, ₱1,254 million was taken from the revolving fund and 145,179 from the collections of a special class, the Reviewer class, for Licensure Examination for Teachers of the University.

| INFRASTRUCTURE | SOURCE OF FUND | TOTAL COST | STATUS |
|--|-------------------|------------|-----------|
| 1. Improvement of the University Water System | GAA | 10M | |
| ✓ Well drilling of exploratory Production well (1) | | | completed |
| ✓ Pump/Generator house | | | completed |
| ✓ 150 cu.m. concrete ground reservoir (water tank) | | | completed |
| ✓ Main water system transmission & distribution (labor) | | | completed |
| ✓ Water purifying Station | | | Completed |
| ✓ Installation of distribution pipes and inside buildings and installation of drinking fountains in canteens | | | On-going |
| 2. Improvement of the Sericulture Project | University Income | 786,679.00 | Completed |
| 3. Agricultural Information and Knowledge Center | University Income | 450,345.75 | Completed |
| 4. Perimeter Fencing at Wangal, La Trinidad | University Income | 825,111.44 | Completed |

| QTY. | EQUIPMENT | TYPE/PURPOSE | SOURCE OF FUND | TOTAL COST |
|--------|---|-----------------------------|-------------------|--------------------|
| 1 unit | Generator | water system | GAA | 534,075.00 |
| 1 set | Water Refilling station (Agua Vida) | Marketing Center | GAA | 750,000.00 |
| | Pipes and Accessories for the distribution pipe lines of water system | Water System | GAA | 2,057,188.50 |
| 1 set | Survey Equipment | For use of Land Reservation | GAA | 325,000.00 |
| 1 unit | Copier | Gestetner Brand model 2732Z | University Income | 247,000.00 |
| 1 unit | Power Generator, Gym | Open and Closed gym | University Income | 673,762.00 |
| | | | TOTAL | 4,587,025.5 |



Financial Resources

As shown in the condensed financial statement ending December 31, 2003, the University had an income of P245,266,163. This amount included the share from the national budget amounting to P191,599,189. For 2003, income greatly exceeded expenses

amounting to P40,714,588. Details of the income and expenses statement are shown below.

The consolidated balance sheet for the year shows that the University had a total asset of P2,007,910,367

CONDENSED STATEMENT OF INCOME AND EXPENSES

For year ended, December 31, 2003

| | | |
|--|-------------|--------------|
| INCOME | | P245,266,163 |
| LESS: EXPENSES: | | |
| Personnel Services | 176,281,405 | |
| Maintenance and Other Operating Expenses | 28,251,489 | |
| Financial Expenses | 18,681 | 204,551,575 |
| EXCESS OF INCOME OVER EXPENSES | | 40,714,588 |

CONDENSED BALANCE SHEET

As of December 31, 2003
(consolidated)

ASSETS

| | | |
|-------------------------------|------------|---------------|
| Current Assets | | |
| Cash | 48,143,668 | |
| Receivables | 13,273,154 | |
| Inventories | 42,125,498 | |
| Pre-paid Insurance | 126,863 | 103,669,183 |
| Property, Plant and Equipment | | 1,903,356,039 |
| Other Assets | | 885,145 |
| TOTAL ASSETS | | 2,007,910,367 |

LIABILITIES AND EQUITY

| | | |
|----------------------------|------------|---------------|
| LIABILITIES | | |
| Liabilities | 16,539,004 | |
| Other liabilities | 688 | 16,539,692 |
| EQUITY | | |
| Government Equity | | 1,991,370,675 |
| TOTAL LIABILITIES & EQUITY | | 2,007,910,367 |

Major Foreign Linkage

The PIUC

PIUC, acronym for the Philippine Institutional University Cooperation Program, is an educational development grant given by the Belgian government through the Flemish Inter-University Council (VLIR) for Benguet State University in partnership with the Saint Louis University (SLU). With a P130 million grant for the two universities, the PIUC ended the four-year phase 1 on March 18, 2003. From this period until March 19, 2004, the bridging year will be implemented. The bridging year is the transition period for the implementation of another five years (Phase II, 2004 to 2009) of a comprehensive educational grant.

Accomplishments from January to December 2003

During last quarter (January 1 to March 18, 2003) of the final year of phase 1, the following were achieved: the completion of the basic university ICT network infrastructure, purchase of books and virtual facilities for the library, construction of essential research and instruction laboratories, and provision of support to the socio-economic research institute, and human resource development through short and long-term scholarships to Belgium for 21 faculty members, officials and staff.

For the bridging year, a total budget of 227,970 Euro (roughly P 13.2 million at 1 EUR = P 58) was earmarked from the PIUC for Benguet State University. For the three quarters (March 19 to December 31, 2003), significant results were obtained from the five components, as follows:

| |
|---|
| Project 1: Strengthening the SLU/BSU Network and IUC Program Management Budget: 59,987 EUR (3.5 million PhP) |
| Project 2: Institutional Management and Policy Development Budget: 6,879 EUR (0.4 million PhP) |
| Project 3: ICT Development Budget: 26,417 EUR (1.5 million PhP) |
| Project 4: Library Development Budget: 32,677 EUR (1.9 million PhP) |
| Project 5: Integrated Teaching, Research and Extension Budget: 102,010 EUR (5.9 million PhP) |

Project 1 was the result of the evaluation mission recommendation to strengthen the partnership between SLU and BSU. Numerous joint activities with SLU were conducted. This ranged from joint ICT and library training, joint research and extension, and faculty exchange.

Project 2 supported the internal and external review of BSU operations, and the pre-planning and planning proper workshops.

Project 3 on ICT Development enabled the continued acquisition of hardware and software to support the ICT laboratories, supported two ICT personnel to attend an e-learning and distance education workshop in Belgium, and initiated the development of an automated enrolment system for the university.

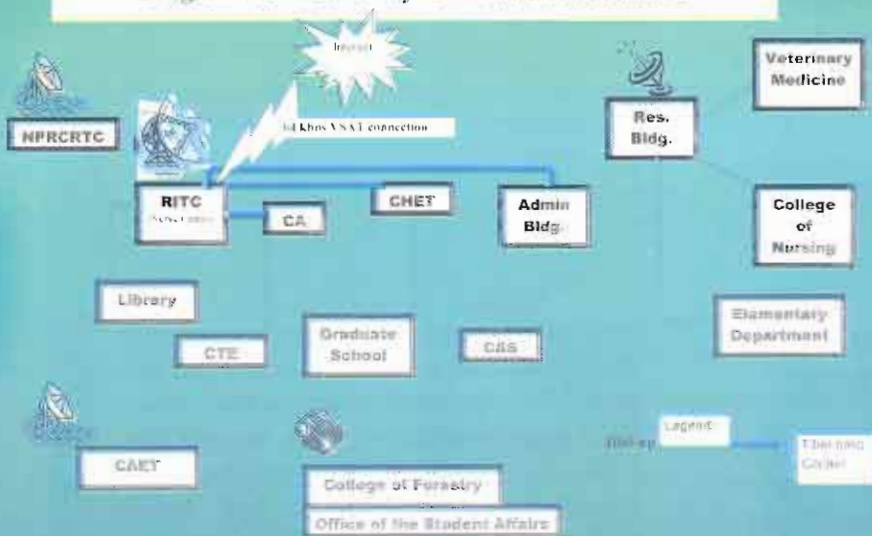
Project 4 facilitated the continued acquisition of books, journals and electronic resources for the library. For the reporting period, the Essential Electronic Agricultural Library (TEEAL)

digital journal software and the FOLLETT system was acquired. The faculty and students were informed of the library collection and facilities.

Project 5 enabled the Colleges of Agriculture, Arts and Sciences, and the Home Economics and Technology, and the Institute of Social Research and

Development to purchase state-of-the-art equipment for selected laboratories. As reported under the section on Research and Extension several researches were funded. Financial support was given to attendance to and conduct of trainings and seminars.

Benguet State University Network Infrastructure



Buguias Campus

It started as Loo Settlement Farm School on January 23, 1932 under the Department of Education with an area of 30.6487 hectares. with Proclamation # 435 it was integrated to Benguet State University on May 24, 2001.

Vision:

To be an ideal educational center where programs are varied and relevant, where appropriate knowledge, skills and values are developed and where scientific production of goods and services are provided.

Mission:

To provide and enhance quality instruction, research, extension and production by improving its programs, developing its teachers and support staff as well as students, and improving their physical capabilities.

Goal:

To empower teachers, researchers, entrepreneurs, and extension workers to be infused with high sense of values, knowledge and competitive skills so as to contribute to nation building.

Instruction

Enrolment. The total enrolment for the first semester, SY 2003-2004, was 747, with 529 (70.82%) in the secondary school, 153 (20.48%), BS courses; 21 (2.81%), short courses, and 21 ((2.81%), graduate school. The majority (117, 15.53%) of those enrolled in baccalaureate courses are taking Bachelor of Secondary Education.

Graduates of short term courses being offered took the TESDA Trade Test and worth noting is the average passing rate of 73.38%, with 100% passing rate in draftsman, tailoring dressmaking and cookery. Weakness centered on building electrician and automotive.

Graduates. For the year 2003, of the 33 graduates, 14 finished Bachelor of secondary education, five in BS Industrial Education; and 14, various short courses.

TESDA Trade Test Result

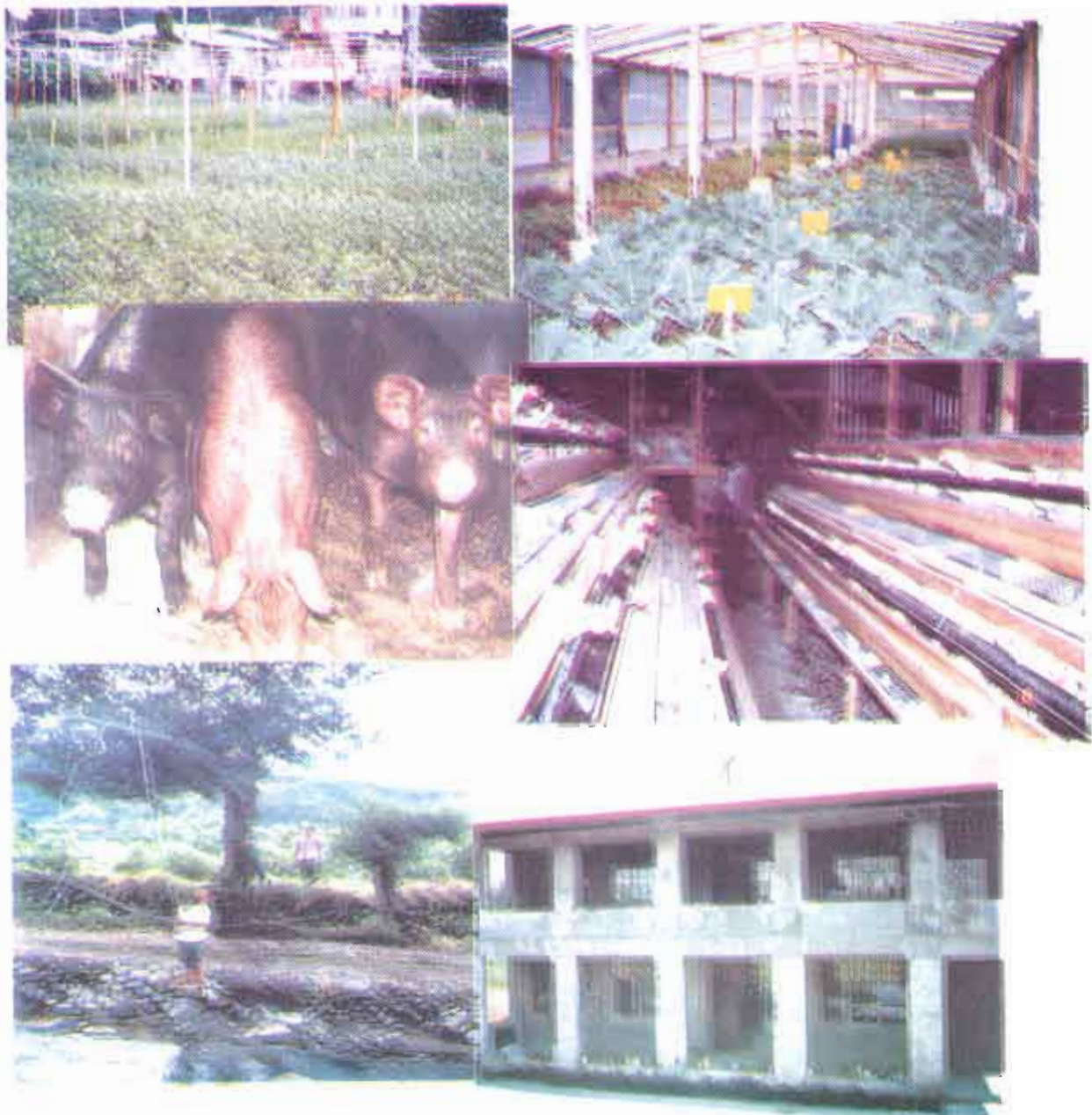
| Event | No. of Examinees | No. of Passers |
|------------------|------------------|----------------|
| Draftsman | 41 | 41 |
| Rough Carpentry | 40 | 31 |
| Finish Carpentry | 8 | 5 |
| Baking | 33 | 20 |
| Tailoring | 2 | 2 |
| Dressmaking | 8 | 8 |
| Cookery | 2 | 2 |
| Building Wiring | | |
| Electrician | 11 | 4 |
| Automotive | 9 | 0 |
| TOTAL | 154 | 113 |

Faculty and Staff Development

The Head of Office is designated as the Executive Dean. There are 72 regular employees; 46 faculty, 19 support staff, six contractual workers, and one volunteer teacher. Out of the 46 faculty members, 12 are currently pursuing higher degrees

mostly on their own. Only Mr. Felicisimo Bugaoisan is enjoying the study under the Magna Carta for Teachers. Faculty and staff are encouraged to attend trainings, seminars and workshops in their line of specialization. For 2003, several faculty and staff attended a total of nine seminars and workshops.

Extension, Research and Infrastructure



Bokod Campus

Instruction

Enrolment The total enrolment was 356, distributed as follows: Bachelor of Science in Industrial Education 134; Bachelor of Science in Industrial Technology 141, and Bachelor of Elementary Education 81. Enrolment increased by an average of 3.5% from SY 2002-2003. In terms of the individual degree, enrolment in BS Industrial Education decreased by 25.56%, but those in BS Industrial Technology and Elementary Education increased by 29.36% and 47.27% respectively.

Graduates. There were 54 graduates in the baccalaureate degrees being offered. Of these 54 graduates, 41 are graduates of the Bachelor of Science in Industrial Education and 13 of the Bachelor of Science in Industrial Technology. The number of graduates decreased from that in 2002 by 28 %. The greater decline was in the number of BS Industrial Technology graduates, which decreased by 62.86%.

Performance in Licensure Examination

Thirty four graduates of the Bachelor of Science in Industrial Education took the Licensure examination for teachers in 2003, and 11 (32.3%) passed.

Student Scholarship

The scholarships availed of by 66 students in the different baccalaureate degree are the barangay scholarship (62.12%), NCIP grant (25.76%), PDMSASP grant (3.03%) , and Municipal scholarship (9.10%).

Highlights of other accomplishments

- Opening of the school canteen
- Improvement of the school water system
- Purchase of 111 copies of reference books
- Participation to Provincial Agro-Industrial Fair in November 17-21, 2003
- Implementation of income-generating projects were implemented resulting in an income of Php 942, 192.00



A Forward Outlook

Meeting Challenges Head-On

The BSU Medium-Term Plan 2004 to 2007 embodies what the University intends to achieve in the next four years. In a nutshell, the plan is for the University to steer closer to the realization of the vision. It will determinedly set out to meet all challenges, keeping in mind that success is close to those who persevere.

GOALS:

- To provide education that will enable graduates to become competitive.
- To generate and disseminate new knowledge and technologies that promote sustainable resource development and enrich the academic programs of the University.
- To strengthen and enhance institutional capability for generating revenue towards self-reliance.
- To establish competent and effective services geared towards efficiency and economy.

OBJECTIVES:

To have...

- Updated curricular offerings
- Globally competitive graduates
- Competent faculty and staff
- Quality, responsive and functional research and extension services
- Efficient and effective resource utilization and management
- Shared values and teamwork in the workplace
- Viable income generating projects
- State-of-the-art infrastructure and facilities
- Policy support to development

The specific strategies to reach the goals and objectives are:

Academic Affairs

1. Rationalize University degree and Non-degree programs exploring possibilities to develop new and innovative programs and academic units.
2. Strengthen research and extension capability of colleges by developing support mechanisms.
3. Encourage Colleges/Institutes to create trust fund through Income Generating Projects (IGP) to be used for Representation and Travel Allowance (RATA), purchase of laboratory equipment and miscellaneous expenses
4. Evaluate and update Academic Policies to address perennial problems of faculty workload and equivalent research, extension and administrative load.
5. Develop MIS for faculty and Students and explore integration of ICT into curricular programs.
6. Rationalize University staffing pattern and Initiate development of college/institutes faculty, development plans in line with the University thrust.
7. Review Student Code of Conduct and encourage consultation between administration and students to articulate relevant issues.
8. Strengthen support to the culture and arts program of the University in recognition of its uniqueness, and to promote ethnic awareness.
9. Develop security plans to insure integrity of students' records, and to prevent the use of illegal drugs.
10. Develop pro-active student services.

Research and Extension

1. Strengthen existing local research institutes and create a research and development center for semi-temperate vegetables.
2. Fully operationalize research and extension database management.
3. Institutionalize Planning, Monitoring and Evaluation for research and extension programs
4. Patent BSU-generated technologies for commercialization.
5. Integrate research and extension agenda with the regional and national development plans.
6. Conduct basic, strategic, applied and socio-economic and policy-oriented research programs on highland vegetable, fruits, ornamentals, agro-forestry, rice, livestock and environmental entrepreneurship.
7. Promote paradigm-shift towards technology commercialization.
8. Strengthen existing technology information/dissemination programs.
9. Update and package developed technologies.
10. Upgrade existing research and extension facilities.
11. Develop capabilities of researchers and extension staff.
12. Strengthen partnership with local, regional, national and international agencies/organizations.
13. Institutionalize sisterhood accord on research and extension with other local and foreign SUCs.

Administration

1. Develop a criteria for budget allocation for all sectors
2. Continuous personnel development
3. Periodic reshuffling of personnel
4. Systematize annual work plan schedule
5. Implementation of university policies
6. Centralized communication flow
7. Develop Manual of Administrative Operation

8. Efficient and effective delivery of services
9. Objectivity in rating employees
10. Strict implementation of government rules and regulations
11. Institutionalization of outside funded researches
12. Comprehensive land development program and titling of the reservation

Production

1. Production cum research of quality planting materials
2. Greenhouse commercial cutflower production
3. Setting-up of cutflower demonstration area
4. Establishment of consistent source of high valued vegetables
5. Establishment of greenhouse Open Field (900 sq.m. continuous cropping
6. Improved networking and linkages through identification of SUCs for product exchange, direct suppliers for raw materials, and negotiation with institutional/industry markets for finished products
7. Product promotion through advertisement of catering services and other production services to NGO, government agencies and general public and attendance to Trade Fairs by DTI
8. Expansion of the existing IGP
9. Expansion of poultry project
10. Expansion of swine project
11. Streamlining of IGPs
Operationalization of ICT services through the Internet and Network Services and Training Course Programs
12. Establishment of new projects and for integration in the land use master plan
13. Development and improvement of BSU Food Products
14. Development of "Nature Park" products
15. Continuation of CHET STAP Program
16. Trainings for UBA Personnel
17. Continuation of existing projects.

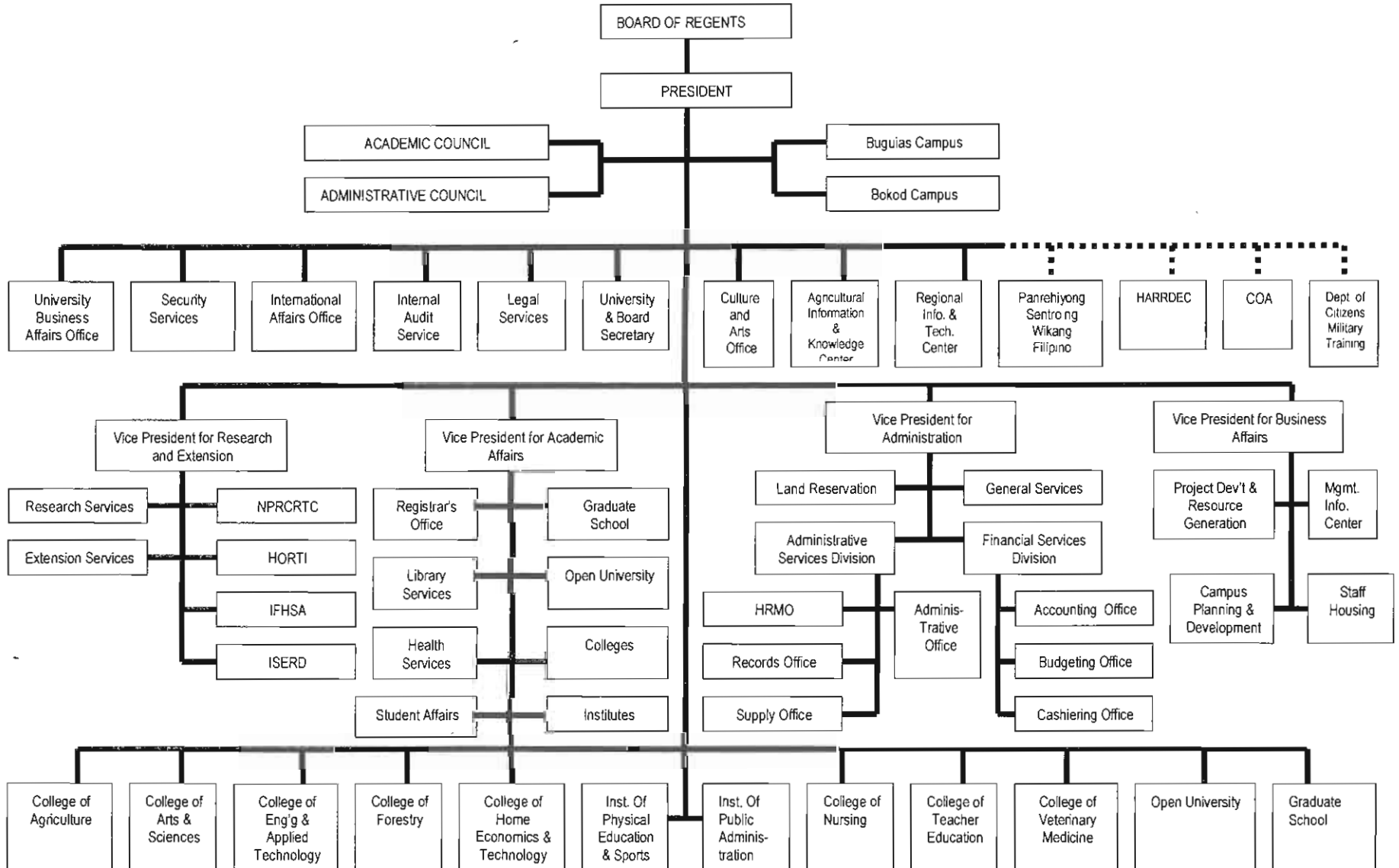
BOARD OF REGENTS

| | |
|--|--------------------------|
| <p>HON. ESTER A. GARCIA Chairperson, Commission on Higher Education (Until May 2003)</p> | <p>Chair</p> |
| <p>HON. ROLANDO R. DIZON Chairperson, Commission on Higher Education (Effective June 2003)</p> | <p>projects</p> |
| <p>HON. CIPRIANO C. CONSOLACION President, Benguet State University (Until June 2003)</p> | <p>Vice Chair</p> |
| <p>HON. ROGELIO D. COLTING President, Benguet State University (Effective July 2003)</p> | |
| <p>HON. FRANCIS N. PANGILINAN (Represented by Atty. RABINDRANATH QUILALA) Chair, Senate Committee on Education</p> | <p>Member</p> |
| <p>HON. HARLIN CASTILLO-ABAYON (Represented by: Dr. ROLETH PALACIO) Chair, Congressional Committee on Higher Education</p> | <p>Member</p> |
| <p>HON. JUAN B. NGALOB Regional Director, National Economic Development Authority</p> | <p>Member</p> |
| <p>HON. FAUSTINO K. MASLAN Regional Director, Department of Agriculture- CAR</p> | <p>Member</p> |
| <p>HON. BEN D. LADILAD Director, Department of Science and Technology (Until September 2003)</p> | <p>Member</p> |
| <p>HON. MACARIO D. CADATAL President, BSU Faculty Club (Until May 2003)</p> | <p>Member</p> |
| <p>HON. EDNA A. CHUA President, BSU Faculty Club (Effective September 2003)</p> | <p>Member</p> |
| <p>HON. FELIPE S. COMILA President, BSU Alumni Inc.</p> | <p>Member</p> |
| <p>HON. ADAMSON LABI President, Supreme Student Council (Until May 2003)</p> | <p>Member</p> |
| <p>HON. DAKILA PADUA President, Supreme Student Council (Effective September 2003)</p> | <p>Member</p> |
| <p>GRACE T. BENGWAYAN University and Board Secretary</p> | |

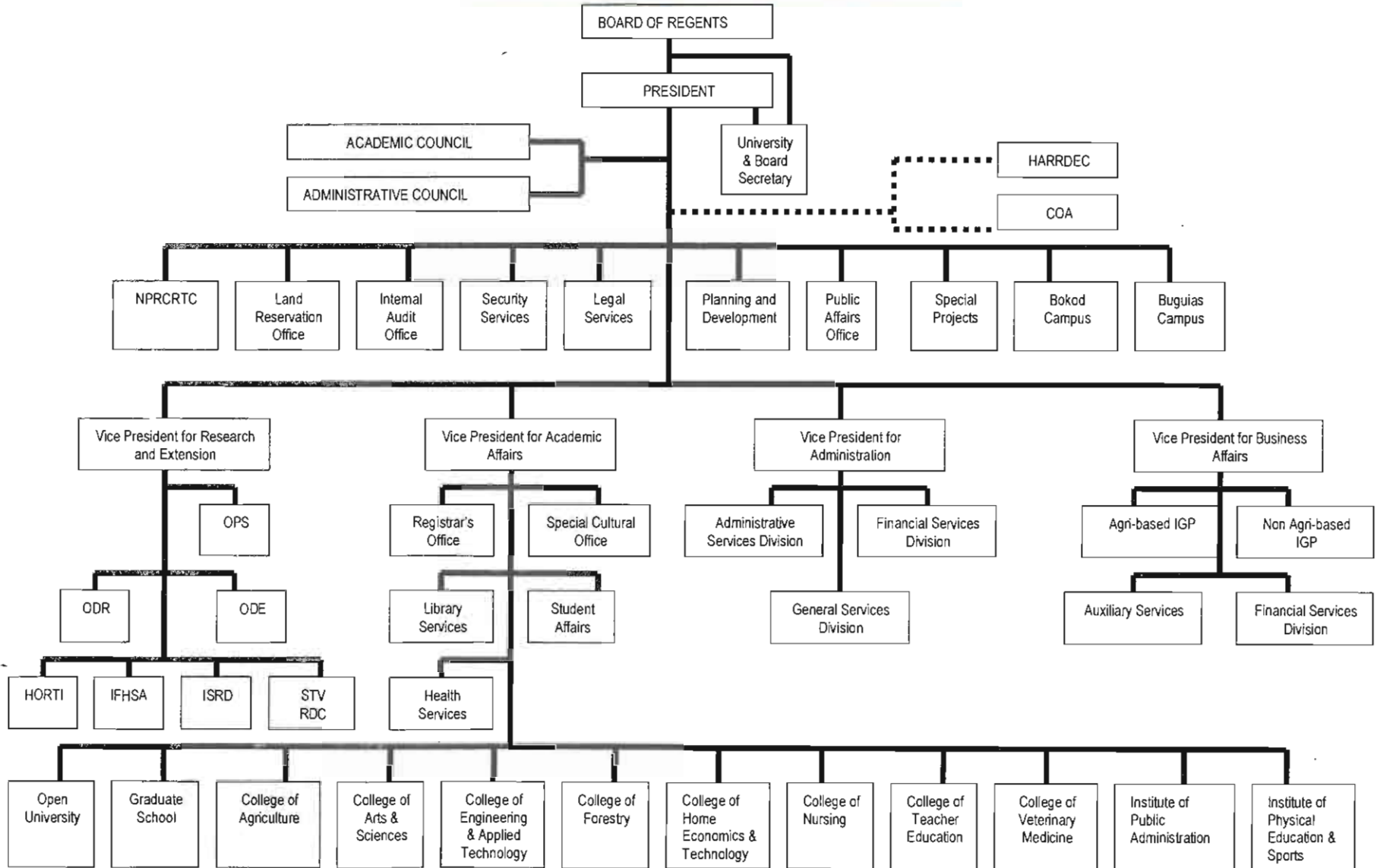
ADMINISTRATIVE COUNCIL

| POSITION | Up to June 2003 | From July 2003 |
|---|--------------------------|--------------------------|
| CHAIR | | |
| President | CONSOLACION, Cipriano C. | COLTING, Rogelio C. |
| VICE CHAIR | | |
| University Vice President | BAWANG, Franco T. | BAWANG, Franco T. |
| MEMBERS | | |
| Chief, Budget Office | ALAGAO, Ludivina O | ALAGAO, Ludivina O. |
| Director, Horti Research & Training Institute | ALIPIT, Percival B | ALIPIT, Percival B. |
| Chief, Legal Services Office | ANGIWAN, Matias C., Jr | ANGIWAN, Matias C., Jr |
| Chief, Motor Pool | ANTONIO, Samson S. | ANTONIO, Samson S. |
| Director, Open University | BAGANO, Juliet P | BAGANO, Juliet P. |
| President, BSUNTA | BANIWAS, Tranquilino | BANIWAS, Tranquilino |
| University/Board Secretary V | BENGWAYAN, Grace T | BENGWAYAN, Grace T |
| Chief, Internal Audit System (IAS) Office | BOLINTO, Violeta B | BOLINTO, Violeta B |
| Vice President for Academic Affairs | BULIYAT, MARCOS C. | CALORA, Feliciano, Jr. |
| President, Faculty Club | CADATAL, Macario D. | CHUA, Edna A |
| Dean, College of Forestry | TACLOY, John G. | PARAO, Marissa |
| Director, University Library Services | CLARAVALL, Nora J. | CLARAVALL, Nora J. |
| Chief, Property & Supply Mgmt Office | COILAN, Nicanra J. | COILAN, Nicanra J. |
| Dean, College of Veterinary Medicine | DIEGO, Ruth C. | CASTRENCE, Anatalia V |
| University Registrar | DUGAT, Virginia R. | COLTING, Lita M. |
| Director, ISRD | TAGARINO, Darlyn D. | DAGUPEN, Marie Klondy T. |
| Special Assist for Community & Alumni Affairs | DANGWA, Olga C. | DANGWA, Olga C. |
| Chief, Human Resource Management Office | ESTEBAN, Emilia M. | ESTEBAN, Emilia M. |
| Chief, Medical and Dental Services | FORMARAN, Villa L. | FORMARAN, Villa L. |
| Dean, College of Nursing | CAWAON, Florence C. | GASCON, Grace A. |
| Dean, Graduate School | GARIN, Dominador S. | GARIN, Dominador S. |
| Director, NPRCRTC | SALDA, Violeta B. | GAYAO, Betty T. |
| Director, Publication and Media Services | JACALAN, Gilda B. | JACALAN, Gilda B. |
| Director, General Services | LAPICTO, Eladio O. | LAPICTO, Eladio O. |
| Director of Research | | LAUREAN, Carlito P. |
| Director, Institute of Public Administration | COMILA, Felipe S. | LEE, Gloria R. |
| Chief, Cashiering Office | LIMPIN, Oscar B. | LIMPIN, Oscar B. |
| Chief, Records Office | LIMPIN, Victoria L. | LIMPIN, Victoria L. |
| Dean, College of Arts and Sciences | CHUA, Edna A. | LUBRICA, Joel V. |
| Dean, College of Teacher Education | LUBRICA, Percyveranda A | LUBRICA, Percyveranda A |
| Director, Inst. of Highland Farming Systems & Agro-forestry | MADDUL, Sonywright B. | LIGAT, Julio S. |
| Vice President for Research & Extension | COLTING, Rogelio D. | MADDUL, Sonywright B. |
| Dean, College of Agr'l Eng'g & Technology | MACASIEB, Genaro W., Jr | MACASIEB, Genaro W., Jr |
| Director, Regional Information & Technology Center | MACASIEB, Zyla C. | MACASIEB, Zyla C. |
| Director, Office of Student Affairs | MINA, Wilfredo B. | MINA, Wilfredo B. |
| Director, Extension Services | MULA, Rosana P. | MULA, Rosana P. |
| Chief, Administrative Services Division | RAMOS, Estrella A. | RAMOS, Estrella A. |
| Chief, Accounting Services | RAPUSO, Mary Joy S. | RAPUSO, Mary Joy S. |
| Director, Institute of Physical Education | RIMANDO, Teofilo | RIMANDO, Teofilo |
| Dean, College of Agriculture | PADUA, Danilo P. | SOLIMEN, Julia A. |
| Dean, College of Home Econ & Tech | AVILA, Jane K. | SOMYDEN, Ma. Corazon A. |
| Director, HARRDEC | TANDANG, Leoncia L. | TANDANG, Leoncia L. |
| Vice President for Planning & Development | MERESTELA, TESSIE M. | TAGARINO, Darlyn D. |
| Director, Land Reservation Office & President, BSUTEA | TIPAYNO, Alfredo C. | TIPAYNO, Alfredo C. |
| Chief, Finance Division | VICTOR, Priscilla P. | VICTOR, Priscilla P. |
| Director, Sentro Ng Wikang Filipino | VICTOR, Florencia C. | VICTOR, Florencia C. |
| ROTC Commandant | | |
| Resident Auditor (COA) | WILLIS, Mary D. | WILLIS, Mary D |
| Editor-in-Chief, MC | BASITAN, Ilene S. | BASITAN, Ilene S. |
| SSC President | LABI, Adamson F. | PADUA, Dakila |
| Executive Dean, Buguias Campus | COTIW-AN, Basito S. | COTIW-AN, Basito S. |
| Superintendent, Bokod Campus | PANANGON, Albert B. | PANANGON, Albert B. |

BENGUET STATE UNIVERSITY ORGANIZATIONAL STRUCTURE



BENGUET STATE UNIVERSITY ORGANIZATIONAL STRUCTURE (Proposed)



Academic Programs

Graduate Degree Programs

- Doctor of Education in Educational Management
- Doctor of Education in Educational Management
- Doctor of Education in Educational Management
- Master of Arts in Applied Statistics, Chemistry, English as a Second Language, Filipino as Second Language, General Science, Home Economics, Physics, Physical Education, Social Studies, and Technology & Home Economics
- Master of Arts in Education, major in contextualized Instruction, Educational Administration and Supervision, Elementary Education, and Guidance and Counseling
- Master of Forestry in Silviculture, and Watershed Management
- Master in Public Administration
- Master of Resource System Management
- Master of Science in Agricultural Economics, Agricultural Education, Agronomy, Animal Science, Biology, Entomology, Extension Education, Forestry, Horticulture, Plant Pathology, Rural Development, and Soil Science
- Master of Science in Mountain Engineering (in coordination with SLU and BCF)

Postsecondary Non-degree Program

- Diploma in Agro-forestry (DAF)
- Forest Ranger Certificate Course
- Certificate in Basic Automotive Technology
- Certificate in Advanced Automotive Technology

Special Courses

- Japanese Functional English and Experiential Learning Course (JFEELC)
- BSU-SNU Functional Intensive English Training Program (FIETP)

Undergraduate Degree Programs

- Bachelor of Science in Agriculture (BSA)
- Bachelor of Science in Agribusiness (BSAB)
- Bachelor of Science in Development Communication (BSDC)
- Bachelor of Science in Applied Statistics (BSAS)
- Bachelor of Science in Environmental Science (BSES)
- Bachelor of Science in Information Technology (BSIT)
- Bachelor of Science in Agricultural Engineering (BSAEng'g)
- Bachelor of Science in Forestry (BSF)
- Bachelor of Science in Home Economics (BSHE)
- Bachelor of Science in Nutrition and Dietetics (BSND)
- Bachelor of Science in Entrepreneurial Technology (BSET)
- Bachelor of Science in Nursing (BSN)
- Bachelor of Elementary Education (BEE)
- Bachelor of Secondary Education (BSE)
- Bachelor of Science in Agricultural Education (BSAE)
- Doctor of Veterinary Medicine (DVM)

Postgraduate Non-degree Programs

- Diploma in Physical Education
- Diploma in Public Administration
- Certificate in Public Administration

Pre-baccalaureate programs

- Secondary Laboratory School
- Elementary Laboratory School
- Early Childhood Development Program

Benguet State University

La Trinidad, Benguet 2601

Tel: (074) 422-2127 Fax: (074) 422-2401

Website: <http://www.bsu.edu.ph>