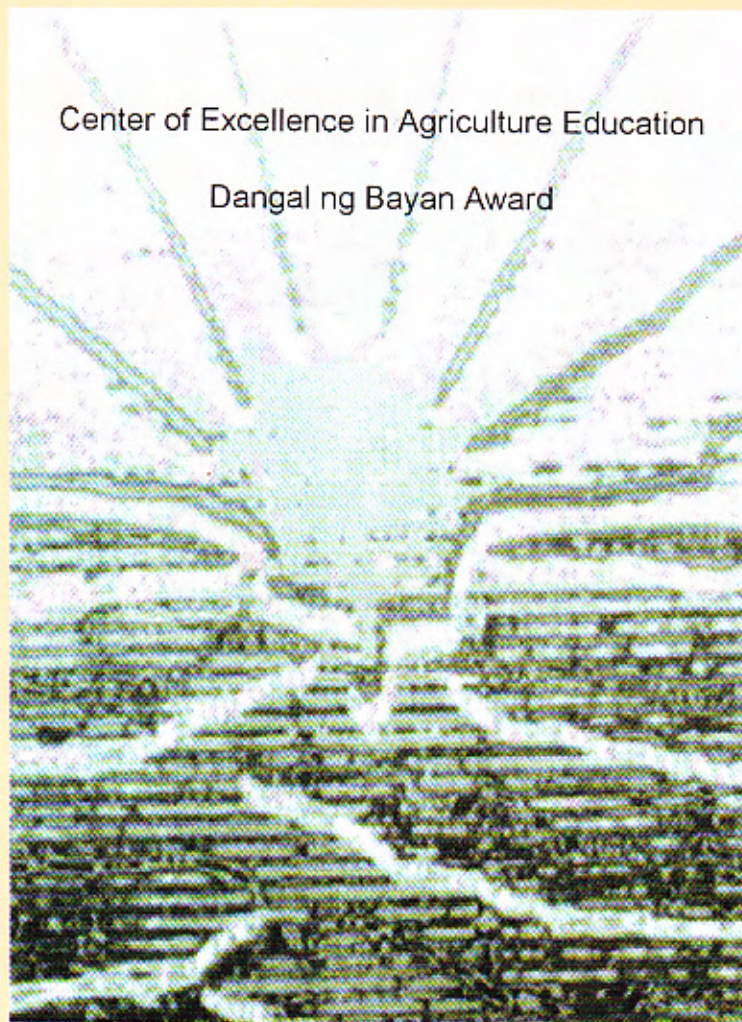


2000 ANNUAL REPORT

Center of Excellence in Agriculture Education

Dangal ng Bayan Award



BENGUET STATE UNIVERSITY

2601 La Trinidad, Benguet

PHILIPPINES

www.bsu.edu.ph




FOREWORD

The University is situated in the marshy valley floor of La Trinidad, Benguet, some five kilometers north of Baguio City. It is enjoying a semi-tropical climate that offers conducive learning environment. It offers degree and non-degree courses in agriculture, forestry, education, arts, sciences, information technology and other related fields. There are 542 personnel, 48% of whom are holding academic ranks. It can be accessed in the internet at URL www.bsu.edu.ph.

In 2000, it was chosen as one of the Centers of Excellence (COE) for Agriculture Education under the Agriculture Subsystem by the Commission on Higher Education. In response to the challenges of being a COE, the University has ushered in the new millennium with various significant achievements in its academic, research, extension and production programs.

This report summarizes the humble accomplishments of the University that were made possible through good human relations and teamwork and unending support from the national government.


CIPRIANO C. CONSOLACION
President

University Mandate

The Benguet State University shall provide graduate and undergraduate courses in the arts, sciences, humanities, professional fields in agriculture, natural sciences, technology and other technical and professional courses that may be determined and deemed proper by the Board of Regents. It shall also promote research, extension, agribusiness and advanced studies and progressive leadership in its fields of specialization.

Vision

The Benguet State University is a dynamic center of excellence and a model educational institution in a sustainable environment where moral values, culture and arts thrive.

Mission

The Benguet State University is committed to propel development through its fourfold functions: Instruction, Research, Extension and Production. To realize this, the University shall have its major programs accredited, strengthen its institutional capability, empower its faculty, staff and students and broaden its linkages and networks.

Goals

- Quality and relevant curriculum
- Globally competitive graduates
- Enriched learning environment
- Empowered faculty with improved competence in facilitating and evaluating learning
- Quality research and functional extension and community service
- Efficient resource utilization and high productivity

Contents

iv	Executive Summary
----	-------------------

1	Instruction
	Academic Programs
	Enrolment and Graduation Trends
	Licensure Examination Performance
	University Library Services
	Student Activities and Scholarships
	Faculty Profile
	AACUP Accreditation Status

10	Research and Development
	Completed and On-going Researches
	Research Highlights and Findings
	Awards
	Facilities and Equipment
	Strategic Networking

15	Extension and Community Services
----	----------------------------------

17	Production
----	------------

19	Internal Governance
	Administration
	Personnel Profile
	Staff Development
	Awards
	Employee Benefits
	Linkages
	Budget
	Infrastructure, Equipment and Facilities

27	Appendices
----	------------

Production. The University generated PhP 19M from the income-generating projects (IGP), student fees and land use and facilities rentals. Generating the highest income was the Food Processing Project one of the IGPs, served as on-the-job practicing site for the students of the University and University-linked institutions. Some units or colleges generated income by establishing a special school or pre-school or conducting licensure examination review.

Internal governance. Dr. Ester A. Garcia, the CHED Commissioner, took over as Chairman of the Board of Regents of the University effective November 2000. The Office of the Director for Planning and Development was upgraded and remained the Office of the Vice-President for Planning and Development. The Action Plan for 2001 and Updated University Development Plan for 2001-2004 were formulated and adopted by the University.

Of the 542 regular employees, 258 are faculty members; 26, research personnel; and 258, support personnel. Eighteen faculty members obtained advanced degrees in their field of specialization and 17 teachers or non-teachers participated in foreign conferences, seminars and trainings. The employees availed of monetary and non-monetary benefits, in accordance with existing rules and regulations.

For capability building and improvement, resources were sourced out and developed through networking and mutual understanding. New institutional linkages were forged and ties were further reinforced to sustain existing linkages. Some of these linkages are with SEAMEO SEARCA, ACIAR, UPLB, PIUC, PhilRice, CIP, UPWARD, DA, DOST, DILG and other similar agencies that support research and extension projects and capability building.

Awards. The College of Agriculture (CA) was chosen as one of the Centers of Excellence (COEs) in Agriculture Education in the country by the Commission on Higher Education (CHED). The University President, Dr. Cipriano C. Consolacion, received the 2000 Dangal Ng Bayan Award from the Civil Service Commission. Other awards received by faculty members, support staff and students include awards in scientific conferences and local and national competitions, achievement award in specific field of specialization, and civil service awards.



Executive Summary

The programs of the Benguet State University are rooted on its avowed vision, mission, and goals. The aim of the University for excellence is expressed in this year's array of major accomplishments in instruction, research, extension and production.

Instruction. Ph.D. in Agronomy and Certificate in Public Administration are the new approved programs that were offered effective 1st Semester, SY 1999-2000. The enrolment of 7,230 the first semester of SY 1999 – 2000 increased to 7653, this school year. Among the undergraduate degree programs, the BS Agriculture consistently showed the most number of student-enrollees.

A total of 1213 graduates marched during the 75th Collegiate Commencement Exercises. The BS agriculture had a total of 148 graduates, the highest number of graduates in the bachelor's degree. Among the graduates, one was *magna cum laude* and 16 were *cum laude*. Sen. Sergio R. Osmena, III and Raul S. Roco were conferred honorary degree of *Doctor of Laws*. The overall performance of graduates in Licensure Examinations was commendable. For. Brigido Quitano (BS Forestry 2000) placed 8th in the Forestry Licensure Examination.

The University is now on line and can be accessed at URL www.bsu.edu.ph. It is preparing for the full automation of the library and student enrollment systems. The University had 61 recognized student organizations and increased the number of institutional scholarships to students. Most of the 258 faculty members are MS/MA degree holders.

Research. Out of the 45 researches implemented, eight were completed and 26 were on-going. The University funded 19 of these; other government agencies nine; international development agencies three; and private entities, 14. The researches centered on crop improvement, management practices, protection, postharvest practices, marketing and policy studies, farming systems, among others.

A new lowland potato variety, "Raniag", is being recommended for highland cultivation. New potato product lines such as cupcake, puto, and cracklets were developed. Suitable sweetpotato varieties for chip processing were identified, and bread (bun) made of 40% sweetpotato mash was accepted by consumers. Several varieties of pole and bush beans, garden peas, tomatoes and strawberries were tested for high yield and good quality produce.

Flavobacterium sp. as a biocontrol agent is comparable to the efficacy of standard fungicides against chrysanthemum white rust. Three other species of leafminers that are associated with the host plants are identified as follows : *L. trifoli* (Burgess), *L. sativae* (Blancard) and *L. chinensis* (Kato).

Extension. Extension and community services were carried out as planned and in cooperation with other development government and non-government organizations interested in the same area of concern. The continuing regular extension programs are BSU on-the-air, BSU sa barangay, participatory technology adoption program (PTAP), technology packaging and publications, and training courses/ technical assistance. The College of Nursing came up with Reproductive Health Program, College of Home Economics and Technology, nutri-clinic and BIDANI; Institute of Physical Education and Sports, Dance Instruction and Physical Fitness; College of Veterinary Medicine, Pig Dispersal and College of Forestry, Seed Dispersal.

INSTRUCTION

Academic Programs

The University sustained the offering of the different degree and non-degree programs. Some of the developments made in the academic programs within the year in response to the challenging needs of the new millennium, are as follows:

- ❖ The College of Agriculture through the Graduate School offered PhD Agronomy (BOR Res. No. 970, s. 2000);
- ❖ The Doctor of Veterinary Medicine (BOR Res. No. 951, s. 2000) was revised in accordance with the minimum requirements set by the Technical Panel for Agricultural Education (TPAE), Commission on Higher Education (CHED) and Accrediting Agency of Chartered Colleges and Universities of the Philippines (AACCUP);
- ❖ The Institute of Public Administration implemented the offering of the Certificate of Public Administration (BOR Res. No. 474, s. 1992);
- ❖ The College of Teacher Education offered different areas of concentration in Bachelor of Elementary Education (BOR Res. No. 953, s. 2000) and included additional subjects in Bachelor of Secondary Education and Bachelor of Elementary Education (BOR Res. No. 954, s. 2000); and
- ❖ The College of Home Economics and Technology revised the Certificate in Home Management Arts to a 2-year Associate in Entrepreneurial Technology.

Enrollment and Graduation Trends

- ❖ A total of 7,653 students in all levels enrolled in the University during the first semester, school year 2000-2001;
- ❖ Among the undergraduate degree programs, the BS Agriculture consistently showed the most number of student-enrollees;
- ❖ The BS Development Communication and BS Information Technology are on their second year of offering;
- ❖ Enrollment increased in 2000-2001 except in the case of the Open University;
- ❖ The University graduated 1,240 students, 52 of whom were from the graduate programs; 720, undergraduate programs; 142, non-degree programs; 54, non-formal education and basic education 326;
- ❖ The BS Agriculture had a total of 148 graduates, the highest number of enrolled students;
- ❖ Among the graduates, one was *magna cum laude* and 16 were *cum laude*; and
- ❖ The University conferred honorary degree of *Doctor of Laws* to Senator Sergio R. Osmeña, III and Senator Raul S. Roco during the 75th Commencement Exercises in recognition of their contribution to national development and public service.



University Charter Day, 12
January 2000



Panagbenga February 2000

Enrolment in the different academic programs
school year 1999-2000

Program /Course	Summer	1 st Sem	2 nd Sem
Graduate Programs			
PhD/ EdD	64	129	126
MS/MA/MPA	364	554	551
<i>Sub-total</i>	428	683	677
Undergraduate Degree Program			
BS Agriculture	283	1186	1083
BS Agribusiness	41	166	168
BS Agricultural Education	76	256	228
BS Agricultural Engineering	54	246	200
BS Animal Technology	16	13	15
BS Applied Statistics	21	74	68
BS Development Communication	2	74	62
BS Environmental Science	101	323	280
BS Forestry	44	299	262
BS Information Technology	1	80	78
BS Home Economics	70	416	413
BS Nursing	3	262	256
BS Nutrition and Dietetics	33	174	162
B Elementary Education	104	738	744
B Secondary Education	186	796	751
Doctor of Veterinary Medicine	44	335	318
<i>Sub-total</i>	1081	5438	5088
Open University			
Master's Degree	0	119	130
Diploma Course	0	10	25
<i>Sub-total</i>	0	129	155
Non-Degree Program			
Diploma in Physical Education	3	20	19
Diploma in Agroforestry	30	88	74
Forest Ranger Certificate	28	0	73
Assoc. in Entrepreneurial Tech	0	106	93
Auto Mechanics	0	32	34
Cross Enrollees	1	12	25
<i>Sub-total</i>	62	258	318
Basic Education			
Elementary Education	0	717	717
Secondary Education	0	557	549
<i>Sub-total</i>	0	1274	1266
Total	1571	7653	7504

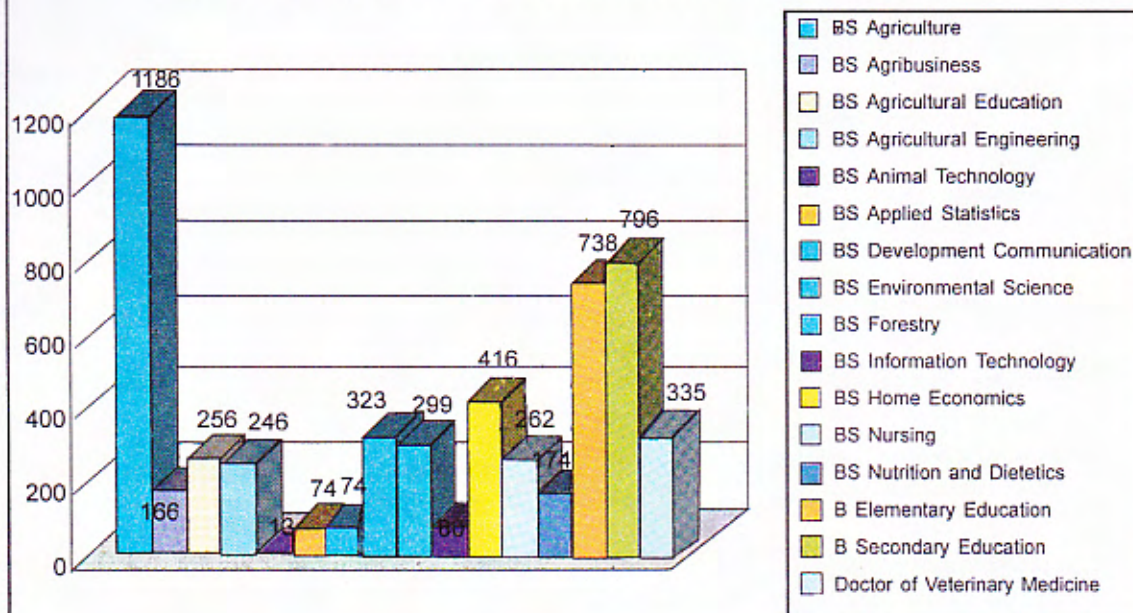


Orientation of freshmen

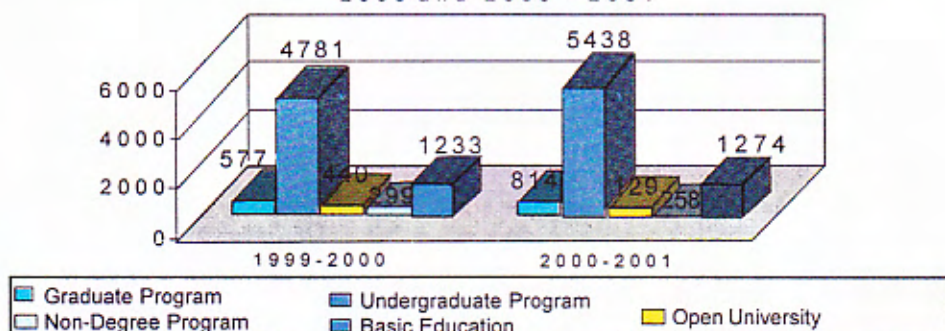


*Street dancing during the
University Charter Day*

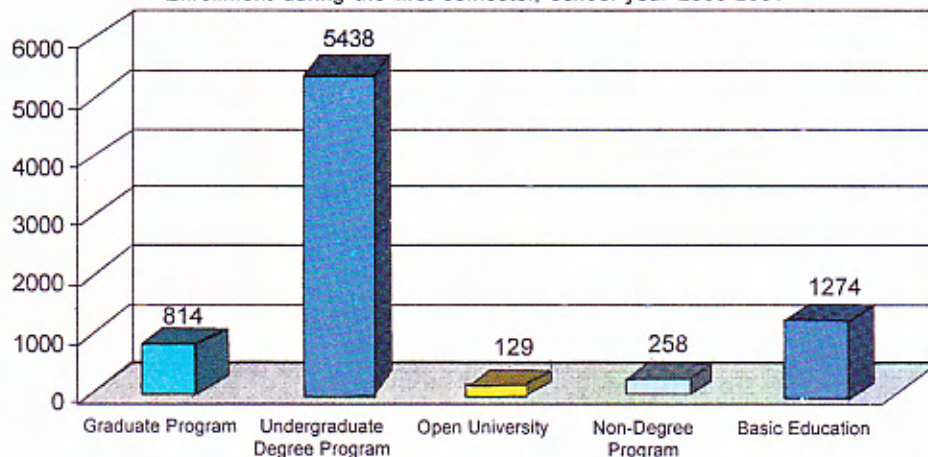
Enrollment in the BS programs during the first semester, school year 2000 - 2001



Enrollment trend during the first semester school year 1999 - 2000 and 2000 - 2001

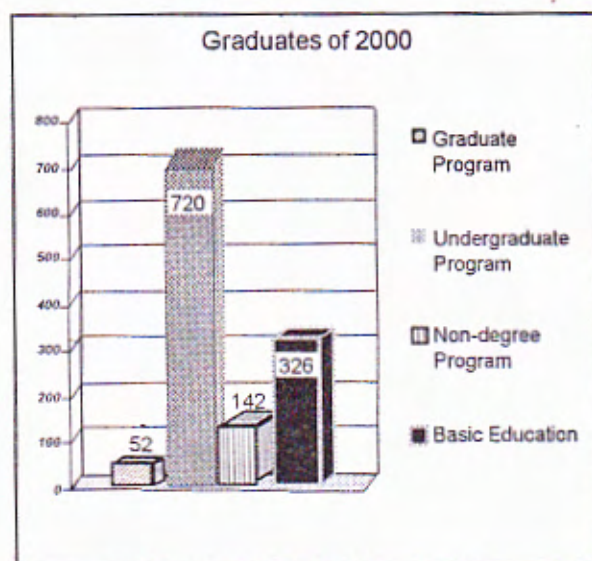


Enrollment during the first semester, school year 2000-2001



Graduates of the different programs

Program/ Course	Total Graduate
Graduate Program	
PhD/EdD	16
MS/MA/MPA	36
<i>Sub-total</i>	52
Undergraduate Degree Program	
BS Agriculture	148
BS Agribusiness	25
BS Agricultural Education	47
BS Agricultural Engineering	38
BS Animal Technology	27
BS Applied Statistics	0
BS Development	0
Communication	
BS Environmental Science	56
BS Forestry	49
BS Information Technology	0
BS Home Economics	55
BS Nursing	20
BS Nutrition and Dietetics	37
B Elementary Education	100
B Secondary Education	106
Doctor of Veterinary Medicine	12
<i>Sub-total</i>	720
Non-Degree Program	
Diploma in Physical Education	3
Diploma in Agroforestry	11
Forest Ranger Certificate	22
Home Management Arts	37
Advanced Auto Mechanics (non-formal)	7
Advanced Auto Technology (post graduate)	5
Basic Automotive Technology (post graduate)	57
<i>Sub-total</i>	142
Non-Formal Education	
Functional Intensive English	
Training Course for Japanese	24
Functional Intensive English	
Training Course for Koreans	30
<i>Sub-total</i>	54
Basic Education	
Elementary Education	128
Secondary Education	117
<i>Sub-total</i>	326
Total	1240



Students of the College of Teacher Education (CTE)



The graduates of 2000

Honor graduates

Name	Degree	Honor
Basilig, Rosalie J.	BS Agriculture	<i>Cum laude</i>
Pedroche, Nordalyn B.	BS Agriculture	<i>Cum laude</i>
Candiao, Cranep D.	BS Environmental Science	<i>Cum laude</i>
Debad, Lureyn C.	BS Environmental Science	<i>Cum laude</i>
Balacwid, Ceasar L.	BS Agricultural Education	<i>Cum laude</i>
Agudo, Sandy O.	B Elementary Education	<i>Magna cum laude</i>
Busacay, Sola Grace B.	BS Elementary Education	<i>Cumlaude</i>
Pilas, Evelyn P.	BS Elementary Education	<i>Cumlaude</i>
Tibangay, Olivia B.	BS Elementary Education	<i>Cumlaude</i>
Abellera, Rhoda L.	B Secondary Education	<i>Cumlaude</i>
Corpuz, Beatriz R.	B Secondary Education	<i>Cumlaude</i>
Egangan, Elena B.	B Secondary Education	<i>Cumlaude</i>
Glaser, Rickynell M.	B Secondary Education	<i>Cumlaude</i>
Mejia, Alma E.	B Secondary Education	<i>Cumlaude</i>
Montemayor, Janet Lynn S.	B Secondary Education	<i>Cumlaude</i>
Pelingan, Joiseta T.	B Secondary Education	<i>Cumlaude</i>
Sagun, Lanie B.	B Secondary Education	<i>Cumlaude</i>



*Senator Raul S. Roco and Sergio R. Osmeña, III were conferred Doctor of Laws
honoris causa*

Licensure Examination Performance

- ❖ Nursing, Teacher Education and Home Economics licensure examination takers consistently showed higher Institutional passing rate than the National; and
- ❖ Mr. Brigido Quitano, a graduate of Bachelor of Science in Forestry in March 2000, placed 8th in the Forestry Examination.

Performance of graduates in licensure examination

Licensure Examination		Passing Rate (%)	
		Institutional	National
Agricultural Engineer		46.00	52.34
Dietician and Nutritionist		30.00	55.06
Forester		20.83	28.96
Home Economics	Elementary	73.07	54.80
	Secondary	62.50	42.56
Nursing	May 2000	85.70	50.83
	November 2000	100.00	48.44
Teachers	Elementary	94.19	39.00
	Secondary	79.55	35.70
	Agricultural	76.49	39.00
Veterinarian		47.00	46.31

University Library Services

- ❖ The University Library acquired physical resources that include print, non-print materials, hardware and software through purchase, donation and exchange;
- ❖ It acquired the Follett Circulation Plus software where bar coding is now being used for indexing books; and
- ❖ The library staff is being trained in preparation for a full automation of the library system.

Print and non-print materials acquired

Materials	Collection as of 1998	Acquired in 1999	Acquired in 2000	Total
Books	31,021	505	1493	33019
Journal & pamphlets	1,992	138	131	2261
Theses	7,257	655	1076	8988
CDROMS	24	57	5	86
Video Cassette Tapes	115	6	2	123



Library staff undergoes training for the Library automation



Newly acquired books and CD-ROMS

Library attendance statistics in 1998 to 2000

TYPE OF USERS	1998	1999	2000
Students	3,788	103,000	110,000
Faculty and staff	951	27,000	25,000
Outside researchers	372	38,000	45,000
Total	5,111	168,000	180,000

Student Activities and Scholarship

- ❖ There are 61 recognized student organizations that are coordinated by the Office of the Student Affairs (OSA);
- ❖ The students were given opportunities to join regional and national seminars and conferences by providing funding support; and
- ❖ The institutional scholarships offered by the University increased from 598 to 751.

Recognized student organizations

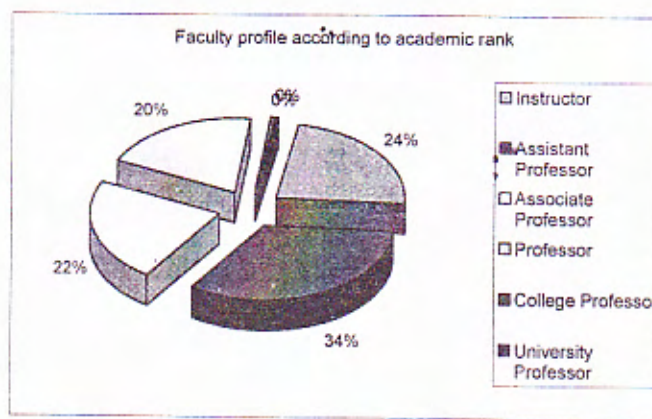
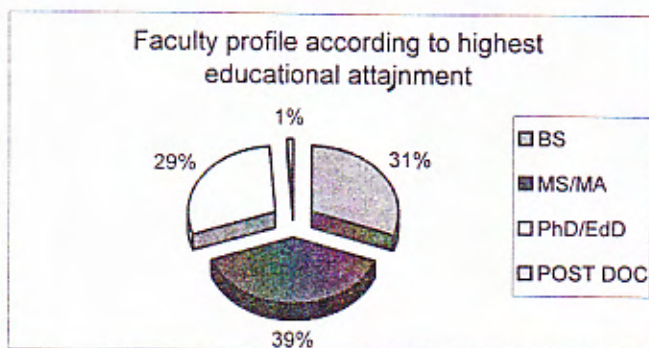
Organization	No.
Mandated	4
Non-affiliated	11
Religious	13
Athletic	3
Academic related	40

Scholarships/grants awarded to undergraduate and graduate students

SCHOLARSHIP/GRANT	1999-2000	2000-2001
Government Organizations	445	289
Private Organizations	50	52
Institutional (BSU)	598	751
International (USAID)	4	2
Total	1097	1094

Faculty Profile

- ❖ Ensuring quality education are 258 faculty members in the eight college and two academic institutes;
- ❖ 1% obtained post doctoral trainings; 31% are PhD degree holders; 39%, MS/MA, and 29%, BS degree; and
- ❖ According to faculty rank 1% is University and College Professor; 22%, Associate Professor; 34%, Assistant Professors; and 24%, Instructors.



Faculty members during the 75th Commencement Exercises

AACCUP Accreditation Status

- ❖ In the pursuit of quality education, the University pursues accreditation of its degree programs in accordance with the standards of AACCUP and TPAE; and
- ❖ The colleges, graduate school and academic institutes prepared the documents for the next visit of the AACCUP.

AACCUP accreditation status of the degree programs and graduate education

Program	Degree Program	Status	Duration/ Remarks
Agricultural Engineering	BS Agricultural Engineering	Accredited	07 January 1999 to 06 January 2002
Agriculture	BS Agriculture BS Agribusiness Management	Re-accredited	14 March 1999 to 13 March 2004
Arts and Sciences	BS Applied Statistics	Re-accredited	December 1997 to December 2002
Forestry	BS Forestry	Deferred	December 2000 to July 2001
Graduate Education	MS and PhD (Agriculture)	Accredited	December 1997 to December 2000/ on one year grace-period until December 2001
Home Economics and Technology	BS Home Economics BS Nutrition and Dietetics	Accredited	14 March 1998 to 13 March 2001
Nursing	BS Nursing	Re-accredited	18 November 1999 to 17 November 2004
Teacher Education	BS Agricultural Education B Elementary Education B Secondary Education	Re-accredited	18 November 1999 to 17 November 2004
Veterinary Medicine	Doctor of Veterinary Medicine BS Animal Technology	Re-accredited	14 March 1999 to 13 March 2004

RESEARCH AND DEVELOPMENT

Completed and On-going Researches

- ❖ The significant findings of R and D activities are the accomplishments of the various Research Institutes/ Centers and Colleges in the University. These are:
 - the Horticulture and Training Institutes (HORTI)
 - Institute of Highland Policy Studies and Socio-Economics Research and Development (IHPSSERD)
 - Institute of Highland Farming Systems and Agroforestry (IHFSFA)
 - Northern Philippines Root Crops Research and Training Center (NPRCRTC)
 - College of Agriculture (CA)
 - College of Veterinary Medicine (CVM)
 - College of Engineering and Applied Technology (CEAT)
 - College of Home Economics and Technology (CHET)
- ❖ In 2000, a total of 45 researches were conducted, of which 19 were funded by the University, nine by other government agencies, three by international development agencies, and the other 14 by private entities; and,
- ❖ Areas of concern centered on crop improvement, management practices, crop protection, postharvest practices, marketing and policy studies and farming systems.

Completed researches in 2000

Implementing Unit	Title of Research
CVM	❖ Defining Problems and Opportunities for Smallholder Pig Production in the Philippines
IHFSFA	❖ Establishment of Micro-hydro Power Projects in Selected Un-energized Areas in the Cordillera
	❖ Inventory and Cataloguing of Fisheries Resources of Amburayan River, Upper Reach, and Bued River
IHPSSERD	❖ Market Research and Development for Clean Vegetables
	❖ Production and Marketing of High Value Crops: Broccoli
NPRCRTC	❖ Potato Research and Development Program
	❖ Biological Control of Major Insect Pest of Rootcrops in the Cordillera
	❖ Rapid Propagation of Disease-Free Planting Materials of Potential Sweetpotato Varieties



Potato research



Clean vegetables production

On-going researches in 2000 (University-funded)

Implementing Unit	On-Going Research
CA HORTI	<ul style="list-style-type: none"> ❖ Quick Response Service (QRS) Research on Potato Leafminer ❖ Development of Market-Oriented Cropping Schemes for Vegetable Crops ❖ Integrated Pest Management (IPM) of Selected Vegetable Crops ❖ Tissue Culture Research and Development for Highland Crops ❖ Chayote Production, Processing, and Marketing Development Project ❖ Development and Piloting of Improved Varieties of Garden Pea ❖ Strawberry Varietal Development Program ❖ Biological Control of Phytophagous Mites Infesting Selected Crops in the Cordillera ❖ Vegetable Seed Production Technology Development
IHFSA	<ul style="list-style-type: none"> ❖ Integration/Evaluation of Different Hybrid and Native Animals in the Highlands for Agroforestry ❖ Ten Year Arabica Coffee Rehabilitation and Development Project in Benguet and Mt. Province
NPRCRTC	<ul style="list-style-type: none"> ❖ Isolation and Antibiotic Sensitivity Testing of Pathogenic Streptococci of Swine ❖ Design and Development of Root Crops Processing Equipment for Village Level Operation

On-going researches (external funding from the national and international agencies)

Funding Agency	Title of Research
CIP-UPWARD	<ul style="list-style-type: none"> ❖ Sweetpotato Snacks Food Processing Enterprise Development in Northern Luzon
DA-BAR	<ul style="list-style-type: none"> ❖ Fungal Hyperparasites and Bacterial Antagonists as Component of Integrated Disease Management Program for Chrysanthemum White Rust ❖ Breeding and Testing Vegetables for Mid and High Elevation Areas of the Philippines
DA-CARFU	<ul style="list-style-type: none"> ❖ Comprehensive Irrigation and Development Umbrella Program (CIRDUP)
IRRI	<ul style="list-style-type: none"> ❖ Rice Varietal Improvement for Cool Elevated Areas
NLARMRDZC, BENECO, and LGU PhilRice and DA-BAR	<ul style="list-style-type: none"> ❖ Towards Inland Aquatic Program in Asin (TILAPIA)
PIUC	<ul style="list-style-type: none"> ❖ Development of Rice Cool Tolerant Varieties ❖ Rice Key Commodity System
Tokyo University of Agriculture (TUA)	<ul style="list-style-type: none"> ❖ Socio-Economic Research
UPLB-CHE	<ul style="list-style-type: none"> ❖ Sustainability of Upland Vegetable Farming in the Philippines: A Case of Natubleng, Buguias, Benguet
UPLB-IPB	<ul style="list-style-type: none"> ❖ Barangay Integrated Development Approach for Nutrition Improvement (BIDANI) of the Rural Poor
UPLB-IPB and DA-BAR	<ul style="list-style-type: none"> ❖ Varietal Improvement of Highland Vegetable Crops ❖ Variety Collection and Seed Increase of Advanced Lines and Experimental Hybrids of Tomato



Garden pea



Chrysanthemum

Research Highlights and Findings

Researcher	Highlights and Findings
Bawang, F.T. and J.S. Ligat	<ul style="list-style-type: none"> • Either sand, compost, or soil could be used as fruit bedding to accelerate propagation of chayote. Alnus tree canopy is best for chayote production.
Colting, L.M.	<ul style="list-style-type: none"> • Identified three other species of leafminers associated with the host plants are <i>L. trifoli</i> (Burgess), <i>L. sativae</i> (Blanckard) and <i>L. Chinensis</i> (Kato).
Ganga, Z. N. et al.	<ul style="list-style-type: none"> • Potential clones for variety release include 3873177, 379706.34, IP84004.7, and IP81001.1. New lowland potato variety "Raniag" is being recommended for highland cultivation.
Padua, D.P.	<ul style="list-style-type: none"> • Successful crosses were made among cultivars, wild relatives, and between cultivars and wild relatives.
Quindara, H.L.	<ul style="list-style-type: none"> • New potato product lines such as cupcake, puto, and cracklets were developed. • Suitable sweetpotato varieties for chip processing were identified. • Bread (bun) made of 40% sweetpotato mash was accepted by consumers.
Tandang, L.L. et al.	<ul style="list-style-type: none"> • Pole snapbean B-21, CPV 18, HAV 66, HAV 71, HAV 81, and HAV 112 have high marketable yield and acceptable pod quality. Likewise, CPV 53, CPV 58, CPV 60 A, CPV 60 B, CPV 63, CPV 64, and CPV 66 are potential varieties. • Bush bean BBL 274, HAB 424, HAB 420, Derby, Torrent, and Landmark have high marketable yield and pod quality. • Three tomato lines were selected promising as salad variety. Another line was identified as promising market type. • Taichung, Chinese garden pea, and 89-001 have better quality pods and command higher price.
Toledo, P.E.	<ul style="list-style-type: none"> • Four t/ha lime is adequate for carrot. The use of Linuron at 1.5 kg ai/ha is effective in suppressing weed growth in carrot field resulting in high marketable yield. A four-day irrigation interval is sufficient for carrot production. • Application of 50 kg N/ha to bush snap bean "Gourney's Delight" is adequate to give high seed yield
Villanueva, L.M.	<ul style="list-style-type: none"> • The efficacy of <i>Flavobacterium</i> sp. is comparable to the efficacy of standard fungicides used against chrysanthemum white rust.

Awards

- ❖ Outstanding accomplishments in research in various fields gave distinguished awards to several of the researchers; and
- ❖ The awards were given by distinguished national awarding bodies.



Dr. Luciana M. Villanueva, Gerardo O. Ocfemia Outstanding Plant Pathologist

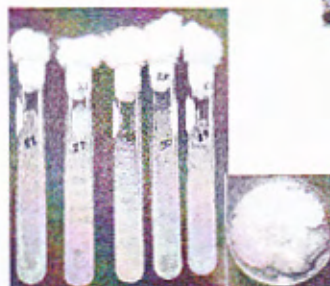


Best Poster Award

Recipient	Award	Awarding Agency
Atinyao, Marlene B.	Best Paper Award in Animal Nutrition	Philippine Society of Animal Science (PSAS)
Balcita, Manuel A.	PARRFI Professorial Chair	Philippine Agriculture and Resources Research Foundation, Inc. (PARRFI)
Ganga, Zenaída N.	Outstanding Research Manager	Philippine Association of Research Managers (PHILARM)
Padua, Danilo D.	PARRFI Professorial Chair Award	PARRFI
Perez, Jocelyn C. <i>et al.</i>	2 nd Prize – Paper Presentation on Development of Sustainable Potato Seed Production Scheme for the Philippine Highlands	Highland Agriculture and Resources Research Development Consortium (HARRDEC)
Tagarino, Darlyn D. <i>et al.</i>	<ul style="list-style-type: none"> 1st Prize – Poster Presentation on Market Research and Development for Clean Vegetables 2nd Prize – Poster Presentation on Profitability of Broccoli Production in Benguet 	HARRDEC
Villanueva, Luciana M.	Gerardo O. Ocfemia Outstanding Plant Pathologist	Philippine Phytopathological Society (PPS)



Paelomyces sp.



Verticillium sp.



BSU Potato lines

Facilities and Equipment

- ❖ The external funds generated through networking were spent to acquire several items of equipment for institutional enhancement. From the DA-BAR, 18 items were added to the existing information technology facilities to improve the knowledge process and documentation services. Eight other items were purchased in order to upgrade the biotechnology and seed storage laboratories;
- ❖ From the PIUC funds, various items were likewise obtained to improve laboratory facilities for the geographical information systems (GIS), soil science activities, and processing of BSU food product lines; and
- ❖ The maps of the experimental areas of Balili, Cabanao, and the Swamp, were revised. To maintain and protect these areas from environmental abuse, monitoring activities were regularized.

Strategic Networking

In pursuing its cooperative endeavor towards the implementation of the Agriculture and Fisheries Modernization Act (AFMA), the University has been an active partner of:

- ❖ The Department of Agriculture-Cordillera Administrative Region Field Unit (DA-CARFU);
- ❖ Cordillera Integrated Agriculture Research Center (CIARC); and
- ❖ Other government and nongovernment organizations such as the University of the Philippines at Los Baños (UPLB), PhilRice, the Department of Science and Technology (DOST), and a number of state colleges and universities within and outside the Region.

EXTENSION AND COMMUNITY SERVICES

The extension banner programs are continuing and are participated in by the different colleges and units of the University.

University extension banner programs

Regular Program	Accomplishments
BSU On -The – Air	<ul style="list-style-type: none"> Aired 26 topics on health issues. Airing ran from 5:20 to 5:30 A.M. on Mondays, Wednesdays, and Fridays at DZWT, Baguio City Tapped 20 resource persons from various colleges, institutes, and other organizations.
BSU Sa Barangay	<ul style="list-style-type: none"> Served six barangays in three municipalities of Benguet and La Union.
Participatory Technology Adoption Program (PTAP)	<ul style="list-style-type: none"> Five cooperators for the PTAP on passion fruit production in Atok, Benguet had their first harvest in November. Three cooperators for the PTAP on economic tree production in Atok and Sablan (Benguet) had already established their plantation. Two organizations and one farmer were beneficiaries for the PTAP on chrysanthemum/anthurium production. Two proposals for implementation in 2001 were approved for financing by the DA-CHARMP.
Technology Packaging And Publication	<ul style="list-style-type: none"> Produced some 15 information, education, and communication (IECs) materials availed of by about 1,030 persons.
Training Courses/Technical Assistance	<ul style="list-style-type: none"> Conducted and co-sponsored 28 training courses participated in by about 520 trainees.
Other activities	
1. BSU-Plastro Phils., Inc. Demo House On Drip Irrigation System	<ul style="list-style-type: none"> The construction of the plastic house is nearing completion and lighting and water systems installation will be finished in April 2001.
2. On-farm Demo on Semi-Temperate Crops in Doña Remedios Trinidad, Bulacan	<ul style="list-style-type: none"> The first trial on vegetable production was successful for snap beans and carrots. Other crops did not survive typhoon "Reming". Rose production was also demonstrated and the first budding yielded promising results.
3. BSU Technology Exhibits in various S & T Fairs held at the regional and national levels.	<ul style="list-style-type: none"> University Charter day National DOST NSTW Exhibition at PICC Pasay City Regional S&T Week at DMMSU HARRDEC Regional R & D Highlights Symposium

Extension programs of the Colleges/Institutes

College/Unit	Extension Program
College of Agriculture	Various extension activities in coordination with the University extension program
College of Arts and Sciences	Conduct of seminars on ICT, language education and teaching
College of Engineering and Applied Technology	Consultation on ANEC and other related extension activities
College of Forestry	Seed Dispersal Program
College of Nursing	Reproductive Health Care Community Outreach Diabetic Health Education Program BSU-on the-Air CN Health Clinic
College of Home Economics and Technology	Skills Application Training Program Nutri-Clinic Community-based Home Enterprise Technology Barangay Integrated Development Approach for Nutrition Improvement Consultancy and Expert Services
College of Veterinary Medicine	Pig Dispersal Program
College of Teacher Education	Exchange program in student teaching Adoption of cooperating schools
Institute of Physical Education and Sports	Dance Instruction and Physical Fitness



PTAP project



PTAP project



Plastro greenhouse



Training on Upland Vegetable production



Flower arrangement demonstration

PRODUCTION

Income-Generating Projects

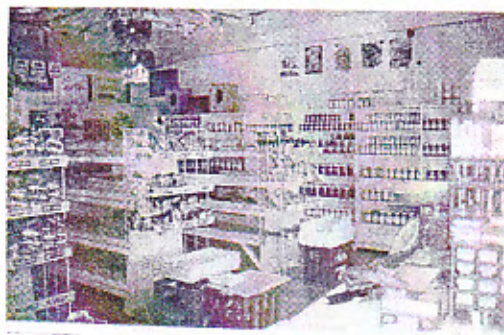
- ❖ The University obtained income from income-generating projects (IGP), students fees and land use facilities rentals;
- ❖ The income generated from these projects was PhP 19M;
- ❖ The income from these projects was used to augment the financial needs of the University;
- ❖ Some units/colleges have institutionalized income-generating projects. The College of Teacher Education operated the Special School, Pre-School and Licensure Examination as IGP;
- ❖ The IGPs are:
 - Agro-forestry
 - Bakery
 - Dairy
 - Floriculture
 - Food Processing
 - Marketing Center
 - Multi-vegetable production
 - Mushroom
 - Pomology
 - Poultry
 - Strawberry prouction
 - Swine
 - Cafeteria
 - CHET Showcase
 - Guestel, Home Management & Executive Guesthouse
 - Men's and Ladies Dormitory
 - Veterinary Clinic ; and
- ❖ The Food Processing and Training Center processed fruit- and peanut-based food products and ube jam. This center created a market niche for domestic consumers. It extended its services as an on-the-job training/ practicum site for students of other colleges as well as students of other state colleges and universities in the country. The bakery, cafeteria and other projects offered also the same services.

Income-generating projects and income

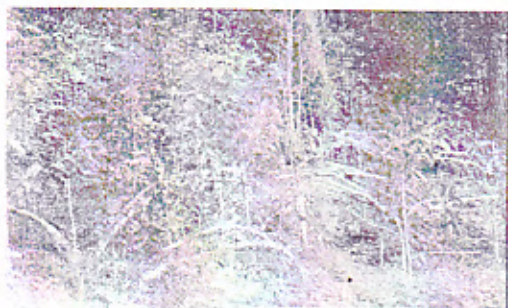
Project	Income	
Income generating projects (Fund 161 & 163)	PhP	5,155,469.41
Tuition fee, and all other student fees		10,934,486.81
Land use and facilities rentals		3,321,239.06
Total	PhP	19,411,195.28



Poultry project



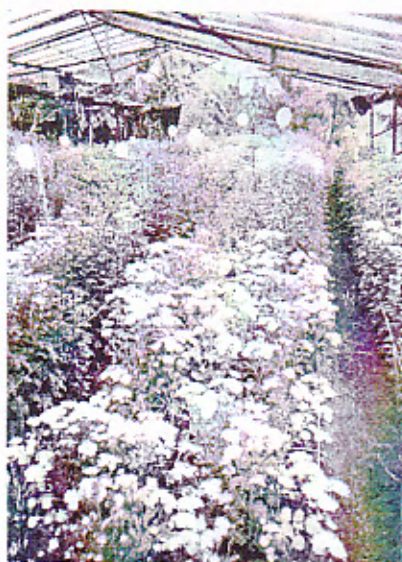
Marketing Center



Coffee plantation



Processed food products



Different varieties of mums

INTERNAL GOVERNANCE

Administration

- ❖ The Administrative Council had new or reappointed members due to retirement and end of tenure of designated positions;
- ❖ Dr. Ester A. Garcia, the CHED Commissioner, took over as Chairperson of the Board of Regents effective November 2000;
- ❖ In response to the growing concerns of the University along instruction, research, extension and production, the Office of the Planning and Development (OPD) under the Office of the President was upgraded and changed into the Office of the Vice- President for Planning and Development (OVP-PD) by virtue of Board Resolution No. 983, s. 2000;
- ❖ The Institutional Review and Planning Workshop was coordinated and participated in by the members of the Administrative Council to give directions for the year. The outputs of the workshop were the formulated Action Plans for 2001 and the Updated University Development Plan for 2001-2004. These plans were further refined and fine-tuned during the Advance Higher Education Administrators Development (AHEAD) Training Course, which was conducted in coordination with SEAMEO Regional Center for Graduate Study and Research in Agriculture (SEARCA).



Participants to the Advance Higher Education Administrators Development Training Course (AHEAD)

Personnel Profile

- ❖ Of the 542 regular employees, 258 are faculty members, 26 are research staff and 258 are support staff; and
- ❖ Twenty personnel were separated from the service due to retirement or death.

Personnel profile according to highest educational attainment

Personnel	Highest Educational Attainment					Total
	UNG*	BS	MS/MA	PhD/ EdD	Post Doc	
Faculty members	0	79	100	76	3	258
Research staff	0	8	16	2	0	26
Support staff	134	107	16	1	0	258
Total						542

* Undergraduate

Faculty and Staff Development

- ❖ Eighteen personnel completed advanced degrees in their field of specialization. Most of them were provided with financial assistance for the production of their theses or dissertations amounting to PhP 250,000.00; and
- ❖ In line with the faculty and staff development of the University, 17 faculty members and staff were granted scholarships. Others attended conferences here and in abroad.

List of personnel who obtained advanced degree

Name	Degree
Alfonso, Gerry M.	MS Forestry
Atinyao, Marlene B.	PhD Animal Science
Bao-idang, Conrado C.	MS Forestry
Basalong, Andres A.	MS Plant Pathology
Bengwayan, Grace T.	MS Rural Development
Bucu, Gilda V.S.	PhD Language Education
Dines, Elvira G.	MA Filipino as Second Language
Lirio, Lorenza G.	PhD Applied Biological Science
Manuel, Divina V.	MAED Administration and Supervision
Palaez, Teresita D.	M Public Administration
Perez, Hilario C.	MS Rural Development
Sagalla, Lily D.	MST Physical Science
Somyden, Ma. Corazon A.	PhD Educational Management
Tacloy, John D.	PhD Rural Development
Tad-awan, Bernard S.	PhD Rural Development
Tianza, Guerzon A.	MS Agronomy
Unos, Mary Ann C.	D Physical Education
Wacangan, Vicente T.	MS Forestry

Seminars and trainings abroad

Name	Seminar/Training	Place
Guitilen, Edith B.	Visiting Scholar with the Center for Research in Women's Studies and Gender Relations (Undertake approved research proposal)	University of British Columbia, Canada
Mula, Rosana P.	Training Course on Urban and Peri-Urban Agribusiness	Israel
Alipit, Percival B.	TUA collaborative Research Conference	Tokyo University of Agriculture, Japan
Balcita, Manuel A.	2000 International Conference (East-West Center Association)	East-West Center Hawaii
Claravall, Norg J.	Library Management and Related Fields	Katholieke Universiteit Leuven, Belgium
Consolacion, Cipriano C.	Asian Association of Agricultural Colleges and Universities (AAACU) Biennial Convention, 2000	Malaysia
Ganga, Zenaída N.	Global Initiative on Late Blight (GILB) of the East and Southeast Asia Linkage Group	Agricultural University of Hebei, China
Gayao, Betty T.	Planning Workshop Capacity Development in Research and Development Organizations	Isnar, Netherlands
Kiswa, Cynthia B.	Training Course: Potato Course Storage and Seed Technology	International Agricultural Center, Netherlands
Macanes, Valentino L.	Follow-up Workshop on Sericulture Production Technology	Seoul, Korea
Mayos, Dizon T.	Recycling Scholarship of the Philippine Institutional Cooperation Program (PIUC)	University of Antwerp-RUCA, Belgium
Mula, Rosana P.	7 th International Congress of Ethnobiology	University of Georgia, Georgia U.S.A.
Naje, Flordeliza O.	Recycling Scholarship of the Philippine Institutional Cooperation Program (PIUC)	University of Antwerp-RUCA, Belgium
Padua, Danilo P.	Follow-up Seminar of Former DSE Training Participants	Food and Agriculture Development Center, Germany
Perez, Jocelyn C.	Conference on Capacity Development Participatory Research	China Agricultural University, China
	Planning Workshop Capacity Development in Research and Development Organizations	Isnar, Netherlands
Tabanda, Maria Elena O.	Third International Post Graduate Course on Food Technology	Israel
Tanyag, Rosalinda C.	Training Course on Sericulture Production Technology	South Korea

Awards

- ❖ The University President was chosen as one of the 2000 Dangal ng Bayan Award by the Civil Service Commission;
- ❖ A support staff was given the Centennial Civil Service Award; and
- ❖ Four support staff were awarded Outstanding Employee and two faculty members, Outstanding Teachers by the University during the University Charter Day celebration.



Because of his outstanding public service, Dr. Cipriano C. Consolacion, was chosen as one of the 2000 Dangal ng Bayan Awardees by the Civil Service Commission

Outstanding employees

Name	Award
Consolacion, Cipriano C.	2000 Dangal ng Bayan Award
Andaya, Montano B	Centennial Civil Service Award and Outstanding Employee
Bosoy, Edna S.	Outstanding Employee
Certeza, Teresita D.	Outstanding Employee
Angel, Clarita S.	Outstanding Teacher
Mayos, Norma S.	Outstanding Teacher

Employee Benefits.

- ❖ Employees availed of monetary and non-monetary benefits, in accordance with existing rules and policies.
- ❖ The Human Resource Management Office of the University processed benefits based on the nature of appointments and service records.

Benefits given to the personnel

Benefit	Number of Personnel
Step increment	145
Loyalty award	67
Monetization of leaves	265
Rehabilitaion leave	2
Special leave privilege	291
Compensatory day-off	11
Employees compensation claim	2

Linkages

- ❖ For capability improvement, resources were sourced out and developed through networking and mutual understanding;
- ❖ Institutional linkages were forged by the University with several national and international agencies; and
- ❖ Most of these linkages were forged to support research and extension projects and faculty and staff development.

New and sustained institutional linkages

Institutional Linkage	Nature of Linkage
ACIAR	Research collaboration on swine
BLPC, BPI-BNCRDC, DA-BAR	Integrated Management of Potato Leaf Miner Project
Cavite State University	Exchange program in student teaching
CIP-UPWARD	Sweetpotato research project
DA-CARFU, BAR, CHARM, BPI	Research and institution development enhancement
DOE	ANEC project
FAPE	Graduate studies assistance
NLARMRDZC, BENECO, LGU	TILAPIA Project
PhilRice	Research and Rice KCS
PIUC	Research and institution, faculty and staff development
Sanju University	Faculty, staff and student exchange
SEARCA	Capability building and staff development
St. Louis University	Research collaboration
TESDA	Extension project
TUA	Case study
UPLB	BIDANI and IPB projects
UPWARD	Sweetpotato research project
VISCA	IPM on sweetpotato project

SEAMEO-SEARCA



Department of Agriculture



Saint Louis University



Philippine Institutional University Cooperation Programme



DOST-CAR Linkage



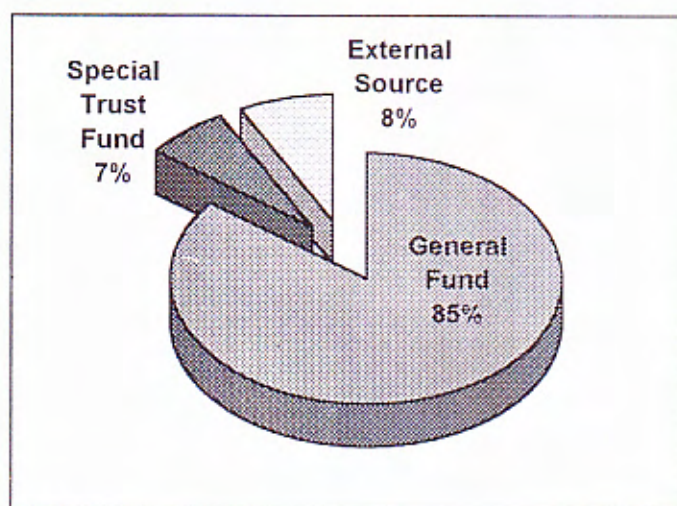
Japanese linkage on non-formal education

Budget

- ❖ Apart from the General Fund, the other sources of budget were drawn from the Special Trust Fund (STF) and external sources;
- ❖ The STF is the income from tuition and fiduciary fees and land and facilities rentals. It is used to supplement the budgetary needs of the University;
- ❖ The external sources are the local and international funding agencies that support instruction, research, development and extension services, and faculty and staff development; and
- ❖ The total budget of the University from these sources was PhP 191,088,000.

The University budget and sources (x000)

Source of Fund	Personal services	Maintenance and other Operating Expenses	Capital Outlay	Others	Total
General Fund	127,631	29,460	4,900	-	161,991
Special Trust Fund	-	-	7,000	6,500	13,500
External Source	-	-	-	-	14,597
* CIP-UPWARD	-	-	-	380	-
* DA-BAR	-	-	-	3,941	-
* DA-CARFU	-	-	-	1,100	-
* DA-CHARMP	-	-	-	066	-
* ORETA CDF	-	-	500	-	-
* PhilRice	-	-	-	800	-
* PIUC	-	1,185	5,729	279	-
* TESDA	029	068	-	-	-
* TUA	-	-	-	400	-
* UPLB-IPB	-	-	-	120	-
Total	127,660	30,713	18,129	11,186	
Grand total					191,088



Infrastructure, Equipment and Facilities

- ❖ The 1999 infrastructure and repair and renovation continuing projects were completed in 2000. Funds amounting to PhP 4M were taken were funded from the 2000 STF budget for these projects.
- ❖ The Oreta Countrywide Development Fund (CDF) and Philippine Institutional University Cooperation (PIUC) funds were used to develop information technology and biotechnology facilities. From DA-BAR, PhP2M was received for the University Institutional Development Enhancement Program; and
- ❖ Information technology (IT) equipment worth PhP 1M was purchased from the General Fund and PhP 3M from the STF budget for other Higher Education equipment. External funds were used to purchase equipment for research and a vehicle.

The infrastructure projects implemented

Project	Cost
New Projects	
Gladiola Center (Phase III)	Php 1,960,000
College of Forestry, Theater Hall (Phase IV)	1,980,000
College of Arts and Sciences (Phase IV)	372,363
Warehouse, completion	496,000
Anthurium Hall, completion	896,000
Road Network I, Faculty and Staff Housing	1,670,000
Road Network II, Faculty and Staff Housig & Forestry area	1,167,250
Marketing Center at km 5	940,000
Guest House, completion	750,000
Fencing of Land Reservation at Ampasit	654,000
Fencing of Land Reservation at Tabangaoen	246,000
<i>Subtotal</i>	<i>11,131,613</i>
Repair and Renovation	
Soils and Chemistry Building	280,000
Elementary Building	346,175
College of Arts and Sciences (Building No. 1)	720,000
College of Home Economics and Technology	430,000
College of Engineering and Applied Technology	912,000
Open Gymnasium	470,000
Men's Dormitory Annex	515,000
Animal Science Building	366,000
Agri-business Building	550,000
Close Gymnasium	3,092,000
Research and Development Complex	412,180
College of Veterinary Medicine	184,000
College of Arts and Sciences (Bldg. No 2)	168,000
College of Teacher Education (comfort rooms)	395,000
High School and Elementary (comfort rooms)	101,709
<i>Subtotal</i>	<i>8,942,064</i>
Total	20,073,677



Anthurium Hall

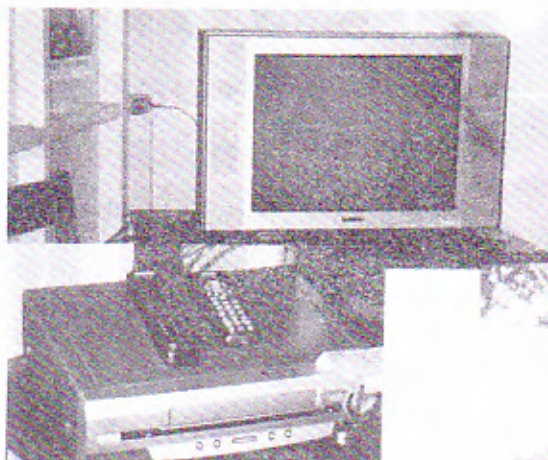


Animal Science Building



Men's Dormitory

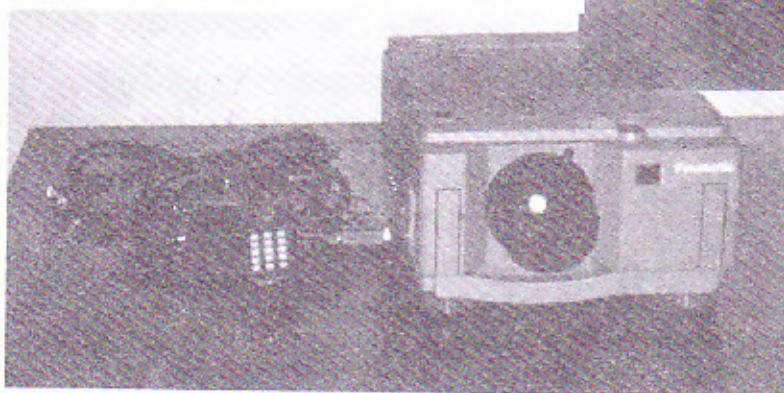
Equipment and vehicle acquired



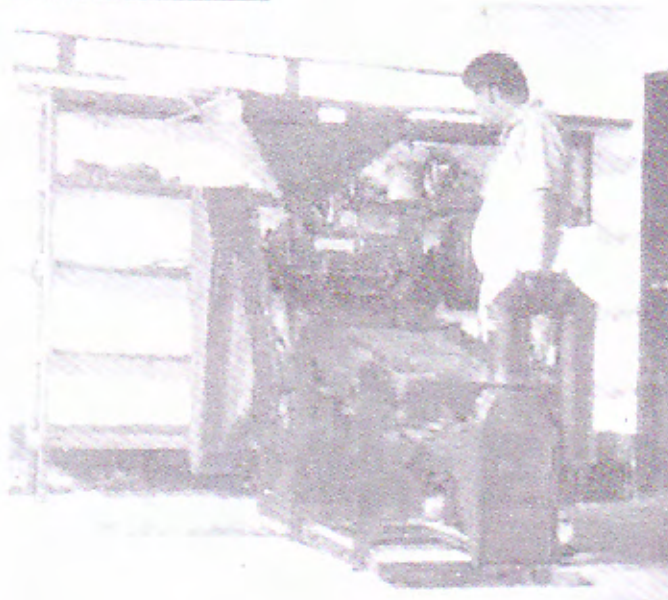
TV set and VHS player



Toyota REVO



LCL Projector



Coffee sheller

Appendix 1. Curricular Offerings

Graduate Studies

- ❖ **Doctor of Philosophy (PhD)**
 - Agricultural Education
 - Agronomy
 - Horticulture
 - Language Education
 - Rural Development
 - Science Education
- ❖ **Doctor of Education (EdD)**
 - Educational Management
- ❖ **Master of Science (MS)**
 - Agricultural Economics
 - Agricultural Education
 - Agronomy
 - Animal Science
 - Biology
 - Botany
 - Entomology
 - Extension Education
 - Horticulture
 - Forestry
 - Plant Pathology
 - Rural Development
 - Soil Science
- ❖ **Master in Public Administration (MPA)**
- ❖ **Master of Arts in Education (MAEd)**
 - Education and Administration
 - Elementary Education
 - Guidance and Counselling
- ❖ **Master of Arts (MA)**
 - Home Economics
 - Physics
 - Physical Education
 - Social Studies
 - English as a Second Language
 - Filipino as a Second Language
 - Technology and Home Economics
 - Chemistry
 - General Science
 - Mathematics
 - Applied Statistics
- ❖ **Master of Resource System Management (MRSM)**
- ❖ **Master of Forestry (MF)**

Undergraduate Programs

- ❖ Bachelor of Science in Agriculture
 - ❖ Bachelor of Science in Agribusiness
 - ❖ Bachelor of Science in Development Communication
 - ❖ Bachelor of Science in Applied Statistics
 - ❖ Bachelor of Science in Environmental Science
 - ❖ Bachelor of Science in Information Technology
 - ❖ Bachelor of Science in Agricultural Engineering
 - ❖ Bachelor of Science in Forestry
 - ❖ Bachelor of Science in Home Economics
 - ❖ Bachelor of Science in Nutrition and Dietetics
 - ❖ Bachelor of Science in Nursing
 - ❖ Bachelor of Science in Agricultural Education
 - ❖ Bachelor of Science in Secondary Education
 - ❖ Bachelor of Science in Elementary Education
 - ❖ Bachelor of Science in Animal Technology
 - ❖ Doctor of Veterinary Medicine
 - ❖ Certificate in Public Administration
 - ❖ Diploma in Physical Education
 - ❖ Associate in Entrepreneurial Technology
 - ❖ Certificate in Basic Automotive Technology
 - ❖ Forest Ranger Certificate
- #### Basic Education
- ❖ Secondary Education
 - ❖ Elementary Education
- #### Open University
- ❖ Master's Degrees (Distance Education)
 - ❖ Diploma Courses
 - ❖ Short Term Courses
- #### Non-Formal Education
- ❖ Tailoring
 - ❖ Dressmaking
 - ❖ Food Processing
 - ❖ Baking Courses

Appendix 2. List of Achievers

Name	Degree/Year	Ave.	Name	Degree/Year	Ave.
Luis, Benjamin S.	BSA I	1.27	Ventura, Fernando Jr. M.	DVM II	1.63
Sagalla, Esther J. D.	BSA III	1.38	Aliping, Ricalyn R.	BEE III	1.66
Shagol, Charlotte C.	BSA III	1.39	Esiong, Jerelyn K.	BSHE II	1.66
Gibson, Noreen J.	BSA II	1.42	Agtulao, Bona C.	BEE I	1.67
Consolacion, Cheryl C.	BSA III	1.46	Tul-lay, Clarisa M.	DVM I	1.67
Basngi, Yvonne Claire B.	BSNI	1.46	Kinway, Glynnis m.	BSE III	1.67
Bawang, Ederson G.	BSE II	1.47	Pachao, Karen Gale C.	BSN II	1.67
Ticbayan, Jeanesol B.	BSAS I	1.48	Alamada, Norhayda b.	BSF I	1.67
Boado, Girly C.	BSIT I	1.50	Gamboa, Juliet S.	BSAE I	1.67
Nabusan, Edlyn Mae W.	DVM I	1.50	Ayban, Ursula D.	BSE III	1.67
Rosario, Analiza C.	BSA II	1.50	Dominico, Edna D.	BEE III	1.68
Visaya, Melanie G.	BSA II	1.50	Viernes, Judith L.	BSAE III	1.68
Wakat, Janice K.	BSAS II	1.56	Fernandez, Lovella C.	IBSA I	1.68
Salcedo, Glory Ann Q.	BSA II	1.57	Slaking, Febroina B.	BSAE I	1.68
Pachao, Meliza C.	BSA I	1.58	Reconsal, Jenelyn L.	BSAEng'g III	1.68
Pigganto, Jonalyn L.	BSF I	1.58	Danagen, Irene w.	BSE II	1.68
Ligligan, Jennifer G.	BEE I	1.58	Besic, Elvira D.	BSF III	1.69
Ligat, Casmir s.	BSA II	1.59	Barrozo, Lome S.	BSA III	1.69
Duque, Verna V.	BSES III	1.59	Allay, Benda B.	BSE I	1.69
Felix, Rubelyn b.	IBSAE I	1.59	Macario, Jennifer F.	BSE I	1.69
Rulloda, Jovelyn	BEE I	1.59	Ayacan, Tondo M.	BEE II	1.70
Bolide, Lily Ann B.	BEE I	1.59	Loque, Celestina T.	BEE III	1.70
Tayan, Sonia G.	BEE II	1.60	Balangen, Lovilyn F.	BSHE II	1.70
Mallones, Aileen A.	DVM I	1.60	Siclegen, Denilda C.	BSES I	1.71
Matias, Grace w.	BSA III	1.60	Calixto, Jenelyn C.	BSHE I	1.71
Ampaguey, Jonard W.	BSA III	1.62	Palaez, Ferlyn B.	BEE II	1.71
Islao, Benito Jr. A.	BSAEng'g	1.62	Locan-eo, Annie T.	BEE I	1.71
Caluza, Irenia I.	BEE I	1.63	Albis, Agustina B.	BEE I	1.71
Igualdo, Belinda c.	BEE I	1.63	Mendoza, Estelito B.	BSE II	1.71
Songuitan Madeline A.	BSA III	1.63	Subna-en, Jo-anne B.	BSHE I	1.72
Macliing, Elizabeth g.	BSA II	1.63	Belino, Elvena P.	BSHE III	1.73
Mayos, Haldi B.	BSAS II	1.63	Juntill, Cheryl S.	DVM II	1.73
Torres, Theacamille Y.	BSN I	1.64	Bimmactal, Judith t.	BSAEng'g I	1.73
Bagsangi, Ma. Theresa b.	BSAS I	1.65	Calubandi, Pamela c.	BSND III	1.73
Palaez, Janice A.	BSES II	1.66	Bartlet, Marissa I.	BEE I	1.75
Liwananen, Avegale Charisma A.	BSES II	1.66	Siloy, Desire C.	BSIT I	1.75
Penchon, Hector M.	BSIT I	1.66	May-os, Jiniline B.	BEE I	1.75

Appendix 3. Researches conducted in collaboration with private agro-chemical companies

Company	Title of Research
Allied Botanical Corporation	<ul style="list-style-type: none"> * Variety Trials of Various Brassicas, Lettuce, Tomato, and Cabbage * Variety Trial of Highland Vegetables
Bayer Phils.	<ul style="list-style-type: none"> * Evaluation of a New Compound for the Control of Late Blight of Potato and Tomato * Effects of Existing Bayer Insecticides Against DBM, Thrips, Leafminer on Selected Highland Crops
Dupont Phils.	<ul style="list-style-type: none"> * Field Efficacy Evaluation of Steward 50 WG Against DBM * Field Evaluation of Equation PRO-52.5 DF for Late Blight Control in Tomato
Harveson Lead Corporation	<ul style="list-style-type: none"> * Bio-Efficacy of Free-Grow on Carrots * Rimon 10 EC Sequential Application of SBM Control in Head Cabbage
Norks Hydro Phils.	<ul style="list-style-type: none"> * Efficacy Test of 25-7-7 and 16-16-16 on Potato and Cabbage
Novartis Agro-Phils. Inc.	<ul style="list-style-type: none"> * Field Evaluation of Ridomil Gold in Controlling Late Blight of 11. Potato and Tomato * Field Evaluation of Selecron 500 EC and Pegasus 250 SC Against Pest Complex of Asparagus * Greenhouse Bioefficacy of Pegasus 250 for the Effective Control of Mites in Chrysanthemum * Greenhouse Evaluation on the Efficacy of Flint 125 EC for the Control of Chrysanthemum Rust

Appendix 4. The Administrative Council

CONSOLACION, Cipriano C.
Chair and Presiding Officer, University
President

BAWANG, Franco T.
Vice Chair, Executive Vice President

BENGWAYAN, Grace T.
Secretary, University and Board Secretary

BULIYAT, Marcos A.
Member, Vice President for Academic
Affairs

COLTING, Rogelio D.
Member, Vice President for Research and
Extension

MERESTELA, TESSIE M.
Member, Vice-President for Planning and
Development
Effective 15 November 2000

AVILA, Jane K.
Member, Dean- College of Home
Economics and Technology

BALANGEN, Melecio A.
Member, Dean- College of Forestry

CAWAON, Florence C.
Member, Dean-College of Nursing

CHUA Edna A.
Member, Dean-College of Arts and Sciences

PADUA, Danilo P.
Member, Dean- College of Agriculture

BAGANO, Juliet P.
Member, Coordinator - Open University

DIEGO, Ruth C.
Member, Dean-College of Veterinary
Medicine

GARIN, Dominador S.
Member, Dean- Graduate School

LUBRICA, Percyveranda A.
Member, Dean-College of Teacher
Education

BOLINTO, Henry K.
Member, Chair- Secondary Education
Training Department

CELINO, Sonia M.
Member, Chair, Elementary Education
Training Department

LACONSAY, Eduardo P.
Member, Director-Institute of Physical
Education and Sports

LEE, Gloria R.
Member, Director-Institute of Public
Administration

CASTRO, Paul S. (Jan. – March.)
BAUTISTA, Tirso G. (April – May)
MAMARIL, Daniel Victor (June – Oct)
IGLESIAS, Juanito B. (Oct. – March)
Member, ROTC Commandant

TANDANG, Leoncia L.
Member, Director-Research

MULA, Rosana P
Member, Director-Extension

ALIPIT, Percival B.
Member, Director-Horticulture Research and
Training Institute

DIMAS, Benjamin B.
Member, Director- Institute of Highland
Farming Systems and Agroforestry
Until 30 July 200

MADDUL, Sonwright B.
Member, Director- Institute of Highland
Farming Systems and Agroforestry
Effective 01 August 200

GANGA, Zenaida N.
Member, Director-Highland Agriculture and
Resources Research Consortium

PEREZ, Jocelyn C.
Member, Director-Northern Philippine Root
Crops Research and Development Center

TAGARINO, Darlyn D.
Member, Director- Institute of Highland and
Policy Studies and Socio-Economic
Research and Development

CLARAVALL, Nora J.
Member, Director-University Library
Services

DIMAS, Caroline B.
Member, Director-Admissions Office

MINA, Wilfredo B.
Member, Director of Student Affairs

GLASER, Ricky Nell M.
Member, President-Supreme Student
Council
Until July 2000

BUGTONG, Allen C.
Member, President-Supreme Student
Council
Effective August 2000

LATAWAN, Vilma
Member, Editor-in-Chief-Mountain Collegian

FORMARAN, Villa L.
Member, Chief-Medical Services
BALWEG, Bienvenido M.
Member, Director-Media and Publications

TAGARINO, Leopoldo N.
Member, Director-University Business
Affairs, Until April 2000

ANGIWAN, Matias C., Jr.
Member, Legal Officer

GRANDE, Wagner F.
Member, Information Officer II

TIPAYNO, Alfredo C.
Member, Chief-Land Reservation Office
President-BSU Employees Association

BOLINTO, Violeta B.
Member, Chief, Internal Audit Services

NARAG, Sherelyn A.
As observer, Resident Auditor-Commission
on Audit

RAMOS, Estrella A.

Member, Chief-General Administrative
Services Division and
Interim UBP Coordinator
Effective 10 October 2000

ESTEBAN, Emilia M.
Member, Chief-Human Resource
Management Office

LIMPIN, Victoria L.
Member, Chief-Records Management Office

COILAN, Nicanra J.
Member, Chief-Supply Management Office

VICTOR, Priscilla P.
Member, Chief-Financial Services Division

RAPUSO, Mary Joy S.
Member, Chief-Accounting Office

ALAGAO, Ludivina O.
Member, Chief-Budgeting Office

LIMPIN, Oscar B.
Member, Chief-Cashiering Office

LAPICTO, Eladio O.
Member, Director-General Services

DANGWA, Olga C.
Member, Special Assistant for Community
Affairs

MONROE, Remigio, E., Jr.
Member, Director-Presidential Committee on
Culture and the Arts

BANIWAS, Tranquilino B.
Member, President-BSU Non-Teaching
Association

CADATAL, Macario D.
Member, President-BSU Faculty Club

Appendix 5. The Board of Regents in 2000



Hon. Kate C. Botengan
Chair and Presiding Officer
Commission on Higher Education
Until August 2000



Hon. Ester A. Garcia
Chair and Presiding Officer
Commission on Higher Education
Effective September 2000



Hon. Cipriano C. Consolacion
Vice Chairman and President
Benguet State University



Hon. Teresa Aquino Oreta
Member and Chair
Senate Committee on Education,
Culture and Sports



Hon. Dante V. Liban*
Member and Chair
Congressional Committee on Education,
Culture and Sports
Until October 2000



Hon. Juan B. Ngalob
Member and Regional Director
National Economic
and Development Authority
Cordillera Administrative Region

* Hon. Rosenda M. Ocampo, took over until December 2000



Hon. Libertito S. Feliciano
Member and Regional Director
Department of Agriculture
Cordillera Administrative Region
Until February 2000



Hon. Elizabeth A. Verzola
Member and Regional Director
Department of Agriculture –
Cordillera Administrative Region
Effective December 2000



Hon. Leo T. Carpio
Member and President
BSU Alumni Association, Inc.



Hon. Ben Ladilad
Member and Regional Director
Department of Science & Technology
Cordillera Administrative Region



Hon. Macario D. Cadatal
Member and President
BSU Faculty Club



Hon. Rickynell M. Glaser
Member and President
BSU Supreme Student Council
Until March 2000



Hon. Allen Bugtong
Member and President
BSU Supreme Student Council
Effective April 2000



Ms. Grace T. Bengwayan
Board Secretary V
Benguet State University

Production Staff	
<i>Production Coordinator and Writer</i>	Tessie M. Merestela
<i>Production Assistant and Lay-out Design</i>	Flordeliza O. Naje
<i>Editor</i>	Rodolfo T. Abastilla
<i>Production Staff</i>	Erlinda B. Alupias
	Wagner F. Grande
	Victoria S. Dona
<i>Contributors</i>	Grace T. Bengwayan
	Gilda B. Jacalan
	Reynaldo B. Buenavista
	Amelia M. Kimeu
	Wilfredo B. Estolas
<i>Consultants</i>	Cipriano C. Consolacion
	Franco T. Bawang
	Marcos A. Buliyat
	Rogelio d. Colting

2000 Annual Report
Produced by the
Office of the Vice-President for
Planning and Development
Benguet State University
La Trinidad, Benguet, Philippines 2601
merestela-pdo@bsu.edu.ph