

BENGUET STATE UNIVERSITY:  
THE CHALLENGES AHEAD

*Annual Report*

FY 1986

LUCIO B. VICTOR  
PRESIDENT



BENGUET STATE UNIVERSITY  
LA TRINIDAD, BENGUET-0211  
PHILIPPINES

Republic of the Philippines  
BENGUET STATE UNIVERSITY  
La Trinidad, Benguet

April 7, 1987

Her Excellency  
President Corazon C. Aquino  
Malacañang, Manila

Through: The Hon. Lourdes R. Quisumbing  
Chairman, BSU Board of Regents and  
Secretary of Education, Culture and Sports

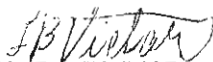
Madame:

I have the honor to submit the Annual Report of the Benguet State University for the Fiscal Year 1986.

The year 1986 provided development re-orientation for BSU as it has been finally elevated into a University. May I take this occasion therefore to pledge our sustained commitment to continually provide quality education, research and training services to the highland areas of Northern Philippines and our utmost support and loyalty to the government.

Finally, I would like to express my wholehearted gratitude for giving me the chance to head this University.

Very truly yours,

  
LUCIO B. VICTOR  
President

/sac

Republic of the Philippines  
BENGUET STATE UNIVERSITY  
La Trinidad, Benguet

BOARD OF VISITORS

Her Excellency The President  
CORAZON C. AQUINO

SALVADOR H. LAUREL  
Vice President &  
Secretary of Foreign Affairs

BOARD OF REGENTS

The Honorable LOURDES R. QUISUMBING  
Secretary, Department of Education, Culture & Sports  
Chairman

Honorable MINDA C. SUTARIA  
Representing the Secretary  
Undersecretary, Department of Education, Culture & Sports  
Presiding Officer of the Board

Honorable LUCIO B. VICTOR  
President, BSU  
Vice Chairman

Honorable JOSEPH M. ALABANZA  
Executive Director, NEDA, Region I  
Member

Two Prominent Citizens  
(not yet appointed)  
Members

Mr. ROMULO Q. APOLONIO  
University and Board Secretary

## TABLE OF CONTENTS

	<u>Page</u>
I. BSU IN 1986: AN OVERVIEW	1
II. THRUSTS, GOALS AND OBJECTIVES	3
III. INSTRUCTION	6
A. Elementary Education	6
Pupil Development	6
Personnel Development and Management	6
Researches	6
Special Program	6
B. Secondary Education	7
Curricular Program	7
Student Development and Management	7
Personnel Development and Management	8
Curriculum Development	8
Researches and Publications	9
Extension and Community Services	9
Sports Development	10
Special Programs and Projects	10
C. Tertiary Education	11
Academic Programs	11
Student Development and Management	12
Faculty Development and Management	14
Curricular Development	14

	<u>Page</u>
Physical Facilities Development	15
Researches and Publications	15
Completed Researches	15
On-Going Researches	18
Proposed Researches	20
Extension and Community Services	20
Cultural and Sports Development	21
Special Programs and Projects	22
D. Cultural and Sports Development	23
Library Services Development	23
Cultural Development	24
Sports Development	25
IV. RESEARCH AND DEVELOPMENT	26
Research and Technology Refinement	26
Completed Researches	26
On-Going Researches	27
Extension and Training Services	28
Publications and Media Services	29
Specialized Research Units	29
Highland Agricultural Research Center	29
Northern Philippines Root Crops Research and Training Center	31
BSU-IPB Highland Crops Research Station	34
V. GENERAL ADMINISTRATION	35

	<u>Page</u>
BSU Board of Regents	36
Personnel Management	36
Health Services	38
Agri-business Production Projects	39
Land Reservation	39
Infrastructure Program	40
Appropriation/Fiscal Support for 1986	40
Institutional Problems/ Recommendations	41
VI. APPENDICES	43

LIST OF TABLES

TABLE NO.

1	Enrollment by level, SY 1986-87	43
2	Summary on number of undergraduate students by Province (2nd Sem 1986-87) (Second Semester 1986-87)	44
3	Graduates by level, SY 1985-86	45
4	Summary of scholarships/grants to undergraduate students	46
5	Student services extended by the Guidance and Counseling Services	47
6	Number of cases served by the Health Services Division	47
7	List of recognized student clubs/ societies/organizations for SY 1986 SY 1986-87	48
8	Faculty/staff development programs by specialization, by institution, sponsor and number enrolled	49

<u>TABLE NO.</u>		<u>Page</u>
9	Extension and Training Services offered by the University	51
10	Faculty and staff profile	52
11	Faculty profile by Academic Rank	52
12	Crops and area planted by the Business Affairs Division	53
13	Various farming projects of the University	54
14	Appropriations/fiscal support for 1986	55

## BSU IN 1986: AN OVERVIEW

The year 1986 was characterized as an unusually eventful year. For the Benguet State University, 1986 ushered new dimensions in its history when it was converted into a university through Presidential Decree No. 2010 on January 12, 1986. Indeed, its elevation into a State University was the culmination of the unified efforts of the then Mountain State Agricultural College (MSAC) community, the public officials, the alumni and other concerned organizations and individuals which began in the late 1970's.

To effect the provisions of P.D. 2010, Dr. Fortunato A. Battad, the first University President reorganized the College to fit under the new university governance schema through the designation and re-designation of the University officials. Likewise, the Board of Trustees was reconstituted as the University Board of Regents.

However, a new twist in the national political scene happened when a snap presidential election was held on February 7, 1986. From February 16 to 22, 1986 political unrest was at its height in Metro Manila as Corazon C. Aquino pursued in her campaign for civil disobedience in protest to the electoral frauds during the snap presidential election. It was also during this period when the 1986 Regional State Colleges and Universities Athletic Association (SCUAA) Meet was held in the campus of the Benguet State University. The different delegations were worried about the worsening political situation in Metro Manila. The games were all played as scheduled and the Benguet State University performed its important role as the host institution and bagged the over-all championship.

On February 25, 1986 through the combined forces of former Defense Minister Juan Ponce Enrile and General Fidel Ramos of the Armed Forces of the Philippines, with the strong backing and support of people power toppled the 20-year Marcos regime and proclaimed Corazon C. Aquino as the seventh President of the Republic. Indeed, the February revolt at EDSA changed the course of Philippine history, a revolution which has no parallel in contemporary history.

After the heroic and historic events in February, the political atmosphere seemed to return to normalcy. The organizers of the 1986 Ilocos Region Athletic Association (IRAA) Meet decided to push through their plans and held the meet at the BSU Sports Complex on March 16-20, 1986.



On April 30 to May 2, 1986, the 2nd Annual Scientific Convention of the Federation of Crop Science Societies of the Philippines (FCSSP) was held for the first time at BSU. The FCSSP, a national federation, is composed of four societies which include: the Crop Science Society of the Philippines (CSSP), the Society for the Advancement of the Vegetable Industry (SAVI), the Philippine Association for the Advancement of the Fruit Industry (PAAFI), and the Philippine Seed Industry Association (PSIA). About 700 scientists all over the country convened to participate in the convention. A faculty of BSU in the person of Dr. William D. Dar was elected President of CSSP and Chairman of FCSSP for the year 1986-87.

On July 1, 1986, BSU president, Fortunato A. Battad went on leave covering the period from July 1 to December 31, 1986. Prof. Lawana T. Batcagan was designated by MECS Minister Lourdes R. Quisumbing the Officer-In-Charge of the University. This period started the search for a new president which pre-occupied the minds of the university constituents as other groups and organizations clamored for an Igorot president. The search was finally over when the Ministry of Education, Culture and Sports announced during the peace talks in Manabo, Abra on December 2, 1986 that Dr. Lucio B. Victor, a native of Benguet was chosen among the four Igorot candidates as the second president of the University.

## THRUSTS, GOALS AND OBJECTIVES

The Benguet State University (BSU), strategically located in La Trinidad, Benguet stands as a premiere educational research and training institution in the Agricultural Sciences and Rural development in the mountain provinces of Northern Philippines. It has continuously expanded, broadened and strengthened its quadruple functions - instruction, research, extension and production in response to regional and national needs.

The University aims at the total development of man. Thus, it has the following general objectives:

1. To strive for excellence in education specifically in agriculture and rural development in the highlands and in the country as a whole;
2. To strengthen its focus in development programs and projects, in instruction and research and the application of new knowledge and skills for the improvement of the quality of life of the small farmers and rural folks in the mountain provinces and adjacent areas.
3. To work and coordinate with the local, national and international institutions and agencies for the promotion of relevant information, instruction, research and extension; and
4. To develop leadership and good citizenship and inculcate a value system to uphold the dignity of mankind.

The University is composed of seven (7) colleges, five (5) specialized research units, one (1) specialized training unit, three (3) affiliate institutions located on the campus and several special projects/units.

### ☼ The Colleges

- College of Agriculture
- College of Forestry
- College of Arts and Sciences
- College of Teacher Education
- College of Applied Engineering and Technology
- College of Veterinary Medicine
- Graduate School

### ☼ Specialized Research Units

- Highland Agricultural Research Center (HARC)
- Northern Philippines Root Crops Research and Training Center (NPRCRC)
- Horticultural Research and Training Institute (HORTI)

- Institute of Highland Farming Systems (IHFS)
- Highland Crops Research Station (HCRS) of the Institute of Plant Breeding (IBP), UPLB

☼ Specialized Training Unit:

- Regional Training Center for Rural Development (RTC-RD)

☼ Special Projects/Units:

- Agro-Forestry Special Project
- BSU Food Processing Center
- BSU Demonstration/Commercial Farm
- Highland Rural Development Program (HRDP)
- Highland Agriculture Development Program (HADP)

☼ Affiliate Agencies:

- Silk Industry Development Program of the Philippines Textile Research Institute (PTRI)
- Inland Fisheries Station of the Bureau of Fisheries and Aquatic Resources (BFAR)
- Agricultural and Meteorological Station (AGMET) of the Philippine Atmospheric, Geophysical and Astronomical Services Administration (PAG-ASA)

BSU's research and development activities are need-oriented. Much attention has been given to the immediate and actual needs of the highland communities in order to improve agricultural productivity income, and eventually enhance their economic and social well-being. To attain this, BSU recognizes the importance of linkages with other agencies and institutions involved with the same tasks of promoting development of the rural areas.

The University has a direct link with the Philippine Council for Agriculture and Resources Research and Development (PCARRD), the National Research Monitoring and Coordinating body, the Ministry of Agriculture and Food (MAF), the National Science and Technology Authority (NSTA), the National Economic and Development Authority (NEDA), the National Research Council of the Philippines (NRCP), the Australian Center for International Agriculture Research (ACIAR), the Japan International Cooperation Agency (JICA), the Centro Internacional de la Papa (CIP), the International Development Research Council (IDRC), the Ford Foundation, Inc., the National Council for Integrated Area Development (NACIAD), the Saint Louis University (SLU) and other foreign and local institutions, agencies.

With the growing need for more extension activities and field researches so that people could actively benefit as well as contribute in the development efforts, BSU is doing well and all its best to

get the help and work hand in hand with other institutions.

Collaboration in research with other State Colleges and Universities in the country is maintained by BSU in order to enhance its effectivity as an agent of development. Close communication and exchange of research breakthroughs among these institutions are made possible through the exchange of research journals and other technology printed materials.

## INSTRUCTION

### A. ELEMENTARY EDUCATION

Under the umbrella of the College of Teacher Education, the Elementary Training Department serves as the training laboratory for student teachers. As a laboratory school, it extends educational services mostly to children of the University faculty and staff and residents around the vicinity of the University.

It offers complete courses from Grades I to VI and kindergarten.

#### Pupil Development and Management

Homogenous grouping of grade school pupils according to their reading ability has been instituted in order to formulate programs for the advancement of elementary teaching. As has been done in previous years, pupils found to be slow learners were offered remedial instruction to help them cope with everyday lessons.

Student teachers from BSU, SLU and other teacher training schools undergo off-campus practice teaching in the department.

#### Personnel Development and Management

Elementary teachers undergo Performance Appraisal System for Teachers (PAST), an evaluation instrument to appraise instruction through teacher performance.

To improve teaching competence, in-service trainings were offered to teachers and were allowed to attend seminars/workshops along the line of leadership training, speed and comprehension in reading, current trends in teaching English, Pilipino, Math and Science, Physical Education, PRODED, Journalism and other related training/workshops. Aside from these, teachers were also encouraged to take up advanced graduate courses.

#### Researches

The Elementary Training Department conducted action researches on causes of tardiness, correlation of drop-outs to transferses, correlation of reading to other basic subjects and strength of subject areas.

#### Special Program

The Elementary Training Department administers and supervises the management of the Kindergarten classes. For SY 1986-87, their 47 pupils enrolled in the kindergarten graduated in March.

## B. SECONDARY EDUCATION

The Secondary Department is under the College of Teacher Education and serves two main functions: provide formal high school education and training for prospective teachers from the College of Teacher Education and other colleges and universities as well. The Department has the following high school curricular offerings:

- a. Vocational Agriculture
- b. Agricultural Home Economics
- c. Special Science Curriculum
- d. General Curriculum

### Student Development and Management

The goal of the Secondary Education Department is not only for the acquisition of knowledge but also for the development of skills and attitudes with a curriculum which is vocationally-oriented to prepare productive citizens. For instance, practical arts subjects are aimed to equip male students with various agricultural and industrial arts. First and second year male students are required to take up animal husbandry and horticulture subjects while those at the third and fourth years take wood working, metal working, electricity, furniture and cabinet making, and building construction. Female students take vocational education consisting of homemaking arts, distributed as follows: foods for the first year, handicraft for the second year, clothing for the third year and home management for the fourth year. At the end of their senior year, high school students shall have been equipped with some basic skills to enable them to explore job opportunities or to generate self-employment projects.

Other self-development activities where students participated are the following:

- a. Participated in the 11th Joint FFP-FAHP and the 9th FFPCC Regional Conventions. The BSU High School bagged the trophy for general championship.

- b. Attended the 1986 Science Journalism Conference from the local to the regional conference.

c. Staff members of the Mountain Breeze, an official organ of the high school department attended the local, regional and national press conference.

The Secondary Education Department has a total enrollment during the SY 1986-87 of 934 broken down as follows: Special Agricultural Science Curriculum - 106; Vocational Agriculture and Agricultural Home Economics - 404; and General Curriculum - 424.

#### Personnel Development and Management

Scholarships as well as non-degree training courses were offered to faculty members to effectively carry out the secondary education' academic and vocational subjects.

Ninety percent (90%) of the high school faculty members acted as cooperating teachers of student teachers from the BSU College of Teacher Education, Saint Louis University, Bulacan College of Arts and Trades, Tarlac School of Arts and Trades, Bokod School of Arts and Trades and Central Luzon State University.

During the local and regional conventions of the Future Farmers of the Philippines (FFP) and Future Agricultural Homemakers of the Philippines (FAHP), all high school teachers served as trainers and members of the working committee. The Vocational Education teachers served as trainers for the FFP and FAHP skills competition while the academic teachers served as trainers for literary-musical skills competition.

In-service trainings attended by Math and Science Teachers:

- a. Regional Science Journalism
- b. Food Processing and Soap Making Demonstration
- c. Programs and Conferences on Science Consciousness
- d. Mathematics Olympiad
- e. National Science Seminar

#### Curriculum Development

The syllabi of all subjects offered in the Secondary Education Department were updated to suit the needs of the students and the teachers in effecting instruction. To supplement this activity, the High School Library was a recipient of 300

copies of books donated by the Parents and Teachers Association (PTA) and the Student Body Organization (SBO).

### Researches and Publications

The Agricultural Science students conducted applied agricultural researches in connection with their agricultural science subjects. A total of 21 researches were completed for SY 1986-87.

#### Research Activities

#### Researcher

#### Completed Researches:

- |   |             |
|---|-------------|
| 1. Folklore of the Ethnic Tribes of the Mountain Provinces  | J.P. Bagano |
| 2. An Assessment of the Comprehension Skills of High School Students Through a Constructed Reading Test | J.P. Bagano |

#### On-Going Researches:

- |   |             |
|---|-------------|
| 1. Folksongs and Dances of the Ethnic Tribes of the Cordillera                                | J.P. Bagano |
| 2. Development of Reading Diagnostic Test and Reading Skill Builders for High School Students | J.P. Bagano |
| 3. Student Delinquency  | F. Comila   |

#### Proposed Research:

1. Value Clarification Among High School Students Through Homeroom Guidance, Literature and Social Studies

### Extension and Community Services

Two personnel from the Department provided technical guidance and assistance to nine (9) farmers growing fruit trees in the province of Benguet aside from giving lectures on fruit production in the Mountain Province, Ifugao and Baguio City.



The High School students helped maintain cleanliness and sanitation in the community by cleaning the sidewalks and canals along the highways including the La Trinidad public market.

### Sports Development

As part of the high school general curriculum, high school students actively participated in sports activities of the University as follows:

- a. University Athletic Intramurals
- b. Provincial Athletic Meet
- c. State Colleges and Universities Athletic Association Meet (SCUAA)
- d. Ilocos Region Athletic Association Meet (IRAA)

### Special Programs and Projects

- a. Supervised Farming Program

Students involved in the Supervised Farming Program under the supervision of their respective vocational agriculture instructors planted various horticultural crops to a total area of 20 hectares, fifteen hectares were used for strawberry production while the rest were for vegetable production.

Vocational agriculture and practical arts students also engaged in rabbitry and poultry production.

- b. Home Economics

The Home Economics classes were likewise engaged in production activities such as catering services, cafeteria, crocheting and dressmaking.

## C. TERTIARY EDUCATION

### Academic Programs

The educational thrust of the University is to train leaders for the development of the agricultural and natural resources of the region in particular and the country in general by providing technological competence in specific areas of work.

The University Tertiary Education offers three (3) doctoral degree programs, ten (10) masteral degree programs, ten (10) baccalaureate degree programs and several non-degree/non-formal programs as follows:

#### Graduate Programs

##### Doctor of Philosophy (Ph.D.)

- Ph.D. in Horticulture
- Ph.D. in Agricultural Education
- Ph.D. in Rural Development

##### Master of Science/Education

- MS in Agricultural Education
- MS in Rural Development
- MS in Agricultural Economics
- MS in Extension Education
- MS in Forestry
- MS in Agriculture
  - Major in: a) Agronomy
  - b) Animal Science
  - c) Botany
  - d) Entomology
  - e) Horticulture
  - f) Plant Pathology
  - g) Soil Science

- MS in Teaching Physical Science
- MA in Physical Education
- MEd in Home Economics
- MEd in Practical Arts

#### Undergraduate Degree Programs (BS)

- BS in Agriculture
- BS in Agricultural Education
- BS in Home Economics

BS in Nutrition and Dietitics  
 BS in Agricultural Engineering  
 BS in Forestry  
 BS in Animal Technology  
 BS in Agricultural Business  
 BS in Applied Statistics  
 Doctor of Veterinary Medicine

Post Secondary/Non-Degree Programs

Agri-Forestry  
 Dressmaking  
 Tailoring  
 Baking  
 Food Preservation  
 Applied Technology Course
 

- a. Farm Machinery Technology
- b. Carpentry and Wood Working Technology
- c. Metal Work and Welding Technology
- d. Practical Electricity and Electronics Technology

 Certificate in Physical Education

Listed hereunder is the number of graduates and enrollment:

No. of graduates - 274

Student enrollment -

Summer 1986 - 942

1st Semester 1986-87 - 1,830

2nd Semester 1986-87 - 1,703

Student Development and Management

a. Student Financial Aid Program

Student development programs of the University were institutionalized through the creation of a Student Financial Aid Office (SFAO) intended to coordinate and monitor scholarship programs and educational grants. It also assists students in their application for financial assistance to various government and private institutions.

As per record of the Student Financial Aid Office, there were 195 scholars or grantees and 67 barangay scholars enrolled in the University for the SY 1986-87. Athletic and academic scholars which the University offers to deserving students

are not included. The 195 scholars/grantees have been supported by the National Food and Agriculture Council, Benguet Foundation Incorporated, National Integrated Study Grant Program, Selected Ethnic Group Educational Assistance Program, State Scholarship Program and Study-Now-Pay Later Plan.

#### b. Guidance and Counseling Services

Guidance and Counseling is a special service function of the University intended to achieve coordination of student services and help in the attainment of the University's educational goals. The general objectives of the Guidance and Counseling Services are the following:

1. Help students make maximum use of educational opportunities that will enable them to develop their potentials and become effective members of the society; and
2. Improve the ability of the student to understand himself and his environment so that he can grow in the direction towards the attainment of greater personal satisfaction and adjustments in the light of accepted social and moral issues.

Services offered by the Guidance and Counseling Program include testing services, student orientation, student survey, guidance and counselling services, training programs, outreach services and other related activities.

#### c. Student Activities

For wholesome social attitudes of cooperation, responsibility, creativity and leadership, the University recognizes some extra or co-curricular organizations that supplement the academic as well as vocational efficiency of every student. In 1986, there were eleven (11) extra-curricular organizations listed, thirteen (13) intra-curricular organizations or techno-clubs, two (2) government based movements and five (5) religious organizations.

These organizations either sponsored student leadership seminars, film showing, beautification drives, fund raising campaigns, symposium, debates, etc.

Students were also encouraged to participate in various activities such as speech festival, science quiz, intramurals and other school related activities.

#### d. Professional Board Examination

Out of the 180 teachers who successfully hurdled the 1985 Professional Board Examination of Teachers from the Division of Benguet, 60% of it or 108 teachers were graduates of the University's College of Teacher Education.

Also, in 1986, of the 61 registered for the 1986 Teachers Board Examination, 70% or 41 of the BSU graduates passed the examination.

#### Faculty Development and Management

The Manpower Development of the University is governed by an intensive faculty and staff development program approved under the Board of Regents Res. No. 63 s. 1986 and issued under Administrative Memorandum No. 17 s. 1986. The policies and operating guidelines have been issued to give equal opportunities to all members of the faculty and staff.

During the year under review, the Board of Regents through Res. No. 64 s. 1986 also approved the creation of professorial chairs in the University as mandated by P.D. 2010. Candidates for professorial chairs should have at least a rank of Assistant Professor or higher and should meet the criteria set for the purpose.

In effecting the intensive manpower development program, the University sent 45 faculty members to pursue post graduate courses within and outside the Philippines in 1986: 21 for Masteral Degrees and 24 for Doctoral Degrees. Some faculty members were sent for short-term trainings.

#### Curriculum Development

Curricular offerings in the University have always been subject to revision based on criteria adopted and implemented by the Technical Panel for Agricultural Education (TPAE).

Revisions and enrichments of course syllabi, laboratory manuals and course outlines were done to suit courses in all degree programs to the needs of the students and the society as well. Likewise, instructional and audio-visual aids were also prepared.

The University Board of Regents has added, revised and improved some of the curricular offerings. Effective SY 1986-87, the Board of Regents approved the offering of the following courses: Master of Science in Teaching Physical Science and

Master of Arts in Physical Education (Approved under Board Res. No. 25 s. 1986), Special Physical Education Curriculum leading to a Certificate in Physical Education (Board Res. No. 26 s. 1986), Bachelor of Science in Agricultural Engineering major in Postharvest Technology (Board Res. No. 27 s. 1986), Bachelor of Science in Home Economics major in Nutrition and Dietitics and Bachelor of Science in Nutrition and Dietitics (Board Res. No. 65 s. 1986).

Also, under Board Res. No. 28 s. 1986, the One-Year Agricultural Mechanics Course had been changed to Applied Technology with 4 areas of specialization. The Bachelors' Degree of Agribusiness Management (BABM) was also changed to Bachelor of Science in Agribusiness (BSAB) (Board Res. No. 50 s. 1986). Both changes in nomenclature were effected SY 1986-87.

#### Physical Facilities and Development

The University was able to purchase additional equipment such as typewriters, laboratory equipment and apparatuses in 1986. However, it was noted from all the colleges that there is a dire need to purchase additional office and laboratory equipment based on the expanding population/clienteles of each college.

In infrastructure, Phase I of the Library Complex was completed and occupied. Phase II has been scheduled to be constructed in 1987.

The Graduate School has been authorized through Board Res. No. 47, s. 1986 to create a Graduate School Development Fund with the application and the out-of-school state fees of foreign students, as seed money for the purchase of foreign books, journals, periodicals and magazines.

#### Researches and Publications

<u>Completed Researches</u>	<u>Researcher/s</u>	<u>Funding Agency</u>
<u>College of Agriculture</u>		
a. Efficacy of Copac E Against Cabbage Black Rot	L.M. Villanueva	BASF
b. Biology and Control of M. incognita Attacking Celery	S.P. Milagrosa L.M. Villanueva	PCARRD

<u>Completed Researches</u>	<u>Researcher/s</u>	<u>Funding Agency</u>
c. Crop Protection Studies on Garden Pea	E.V. Cardona L.M. Villanueva	BSU
d. Field Efficacy of Nomolt 5 EC Against Diamondbackmoth of Cabbage	E.V. Cardona	HOECHST
e. Crop Protection Studies on Highland Vegetables	E.V. Cardona	PCARRD
f. Screening of Insecticides Against Diamondbackmoth	B.S. Ligat	CARFI
g. Studies on Soft Rot Disease of Cabbage, Chinese Cabbage and Lettuce	J.S. Luis A.L. Nagpala	PCARRD
h. Efficacy of Diaract 5 EC Against Diamondbackmoth of Cabbage	L.M. Colting	Planters
i. Screening of Fungicides Against Potato Late Blight	B.S. Ligat	ALDIZ, Inc.
j. Growth and yield of Chrysanthemum as Affected by Growth Retardants	B.L. Ladilad A.G. Ladilad	BSU
k. Compilation and Analysis of Socio-Economic and Anthropological Studies Related to Agriculture in the Cordillera Region	W.D. Dar F.D. Domingo P. Lubrica	MAF
l. Economics of Soil Erosion and Conservation: The Case of the Magat Watershed	H.A. Francisco	PCARRD/PIDS

College of Arts and Sciences

a. Impact of Non-degree Training Programs on the Performance and Rank Promotion of Teacher Participants in Region I	Jonathan Bayogan Marcos Buliyat	NRCP
---	------------------------------------	------

<u>Completed Researches</u>	<u>Researcher/s</u>	<u>Funding Agency</u>
b. Effect of Student Evaluation on Teacher Performance in the College of Arts and Sciences	Esther R. Hufana	Dean's Office
c. Pagsasalin ng Mga Akda sa Kagamitang Pagtuturo sa Pilipino 12		Department of Humanities
d. Pagtitipon ng Mga Halimbawang Komposisyon Para sa Gamit ng Pilipino 11		Pilipino Section
e. Humic Acid/Albatris Trial on Lettuce and Cabbage	Lorenza Lirio	Dept. of Biology

College of Applied Engineering and Technology

a. Design, Construction and Performance Test of a Pull-Type Fertilizer Applicator	Imelda Garcia/M.M. Bibal
b. Fabrication Test and Evaluation of a Stirrup-Operated Coconut Grater	Joycelyn Tegui-in/M.M. Bibal
c. Survey and Evaluation of the Different Hand Tools by Farmers in La Trinidad, Benguet	Ma. Theresa Alafriz/M.M. Bibal
d. Design, Construction and Test of a Manually Operated Cotton Gin	Alma Repalda/D. Bakilan
e. Comparison of the Performance of Three Locally Designed Hand Held Strawberry Weeders	Ma. Luisa Valencia/D. Bautista
f. Design, Fabrication and Test of a Low Cost Potato Slicer	Gaston B. Cael/M.M. Bibal

College of Teacher Education

- a. Utilization of Cabbage Into Pickles
- b. Utilization of Papaya Into Catsup
- c. Utilization of Banana Peelings Into Paste Candy



<u>Completed Researches</u>	<u>Researcher/s</u>	<u>Funding Agency</u>
d. Effect of Detergent Bar Soap to Stains		
e. Acceptability of Instant Ginger Tea		
f. Acceptability of Sweet Potato Into Pudding, etc.		

<u>On-Going Researches</u>	<u>Researcher/s</u>	<u>Funding Agency</u>
<u>College of Agriculture</u>		
a. Biovar (Race) Classification of <u>P. solanacearum</u> insolated in Benguet Province	E.B. Akiew	-
b. Identification of Viruses Affecting Strawberries in La Trinidad	E.B. Akiew	-
c. Identification of Plant Diseases Affecting Commercial Crops in Benguet Province	E.B. Akiew	-
d. Evaluation of Culture Media For Virus Free Strawberry Culture	E.B. Akiew	-
e. Mushroom Research and Development Project	L.M. Villanueva P.B. Alipit B.S. Tad-awan J.S. Cadaweng	BSU
f. Identification, Isolation and Purification of Viruses Attacking Crucifers and Cucurbits	J.S. Luis A.F. Bulacso	PCARRD
g. Screening of Insecticides Against Diamondbackmoth	B.S. Ligat	CARFI
h. Efficacy of Some Fungicides Against Potato Late Blight	L.M. Villanueva L.D. Lando	CIBA-GEIGY
i. Fungicidal Evaluation Against Potato Late Blight	E.B. Akiew	SHELL
j. Field Efficacy of Some Insecticides Against Diamondbackmoth of Cabbage	E.V. Cardona	SHELL

<u>On-Going Researches</u>	<u>Researcher/s</u>	<u>Funding Agency</u>
k. Technology Assessment of Selected Vegetables in Benguet and Mt. Province	L.N. Tagarino Z.N. Ganga H.A. Francisco	PCARRD/IDRC
l. Hybridization and Testing of Garden Pea	L.L. Tandang	BSU
m. Breeding Program for Garden Pea	L.L. Tandang E.T. Basco	IPB
n. Breeding Program for Snap Bean	L.L. Tandang E.T. Rasco	IPB
o. Breeding Program for Potato	L.L. Tandang E.T. Rasco	IPB
p. Flower Induction and Seed Production of Chinese Cabbage, Cauliflower and Carrots	P.E. Toledo	BSU
q. Regional Trials on Solanaceous Crops and Crucifers	P.E. Toledo	BSU
r. Establishment of Farming Systems Involving Semi-Temperate Fruit Trees and Vegetables	P.T. Jaramillo	BSU
s. Biological Performance of Azolla App. at La Trinidad, Benguet	Elmore Lumpay E.K. Mamaril	UAP
t. Studies on Soil and Water Management in an Agro-Forestry Area	R.D. Colting	BSU
u. Research and Production of Asparagus	Soil Science Department	BSU
v. Potentials of Azolla as Fertilizer for Some Selected Highland Vegetable Crops	M.M. Marquez	BSU
w. Orna-Lori Research and Development Program	A.G. Ladilad B.D. Ladilad	BSU

<u>Proposed Researches</u>	<u>Researcher/s</u>	<u>Funding Agency</u>
<u>College of Agriculture</u>		
a. Crop Protection and Cultural Management Studies on Strawberry	E.B. Akiew	BSU
b. Crop Protection Studies on Selected Fruit Tree and Plantation Crops in the highlands	L.M. Villanueva	BSU
c. Rural Poverty in Ethnic Society	C.C. Consolacion H.A. Francisco	Winrock Int'l
d. Highland Seed Production and Seed Laboratory Complex	W.D. Dar L.L. Tandang F. Domingo P.E. Toledo	HADP

#### Extension and Community Services

##### College of Agriculture

The various departments of the College of Agriculture under the period in review provided extension services to the community as well as the region at large basically in two forms: free services/consultation along their various lines of specialization through open clinics and special seminars or acted as resource persons/speakers in various seminars/workshops sponsored by the University and other related agencies.

##### College of Arts and Sciences

The College of Arts and Sciences is supportive of the extension program of the University. It provided dissemination of information through seminar/workshops, case studies and cultural presentations.

##### College of Teacher Education

The Department of Home Economics offered non-formal education courses like baking, tailoring, dressmaking, weaving and food processing as well as coordinated the Nutrition Programs of Benguet in collaboration with the Provincial Nutrition Council.

The Department of Agricultural Education likewise conducted review classes for the Teachers Board Examination.

### College of Veterinary Medicine

The College of Veterinary Medicine rendered free services to livestock raisers in the community and adjacent areas. Such services included vaccination, laboratory analysis, care, management and control of animal pests and diseases including insemination.

### College of Applied Engineering and Technology

The College of Applied Engineering and Technology provided the following services to BSU Faculty and Staff and other clientele from the community: carpentry services, home appliance repair services and auto repair services.

### Cultural and Sports Development

#### a. Cultural Development

Cultural development has been instituted in courses offered in the University like the appreciation for human values and cultural heritage, more particularly in the socio-cultural heritage of the various ethnic tribes of the Cordillera provinces.

The College of Arts and Sciences organized "The Highland Cultural Dance Troupe" which consists of students from the Cordillera Provinces. The group is always tapped to perform different cultural dances during student activities and special occasions in and out of the university.

#### b. Sports Development

Physical Education courses are required of all curricular degree programs in the University, more specifically in the first and second years.

The University encourages students to participate during sports festivals such as Inter-P.E. Competitions, Intramurals, Provincial Meets as well as regional and national sports competitions.

In 1986, BSU garnered the Over-All Championship in the State Colleges and Universities Athletic Association Meet (SCUAA) held in the University.

### Special Programs and Projects

The University is involved in production projects through crop and animal diversification and automotive repairs.

The College of Agriculture for instance, carried out its production function through the following projects: cattle, swine, poultry, ornamental production, mushroom, pomology and other crop production. The College of Veterinary Medicine is also involved in livestock project; the College of Teacher Education, catering services; and the College of Applied Engineering and Technology, crop production and auto repair.

## D. CULTURAL AND SPORTS DEVELOPMENT

## Library Services Development

The University Library Services (ULS) is a unit under the Vice-President for Research and Development, which helps build capabilities and competence among students, faculty, staff and researchers through a well-stock, relevant and quality library collections.

## a. Library Complex

Phase I of the newly constructed Library has been completed and occupied since the first semester of 1986. With the transfer to the new building which is more spacious and conducive to research work, the attendance and circulation statistics of users showed an increase of 38 percent as compared to the previous library record.

In addition to this, the Faculty-Student Library Committee (FSLC) was organized and operationalized. The committee works closely with the ULS to come up with an efficient and effective Library services to the University.

## b. Books/Periodicals and other materials received/acquired by the University are the following:

i.	Books	No. of Volumes
	College	658
	Secondary	656
	Elementary	132
ii.	Theses	72
iii.	Pamphlets	355
iv.	Serial Title	43
	Gifts	31
	Exchange	6
	Subscription	6

## c. Organization of Library Materials

i.	Title Classified	512
ii.	Books accessioned	850
iii.	Books pasted with date due and pockets	1650
iv.	Added Entries	700
v.	Cards and other records typed	850

vi. Books repaired	1355
vii. Magazines recorded	110
viii. Updating the vertical file materials	351

d. Library Services Offered

- a. Library Orientation. Lectures and library tours were undertaken for the freshmen college students during the first semester 1986-87.
- b. Book talk activity. A series of lectures for all year levels in the Secondary department to enhance the importance of the library and effective use of the library resources were done.
- c. Intra-library access. For 1986, there were 1,586 researchers who came to utilize the BSU Library while 415 students/faculty went to use other libraries outside BSU.
- d. Reproduction services. A total of 51,250 copies were xeroxed as official documents extended to the different departments/offices/units of the University.
- e. Preparation of literature searches and other bibliographies.
  - 1) Two (2) volumes of the Current Awareness Services (CAS) with the Selective Dissemination of Information (SDI) by fields of interest to the users were published.
  - 2) Two (2) volumes of the Index to Current Periodical Articles (IPCA) were likewise produced to assist users in the latest articles found in periodicals.
- f. Establishment of linkages. Five (5) foreign agencies agreed to exchange publication with the University while eight (8) local agencies sent their publications on exchange basis.

Cultural Development

By virtue of Presidential Decree No. 2010 dated January 12, 1986, converting the then Mountain State Agricultural College (MSAC) into Benguet State University (BSU), the Special Cultural Office was created to gather, collate and synchronize the teaching, preservation and integration of the socio-cultural heritage of the

various ethnic tribes of the mountain provinces into the national and social milieu.

a. Cultural Museum

A total of two hundred and forty three (243) artifacts from the Cordillera provinces has been collected since the Cultural Museum of the University was established.

b. Cultural Library

A Cultural Library within the Museum has been set-up which showcases publications on the socio-cultural heritage of the Cordillera tribes. A total of two-hundred and twenty-five (225) books and one hundred (100) periodicals have been collected.

c. Professorial Chairs

A request to the four Cordillera provinces has been made to sponsor professorial chairs in the University along the socio-cultural fields as provided by PD 2010.

### Sports Development

The Board of Regents approved Res. No. 26 s. 1986 for the offering of a special physical education curriculum leading to a certificate in Physical Education and Master of Science in Physical Education effective 2nd Semester, SY 1986-87.

In support of this new curricular offerings, the University was able to develop the following sports facilities: spacious playground with complete courts for different ball games, gymnasium, grandstand, multi-purpose auditorium.

In 1986, the University hosted two major athletic meets in Region I: The State Colleges and Universities Athletic Association (SCUAA) and the Ilocos Region Athletic Association (IRAA).



## RESEARCH AND DEVELOPMENT

Research and development activities emanates from the different departments/units in the University. Through the years of continued quest for technology development, BSU has continuously evolved technologies that are now being adopted by the farmers at the same time to utilize and enrich the instruction and strengthen the extension and production programs of the University.

For research and development ( R & D) efforts to be systematic and relevant to the needs of the University and the region as well, R & D activities fall under the office of the Vice-President for Research and Development (OVP - R & D). The OVP - R & D has institutionalized a cooperative relationship to enhance a more productive and functional program of linkages and to enable the sharing of resources for an effective operation. To this effect, a Research and Extension Council (REC) has been created to act as the policy making/working body for research and extension and shall review and approve research and extension programs, thrusts, directions and projects.

## Research And Technology Refinement

Research Activities

## A. Completed Researches

<u>Title of Research</u>	<u>Researcher/s</u>	<u>Funding Agency</u>
<u>Vegetable Crops</u>		
Regional Evaluation Trials on Solanaceous Crops	P. Toledo	PCARRD/BSU
Garden Pea Coordinated Research Program, 1st Cycle	W.D. Dar, et.al	BSU
Varietal Trials of Major Highland Vegetables in Natubleng, Buguias	W.D. Dar T. Jacaban	Ford Foundation
Vermicasting Efficacy Trials of Selected Highland Vegetables	W.D. Dar F.S. Borja	NABCOR

<u>Title of Research</u>	<u>Researcher/s</u>	<u>Funding Agency</u>
<u>Farming Systems</u>		
Establishment of Farming Systems Involving Semi-Temperate Fruit Trees and Vegetables in Sloping Areas of Benguet	J. Balaoing P. Jaramillo	PCARRD/BSU
<u>Others</u>		
Highland Rural Development Program, 1st Cycle	W.D. Dar, et.al.	Ford Foundation
B. On-Going Researches		
Mushroom Research and Development Program	P.B. Alipit L.M. Villanueva	BSU
Flower Induction and Seed Production of Chinese Cabbage, Cauliflower and Carrot	P.E. Toledo	PCARRD/BSU
Garden Pea Coordinated Research Program, 2nd Cycle	W.D. Dar, et.al.	BSU
Crop Protection Studies on Selected Vegetable Crops	E.V. Cardona, Jr.	PCARRD
<u>Fruit Crops</u>		
Multi-Location Trials of Apples in Benguet and Mt. Province	B.B. Dimas W.D. Dar	PCARRD/BSU
<u>Ornamental Crops</u>		
Highland Ornamental and Floriculture Research and Development	A.G. Ladilad B.L. Ladilad	BSU
<u>Farming Systems</u>		
Improvement and Development of Farming Systems in Highland Areas	W.D. Dar	BSU

<u>Title of Research</u>	<u>Researcher/s</u>	<u>Funding Agency</u>
Cropping Schemes Involving White Potato and Gabi	W.D. Dar	PCARRD/BSU

### Soil Resources

Study on Vegetative Terracing in Agro-Forest Areas	R.D. Colting	BSU
Study on Intercropping/Cover Cropping in Coffee-Pine Based Agroforestation Areas	B.B. Dimas	BSU
Optimizing Soil Nutrient Absorption For Mineral Fertilizer Usage	W.L. Marquez	PCARRD
Biology and Culture of Azolla	T. Merestela E. Mamaril	NAAP

### Extension And Training Services

The University attempts to share its responsibilities in the training of relevant manpower for rural development. As a research institution, BSU has to generate appropriate agri-technology and technical knowledge for the development of the Cordillera provinces.

Extension or non-formal education has always been a legitimate function of the various colleges, centers and projects of the University. Usually, extension is decentralized to the colleges, centers and projects but its administration is centralized and institutionalized through the Extension and Training Office for effective monitoring, coordination and evaluation.

Extension and training programs do not overlap nor duplicate the legitimate extension agencies but rather supports and reinforce their extension capability.

In 1986, the Extension and Training Service of the University offered skills and training courses in handicrafts, food processing, agro-forestry, organic farming, bamboo production, vegetable production, root crops production and poultry and swine production to about 625 farmers. Outreach projects such as organic farming, highland farming system, bamboo production, plant and animal clinic services including soil analysis services were offered to the highland communities/farmers.

The Extension and Training Office strengthened its institutional linkages for tie-up projects with other government and private agencies in the Cordillera.

### Publications And Media Services

The Publications and Media Services (PMS) is essentially supportive and closely tied up with the over-all R & D programs of the University. Its supportive role consists of disseminating the products of research through media, both print and broadcast.

The primary objective of the Publications and Media Services is to publish or prepare for publication results of researches directly or indirectly under the aegis of the University to be used for instruction and extension activities.

The PMS came out with two (2) issues of the BSU Research Journal, two (2) issues of the BSU Newsletter, and one (1) issue of the BSU Information Brochure. It assisted students in editing their manuscripts including various offices of the University like typing, mimeographing, scanning, illustrating and binding needs.

### Specialized Research Units

#### Highland Agricultural Research Center (HARC)

HARC was primarily established to serve the R & D needs of highland agriculture. Its major functions are to plan, coordinate, implement and monitor agricultural and natural resources researches which are supportive to the development of the mountain provinces.

#### Regular Programs:

##### A. Research Monitoring Program (RMP)

The RMP coordinated the 6th Annual Research Review and Evaluation of Completed and On-Going Researches on Agriculture and Related Topics being undertaken in the region. In collaboration with PCARRD, the said review have identified technologies as well as those ready for verification and dissemination. Moreover, HARC through RMP closely assisted PCARRD in the revision, submission and endorsement of research proposals for possible funding by the national government. The RMP also monitored the on-going researches for 1986 being undertaken by the HARC member agencies.

## B. Regional Agricultural Information Network (RAIN)

The RAIN provides information services for researchers, technical staff and farmers through its regular activities, namely: publications preparation and production, instructional materials development, scientific literature service, audio-visual/mass media services and training and outreach.

### Publications:

1. The Highland Express - HARC quarterly publication
2. HARC Farm Tips - quarterly publication (in-house)  
intended for change agents and end  
users/farmers
3. Technoguides - publications containing location-situation  
technologies

## C. Research Management Development Services (RMDS)

The RMDS supports special programs and activities of the consortium members through coordination of manpower development courses and attendance to seminars, workshops, trainings and conferences.

## D. Administrative Support Unit (ASU)

The ASU handles the financial records and transactions as well as provide office support services of the HARC.

### Special Projects:

#### A. Highland Rural Development Program (HRDP)

The HRDP, a Ford Foundation assisted program ended its first cycle of operation in December, 1986. For the past three years of operation, a Village Research and Demonstration Laboratory (VRDL) was established to serve as an outreach station for BSU in Natubleng, Buguias, Benguet. Field trials were likewise conducted in farmers' field with farmer cooperators.

On-farm studies conducted at the VRDL Demo Farms included comparison of effects of different inorganic and organic fertilizer combinations and application rates on yield of major highland vegetable and varietal trials of selected vegetables under local conditions.

## B. Highland Agriculture Development Project (HADP)

After several years of deliberations, the HADP will soon be implemented by the Ministry of Agriculture and Food (MAF) and other government agencies in the area. HARC will implement the research component of the project.

The signing of the Memorandum of Understanding and Loan Negotiations was done in October 1986 after an appraisal team composed of the Asian Development Bank (ADB) and International Fund for Agricultural Development (IFAD) consultants visited the proposed project sites in August 1986. The project will consist of the following:

- a. communal irrigation system-
- b. rural roads and bridges
- c. agricultural support services
  1. agricultural research
  2. agricultural extension
  3. agricultural marketing

## Northern Philippines Root Crops Research And Training Center (NPRCRC)

The NPRCRC was established to spearhead, coordinate, plan, implement and monitor root crop research and conduct trainings designed for the development of Northern Philippines, especially in the depressed areas where root crops are the main staple food.

### Research Activities

#### Title of Research

#### Researcher/s

#### Completed Researches

#### Crop Improvement Program

Results of Potato Germplasm Evaluation for Yield and Resistance to <u>P. infestans</u> in the Philippine Highlands	Z.N. Ganga, I. Gonzales, E.O. Badol, S. Gayao and H. Torres
--	---

<u>Title of Research</u>	<u>Researcher/s</u>
Preliminary Evaluation of Various Sweet Potato Cultivars in Highlands	Z.N. Ganga, I. Gonzales, and M. Dickson
Philippine Seedboard Regional Evaluation on Trial of Sweet Potato	Z.N. Ganga, I. Gonzales and M. Dickson
Philippine Seedboard Regional Evaluation Trial of Taro	Z.N. Ganga, I. Gonzales and M. Dickson

#### Crop Protection Program

Economic Evaluation of Some Commonly Used Fungicides and Frequency of Spraying Against Late Blight ( <u>P. infestans Mont de Bary</u> ) of white potato	J.C. Perez M. Babac
White Potato Late Blight Infection in Relation to Foliar Fertilizer Application	A. Basalong, R. Contada M. Babac
Identification, Characterization and Control of Postharvest Diseases of Taro ( <u>Colocasia esculenta</u> )	J.C. Perez M. Babac

#### Crop Management Program

Yield Performance of White Potato at Different Time of Fertilization	W.L. Marquez, A. Botangen, G. Tianza and J. Tukaki
Residual Effects of Applied Fertilizer On A White Potato, Chinese Cabbage Cropping Sequence	J. Tukaki, W.L. Marquez and A. Botangen

#### Seed Production/RMT Program

Agronomic Management Practices of White Potato Production Using Rooted Stem Cuttings as Planting Materials	P. Dalang C. Guitelen
Yield and Field Performance of Some White Potato Cultivars/Clones Grown from Stem Cuttings	R. Quindara, P. Dalang C. Guitelen and E.O. Sano

<u>Title of Research</u>	<u>Researcher/s</u>
<u>Postharvest Program</u>	
Field Evaluation of Cured Sprouted Potatoes	N.F. Puntawe, E.V. Bayogan and V.B. Salda
Yield, Bruising Intensity and Storability of Cosima Tubers as Influenced by Dehauling	V.B. Salda E.V. Bayogan
Acceptability of Pickled Marble Potatoes	E.V. Bayogan E. Ticguingan
Bulkhandling and Containerization Practices in Potatoes and other Highland Vegetable Crops	E.V. Bayogan V.B. Salda
Storability of Taro Under Highland Conditions	E.V. Bayogan V.B. Salda
<u>Socio-Economic Program</u>	
Profitability of Table White Potato Production Using Rooted Stem Cuttings	B.T. Gayao, P. Dalang, C. Guitelen, H. Quindara and E.O. Sano
Profitability Analysis on Table White Potato Using TPS	B.T. Gayao, F. Balog-as, M. Wallace and E.O. Sano
Cost and Return Analysis Evaluation of White Potato Agribusiness Production Project in La Trinidad Valley	B. Gayao, G. Tianza, L. Pacuz, E. Sano, F. Balog-as, M. Valeriano
Economics of White Potato Production in the Lowlands	B.T. Gayao, M. Wallace, E.O. Sano and E.T. Balaki
Price Trends of Vegetables Inputs in the Highlands from 1972 to 1984	B.T. Gayao
<u>Training and Extension Program</u>	
White Potato On-Farm Trial Planting at Calauan, Laguna	J. Dati E.T. Balaki



## BSU-IPB Highland Crops Research Station (HCRS)

The BSU-IPB Highland Crops Research Station (HCRS) was jointly established by the UP at Los Baños, through the Institute of Plant Breeding of the College of Agriculture and the Benguet State University to undertake breeding researches on vegetables, fruits, ornamental and other crops.

Research activities in the station dealt on variety development of vegetable crops particularly bush and pole snap beans (Phaseolus vulgaris), field and garden pea (Pisum sativum) and potato (solanum tuberosum).

### Highlights of Research Activities

#### A. Variety Development of Snap Beans and Peas

Research activities particularly on variety development were done on bush and pole snap beans and garden pea and field peas. Activities covered germplasm evaluation, hybridization, line selection and variety evaluation.

Variety evaluation under high elevation was continued in bush and pole snap bean and garden pea. Wet season adaptation trials on pole snap bean and garden pea were also done.

#### B. Germplasm Introduction, Preliminary and Advanced Evaluation of white Potato for High Elevation.

For the year 1986, 132 accessions in tuber forms, 36 tubers families and 177 in TPS forms were received and/or collected. The total germplasm being maintained at present in tuber form is 1079 clones.

In testing resistance to Pseudomonas solanaceum Biovar II in La Trinidad, Benguet, six (6) clones were found highly resistant each with 100% survival. One resistant clone, Cornell #44-34 is now an entry in the National Cooperative Test (NCT). It has a stable yield performance, erect growth habit and good late blight resistance.

## GENERAL ADMINISTRATION

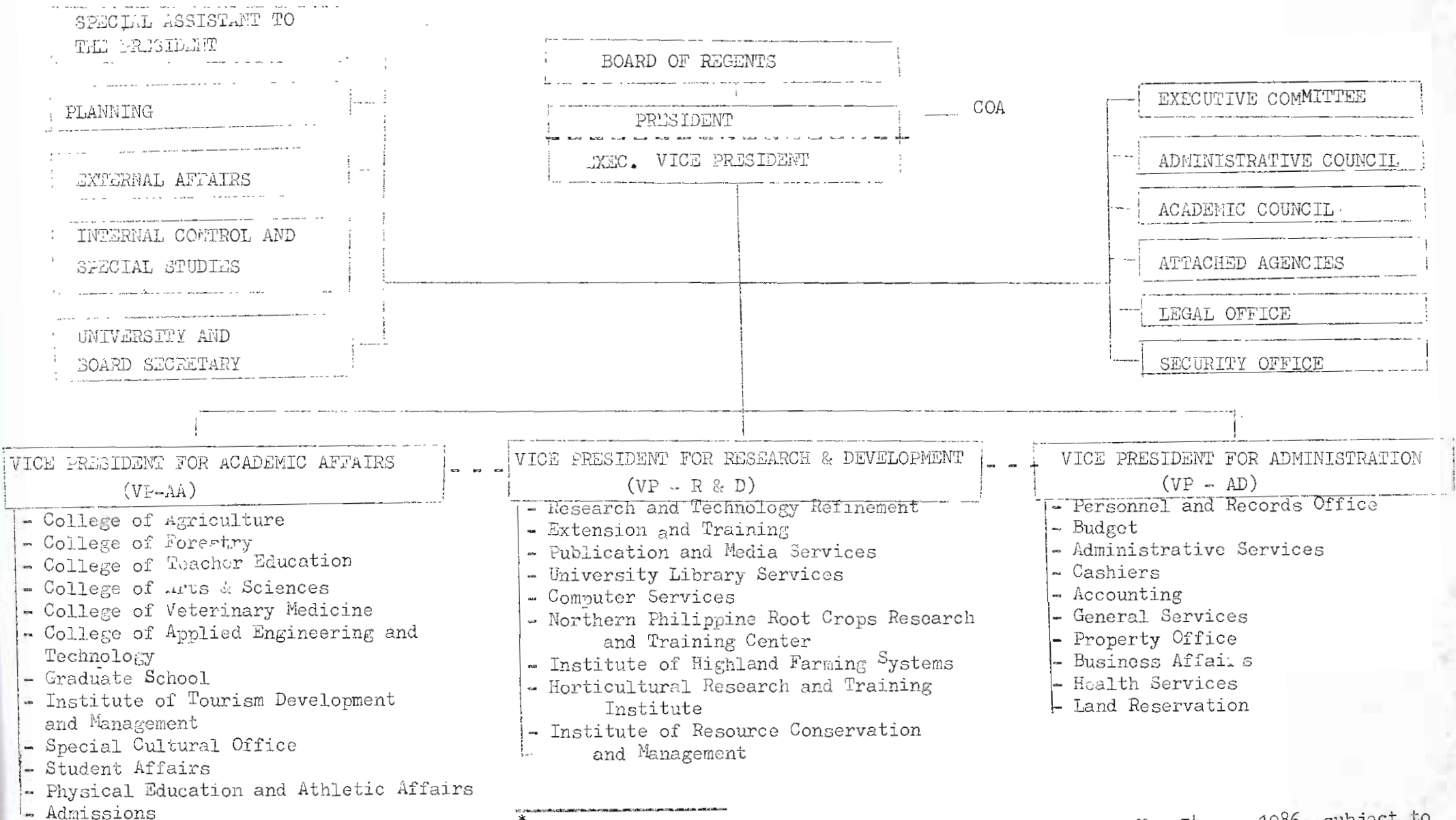
The Administration facilitates the myriad functions in the over-all attainment of the University's goals and objectives.

With its commitment to serve in the interest of public service, the Administration strives towards the attainment of economy, efficiency and effectiveness in the administration, planning and monitoring of the financial aspects of the organization. Moreover, it aims to promote a sound internal control system and provide the least time, effort and cost in the operational procedures without prejudice to public interest. Finally, it strives to establish harmonious relationship among personnel.

In specific terms, the following programs and projects were instituted by the Administration during the period under review.

1. Developed a systematic procedure in communications flow, cash disbursement flow, requisitioning and procurement, etc., for efficient and prompt delivery of support services;
2. Internalized within each faculty and administrative employee attitudes, habits and practices of economy;
3. Maintained in good condition all physical facilities of the university;
4. Instituted an effective and consistent security measures in the campus;
5. Provided wholesome and efficient medical services to personnel and students and extended such services to the community;
6. Provided legal assistance to faculty and staff members as well as to the student body;
7. Developed and implemented a personnel recruitment, evaluation and development procedure including appropriate promotion and rewards scheme;
8. Applied a systematic control over the creation, maintenance and disposition of records in order to serve documents of permanent value (as well as avoid the creation and maintenance of unnecessary records) and instituted procedures in the filing of records to enable their easy retrieval; and

BSU ORGANIZATIONAL CHART\*



\* APPROVED by the University Board of Regents under Res. No. 34, s. 1986, subject to further refinement and/or realignment of some offices as the need may arise and recommended by the University Council.

9. Established definite boundary lines and technical description of the present land holdings of the University and initiated proper utilization and acquisition of lands needed for the various programs envisioned in the Institution.

#### BSU Board Of Regents

By virtue of P.D. 2010 dated January 12, 1986, declaring the elevation of the then Mountain State Agricultural College into Benguet State University, the Board of Trustees of the former was reconstituted as the Board of Regents.

The Board of Regents held eight (8) meetings from March to December 1986. Most of the meetings were held at the MECS Central Office in Manila, one was held in Baguio City and another at the Pangasinan State University in Bayambang, Pangasinan.

Pursuant to MECS Memorandum No. 35, s. 1986, Deputy Minister Minda C. Sutaria was designated by the Minister as the Presiding Officer of the Board.

During the period under review, the Board promulgated ninety eight (98) resolutions. Some of the salient resolutions passed and approved by the Board that bear on policy, fiscal management and matters that relate to the various academic programs, research, extension and production projects of the University were already incorporated to various components of this Annual Report.

#### Personnel Management

The Personnel Office serves the faculty and staff of the University by issuing documents as service records, certifications, recommendations for scholarships and training grants and assisted employees in filling up application for leave, loan, medicare, retirement, workmen's compensation, claims, etc.

##### A. Faculty and Staff Profile

As per record of the Personnel Office there are 596 faculty and staff in the University excluding student assistants. Of this, 267 are faculty members, 240 are non-teaching personnel, 14 substitutes and 75 casual employees.

Among the faculty, 26 had Ph.D./Ed.D degrees, 86 with MA/MS, 5 Doctor of Veterinary Medicine and 148 with either AB or BS degrees.

B. Personnel Actions

A total of nineteen (19) appointments was prepared during the year broken down as follows: original - 9; re-employment/re-appointment - 4; and promotion - 6 aside from the appointments of casual employees and student assistants.

C. Personnel Records

Personnel records were maintained, reviewed and updated as effected by changes in position, salary, status and other relevant information.

- a. Service records were updated twice due to the following: 1) conversion of the then MSAC into BSU; and 2) increase in salary pursuant to National Compensation Circular No. 41 which took effect on July 1, 1986; 3) updating of service records of faculty and staff promoted during the year, including casual employees appointed to plantilla positions.
- b. The revision of leave records to comply with the monthly crediting of leaves earned has already started. Approve leave of absences and undertimes incurred by employees were also posted on their respective leave record forms.
- c. Notices of salary adjustments were typed together with the plantilla of personnel showing the computed annual difference and the adjusted salary.

D. Welfare Services

The Personnel Office assisted University personnel in accomplishing forms in connection with the processing of their claims and/or benefits due them such as: vacation, sick leave or maternity leave; medicare claim; GSIS salary and policy loan; retirement; terminal leave; and workmen's compensation.

E. Others

The Personnel Office extended assistance in implementing the new programs of the Civil Service Commission.

It has adopted the updated guidelines and requirements contained in Memorandum Circular No. 4, dated June 17, 1986. These requirements were:

- a. Compliance with the Annual 5-day vacation leave as mandated under Executive Order 1077;
- b. Confirmation of terminal leave by the Civil Service Commission before payment;
- c. Dissemination of the provision allowing the commutation of accumulated leave in excess of 300 days upon retirement or resignation.

In the same year, the University granted eight (8) employees one (1) year leave of absence without pay, some of whom went to work abroad. This new policy is authorized under CSC Res. No. 85-444, dated October 17, 1985.

#### Health Services

- A. Routine Health Check-Up of Students, Faculty and Employees of BSU.

About 90% of the student population underwent physical check-up during the year. Most of those who abstained from this are the old students especially the seniors. The freshmen and the sophomores are the most obedient ones. This year about 1,900 college students and 1,800 elementary and high school students were examined.

In compliance with MECS Memo, all BSU personnel had been asked to undergo chest X-Ray every two years and yearly physical check-up. Out of 600 faculty and employees of BSU, 450 had physical examination and 363 underwent chest X-Ray.

- B. Issuance of Health or Medical Certificates

This year, 240 medical certificates were issued to students and personnel for scholarships, military training, scouting, athletic competitions, quiz contests, seminars or workshops, sick leave and even disability retirement.

Several BSU graduates likewise asked for medical certificates for their application for jobs.

- C. Medical Orientation/Lectures/Advice

During the celebration of Medicine Week and Nursing Week in 1986, the health staff of the University were invited as guest speakers.

Short lectures on topics like how to take blood pressure, how to use the nasogastric tube and the advantages of intravenous infusion were given to students in the University.

#### Agri-business Production Projects

Various production projects of the University have been placed under the Business Affairs Division which was created under Board Res. No. 24, s. 1986 and effected through Administrative Memorandum No. 11 s. 1986. It is mandated to formulate policies related to agri-business production and monitor all the various production projects.

For 1986, the Division was able to plant 25,511 sq m of land in the swamp area and in Balili with assorted crops valued at ₱79,817.00 and from other sources, ₱375,000.00 or a total of ₱454,817.00.

Income generated from the other farming projects of the University had a total of ₱288,513.00.

#### Land Reservation

To properly secure the land reservation of the University, the Administration was able to appropriate funds for the fencing of the boundary lines. To this effect, a distance of 3,000 meters were already fenced. Surveys were conducted by the land reservation team on all boundary lines and determined the location of monuments. Missing monuments were replaced with MSAC marked monuments. As a result of the survey, at least 71 private lands were not inside the University Reservations.

To discourage illegal squatting within the Land Property of the University, the Administration through the Land Reservations Office assigned one (1) security guard to conduct regular patrol in the land reservation. As a result, 11 cases of illegal entry were stopped.

The office also coordinated with the security force assigned in the main gate of the University regarding entrance of construction materials in which concerned individuals shall secure permits before entering the main campus. Thirty cases have been refused to enter because of lack of necessary permits.

### Infrastructure Program

During the FY 1986, the Benguet State University implemented four various infrastructure programs in support of its quadruple functions, namely: instruction, research, extension and agri-business production.

The following infrastructure projects have been started/completed: Library Phase II, Land Development which include backfilling of the right side of the gymnasium and fencing of land reservation and greenhouse.

For the purpose of incoming infrastructure projects of the University, the Pre-Qualifications, Bids and Awards Committee (PBAC) was reconstituted through Board Res., No. 92 s. 1986 pursuant to P.D. No. 1594.

### Appropriation/Fiscal Support For 1986

The internal operating budget of the Benguet State University for the Fiscal Year 1986 beginning January 1 to December 31 was ₱22,313,000.00 broken down as follows: Total Current Operating Expenditures - ₱18,213,000.00 and Capital Outlays - ₱4,100,000.00.



## INSTITUTIONAL PROBLEMS/RECOMMENDATIONS

## Problems Encountered

1. As has been in the past years, instruction in all Colleges and functions of all units had been hampered by the inadequacy of equipment, laboratory and office supplies.
2. Rampant stealing in different projects/buildings had been observed for the past few years.
3. A very critical problem is lack of books/periodicals due to insufficient funds allotted for library acquisitions.
4. It was noted that enrollment in all levels decreased more particularly on agricultural courses.
5. Compensation rate and scheme for non-teaching and research personnel is restrictive.
6. Research and extension funds had been charged to other unprogrammed and not related activities reducing the amount intended for research and extension activities.
7. Distribution of scholarships/grants among the different units of the University was not fairly given.
8. Skills training programs for technical units in the University seemed to be inadequate.
9. Inadequate housing facilities for faculty and staff is also a pressing problem.
10. Lack of manpower and medical supplies and paraphernalia of the University clinic hindered effective and efficient medical services for personnel and students.
11. Lack of irrigation and drainage facilities for the different crop production areas have resulted to decreased profits generated from such endeavors.

## Recommendations

1. Appropriation for the maintenance and Operating Expenses including equipment outlay for the University has to be increased.
2. Strategic distribution of security guards shall be implemented. Likewise, the amount allocated for the hiring of security guards shall be increased to reinforce the existing security force of the University.
3. Provision of adequate, practical and workable budget to improve book collection is recommended. Furthermore, SCU's in Region I shall foster closer cooperation and collaboration regarding cooperative book acquisition and intra-library loan and access.
4. Committees should be organized to visit different secondary schools around Benguet to popularize BSU. Moreover, BSU should be allowed to offer courses other than Agriculture to increase enrollment.
5. Reasonable salary rates and compensation scheme for non-teaching and research positions shall be immediately implemented.
6. Requisition/purchase must be obligated against funds allotted for a specific project and should not be diverted whatsoever.
7. All faculty and staff of the different units shall be given equal opportunity to avail of scholarships. Likewise, the Administration shall program personnel to undergo such study leave so as not to jeopardize the operation of the mother unit/s of the grantee/s.
8. All technical departments should undergo skills training program in order to upgrade and improve the quality of instruction.
9. Provision of housing facilities are essential to hold qualified personnel.
10. Construction of an Infirmary is highly recommended. Likewise, additional physician shall be hired and medical purchases shall be increased.
11. Funds must be appropriated for the construction of an irrigation and drainage facilities to insure profitability of the different crop production projects of the University.

## APPENDICES

Table 1. Enrollment by Level, SY 1986-87.

Academic Programs	Summer	1st Sem 1986-87	2nd Sem 1986-87
1. Graduate Programs			
Ph.D. in Agricultural Science	22	35	39
Master of Science	108	134	130
2. Undergraduate Programs			
BS in Agriculture	182	426	379
BS in Agric'l Education	298	516	472
BS in Home Economics	116	253	169
BS in Nutrition & Dietitics	-	-	70
BS in Agric'l Engineering	29	107	103
BS in Forestry	92	149	143
BS in Animal Technology	27	101	93
Doctor of Veterinary Medicine	-	-	5
BS in Agri-Business	68	109	100
SUB-TOTAL	942	1830	1703
3. Post Secondary/Non-Degree Programs			
Farm Machinery Technology		23	23
Carpentry and Wood working Tech.		3	3
Agro-Forestry		9	7
Agri-Mechanics		26	-
SUB-TOTAL		61	33
4. Secondary		934	934
5. Elementary		761	761
6. Kindergarten		47	47
GRAND TOTAL	942	3633	3478

Table 2. Summary on number of undergraduate students by province  
(Second Semester 1986-87).

Province	Total	Rank
1. Benguet	1086	1
2. Mt. Province	236	2
3. Pangasinan	97	3
4. La Union	42	4
5. Ilocos Sur	39	5
6. Ifugao	35	6
7. Nueva Vizcaya	34	7
8. Kalinga-Apayao	32	8
9. Abra	21	9
10. Tarlac	14	10
11. Isabela	9	11
12. Ilocos Norte	6	12.5
13. Zambales	6	12.5
14. Metro Manila	5	15.5
15. Cagayan	5	15.5
16. Quirino Province	5	15.5
17. Aurora Province	5	15.5
18. Laguna	3	18
19. Occidental Mindoro	2	19
20. Vietnam (Foreign Country)	1	25.5
21. Oriental Mindoro	1	25.5
22. Cavite	1	25.5
23. Nueva Ecija	1	25.5
24. Camarines Sur	1	25.5
25. Cotabato	1	25.5
26. Pampanga	1	25.5
27. Negros Occidental	1	25.5
28. Bukidnon	1	25.5
29. Rizal	1	25.5
30. Bulacan	1	25.5
31. Sultan Kudarat	1	25.5
GRAND TOTAL	1694	

Table 3. Graduates by level, SY 1985-86.

Academic Programs	SY-1985-86
1. Graduate Programs	
Ph.D. in Agricultural Science	-
Master of Science	13
2. Undergraduate Programs	
BS in Agriculture	51
BS in Agric'l Education	130
BS in Home Technology	40
BS in Agri-business	16
BS in Animal Technology	3
BS in Agric'l Engineering	16
BS in Forestry	18
SUB-TOTAL	274
3. Post Secondary/Non-Degree Programs	
Agri-Mechanics	17
4. Secondary	213
5. elementary	124
GRAND TOTAL	628

Table 4. Summary list of undergraduate scholarships or grants for the 1st Semester SY 1986-87.

Scholarships/Grants		Number of Scholars/ Grantees
I. National Food and Agriculture Council		2
II. Benguet Foundation Incorporated		1
III. National Integration Study Grant Program		28
IV. Selected Ethnic Group Education Assistance Program		10
a. College level	7	
b. Secondary/High School	3	
V. State Scholarship Program		1
VI. Study Now Pay Later Plan		
a. Social Security System	23	
b. Government Service Insurance System	2	
c. Philippine National Bank	7	
d. Land Bank	1	33
VII. Administration		
a. Highland Cultural Troupe	22	
b. Citizen Military Training	14	
c. Mini-band (Secondary)	30	
d. GLEE Club	30	
e. Citizen Army Training (Secondary)	14	
f. Mountain Collegian	3	
g. Student Supreme Council	7	
h. Athletics	-	
i. Academic Scholars	-	120
VIII. Barangay Scholars		67
GRAND TOTAL		195

Table 5. Student services extended by the Guidance and Counseling Services.

Services Offered	No. Of Clientele/s
1. Testing Services: High School	284
College	439
2. Freshmen Orientation	441
3. Student Deficiencies Survey and Follow-Up (1st Sem)	755
4. Student Deficiencies Survey and Follow-Up (2nd Sem)	808
5. Student Personal Data Forms	500
6. Group/Individual Guidance Services	120
7. Students Profile	1824
8. Peer Facilitators Training Program	35
9. Counseling: Emotional/Personal	56
Students w/ failing grades	20
10. Follow-Up: Home visitation	35
Hospital Visitation	17
11. Drop-outs/transferees based on interviews	32
12. Outreach services	32

Table 6. Number of cases served by the Health Services Division.

Population	1986
Students	1074
Faculty/employees	760
Number of dependents	171
Referrals to outside agencies	31
Outsiders	21
<b>GRAND TOTAL</b>	<b>2057</b>

Table 7. List of recognized student clubs/societies/organizations for SY 1986-87.

Extra-Curricular Organizations	
1.	Supreme Student Council (SSC)
2.	National Grantees and Scholars Organization (NGSO)
3.	CMT Spearhead Fraternity
4.	GLEE Club
5.	League of Allied Universities (LAU)
6.	Student Dynamic Organization (STUDY)
7.	Highland Cultural Troupe
8.	Benguet Youth in Solidarity
9.	Benguet Federation of Students
10.	Peer Facilitators Club
11.	BIBAK Organization
Intra-Curricular Organizations/Techno Clubs	
1.	Future Farmers of the Philippine Collegiate Chapter (FFPCC)
2.	Future Agricultural Homemakers of the Philippines College Chapter (FAHP)
3.	Future Agricultural Educators Society (FAGES)
4.	Future Foresters Society (FFS)
5.	Philippine Society of Agricultural Engineers (PSAE)
6.	Veterinary Science Club (VSC)
7.	Kapisanan ng Agham Panlipunan (KAP)
8.	Agri-business and Economic Major Society (ABEMS)
9.	Math-Physics-Statistics Society (MPSS)
10.	Society of Weed Science, Entomology and Pathology (SWEEP)
11.	Society of Animal Science (SAS)
12.	Rural Development Volunteers Club
13.	Agro-Horti Society
Government-Based Movements	
1.	Youth Community Service Club (YCSC)
2.	Highland Youth Movement
Religious Organizations	
1.	Baptist Youth Impact
2.	Campus Crusade for Christ (CCC)
3.	Collegiate Associations for Research of Principles (CARP)
4.	Christian Brotherhood International
5.	Student Catholic Action (SCA)



Table 8. Faculty/Staff development program by specialization, by institution and by number enrolled under scholarships.

Degree Program	Institution	Number Enrolled	Sponsor
<u>Ph.D. IN</u>			
Development Communication	UPLB	1	BSU
Agricultural Education	UPLB	1	BSU
Science Education	De la Salle University	1	BSU
Education	St. Louis University	1	BSU
Animal Science	UPLB	2	BSU (partial)
Botany	UST	1	BSU (Partial)
Soil Science :	UPLB	1	SEARCA
	UPLB	1	Ford Foundation
	University of Idaho	1	Lutheran Church of the Phils.
Soil Microbiology	Kochi Univ.	1	Monbusho, Japan
	Tokyo Uni.	1	-ditto-
Horticulture	UPLB	2	BSU
	Araneta Uni. Foundation	1	Agro-Tech
	Univ. of Hawaii	1	East-West Inst.
Sociology	UP Diliman	1	BSU
Psychology	De la Salle University	1	DLSU in Asst. Program
Agric'l Economics	UPLB	1	PCARRD
Plant Pathology	UPLB	2	SEARCA
Entomology	UPLB	1	PCARRD
Chemistry	Texas A & M University	1	Graduate Assistance
Ed.D.	BSU	1	BSU (Partial)

Table 8. Continuation.

Degree Program	Institution	Number Enrolled	Sponsor
<u>MS IN</u>			
Agric'l Business Mgmt.	UPLB	1	Ford Foundation
Food Science	UPLB	1	BSU
Plant Breeding	CLSU	1	BSU
Agric'l Engineering	CLSU	1	Ford Foundation
Management	UPCB	1	BSU
Sociology	UPCB	1	Ford Foundation
Microbiology	UPLB	1	-ditto-
Biology	UST	1	NSTA-SPI
Forestry	UPLB	1	Ford Foundation
Timber' Mechanics	Auburn Univ.	1	Graduate Assist.
<u>MA IN</u>			
Educational Management	UB	1	BSU
Physics	UP Diliman	1	NSTA-SPI
Chemistry	UP Diliman	1	NSTA-SPI
Demography	UP	1	UP Endowment Fund
Education	UP Diliman	1	BSU (Partial)
Music Education	DMMSU	1	MECS Region I- DMMSU GS Program
<u>MASTERS IN</u>			
Public Administration	UPCB	1	BSU
Rural Development	Asian Institute of Technology	1	AIT, Bangkok
<u>MASTERS OF</u>			
Agric'l Science Animal Production	University of Melbourne	1	Colombo Plan
National Security	National Defense College	1	-
<u>BS IN</u>			
Commerce	UB	1	BSU

Table 8. Continuation.

Degree Program	Institution	Number Enrolled	Sponsor
<u>MS IN</u>			
Agric'l Business Mgmt.	UPLB	1	Ford Foundation
Food Science	UPLB	1	BSU
Plant Breeding	CLSU	1	BSU
Agric'l Engineering	CLSU	1	Ford Foundation
Management	UPCB	1	BSU
Sociology	UPCB	1	Ford Foundation
Microbiology	UPLB	1	-ditto-
Biology	UST	1	NSTA-SPI
Forestry	UPLB	1	Ford Foundation
Timber Mechanics	Auburn Univ.	1	Graduate Assist.
<u>MA IN</u>			
Educational Management	UB	1	BSU
Physics	UP Diliman	1	NSTA-SPI
Chemistry	UP Diliman	1	NSTA-SPI
Demography	UP	1	UP Endowment Fund
Education	UP Diliman	1	BSU (Partial)
Music Education	DMMSU	1	MECS Region I-DMMSU GS Program
<u>MASTERS IN</u>			
Public Administration	UPCB	1	BSU
Rural Development	Asian Institute of Technology	1	AIT, Bangkok
<u>MASTERS OF</u>			
Agric'l Science Animal Production	University of Melbourne	1	Colombo Plan
National Security	National Defense College	1	-
<u>BS IN</u>			
Commerce	UB	1	BSU

Table 9. Extension and training services offered by the University.

Programs/Projects	Number of Persons Assisted
<b>1. Skills Training Project</b>	
Handicraft	86
Food Processing	189
Agro-Forestry	33
Organic Farming	41
Bamboo Production	46
Vegetable Production	102
Root Crops	92
Poultry and Swine	36
<b>2. Outreach Projects (Field)</b>	
Organic Farming	97
Highland Farming Systems	123
Bamboo Production	71
Plant Clinic Services	
Animal Clinic Services	
Soil Analysis Services	
<b>3. Publications</b>	
Extension Newsletter (Old)	3
Research and Extension Newsletter	1
<b>4. Institutional Linkages (Tie-Up Projects)</b>	
BSU-Ford Foundation tie-up for participatory development in Benguet and Mt. Province	
BSU-RTC RD-ICAP skills training projects implemented in Tadian, Bontoc, Besao and Sagada, Mt. Province; Pinukpuk, Kalinga-Apayao; and Kiangan, Ifugao	
BSU-RTC RD-OMACC skills training projects implemented in La Trinidad, Bulanao, Kalinga-Apayao	
BSU-MAF-PDS-LGU skills training projects implemented in Tuba, Tublay, Sablan and La Trinidad, Benguet; Kiangan, Ifugao; Pinukpuk, Kalinga-Apayao	
BSU-RTC RD-Canadian Government development projects on Handicrafts (La Trinidad Handicraft Association). This is a self-employment project organized for women who now resides in La Trinidad community.	
BSU-RTC RD-CARE Philippines Development projects implemented in Besao, Sagada and Bauko, Mt. Province. Establishment of IGP Projects.	

Table 10. Faculty and staff profile.

Positions/Items	Total	Male	Female	Perma- nent	Tempo- rary
A. Itemized Faculty	267	110	157	267	-
Non-Teaching	240	124	116	226	14
B. Non-Itemized Substituto Instructors	14	7	7		
Casual Employees	75	33	42		
Student Assistants	25	17	18		

Table 11. Faculty Profile.

Academic Rank/ Sub-Rank	Total	Educational Attainment		
		Ph.D./ Ed.D.	MA/MS	DVM BS/AB
Professor	VI	11	11	
	V	-	-	
	IV	1	1	
	III	1	1	
	II	1	1	
	I	2		2
Associate Professor	VI	4	2	2
	V	3	1	1
	IV	7	2	5
	III	6	1	4
	II	10	2	7
	I	7	2	5
	-	1		1

Table 11. Continuation.

Academic Rank/Sub-Rank		Total	Educational Attainment			
			Ph. D./ Ed.D.	MA/MS	DVM	BS/AB
Assistant Professor	VI	3		3		
	V	7		5		2
	IV	14	1	8	2	3
	III	11		3		8
	II	13	1	9		3
	I	26		15		11
	-	4		3		1
Instructor	VI	11		1		10
	V	15		4	1	10
	IV	14				14
	III	19		3	1	15
	II	12		1		11
	I	52		3		49
(Not Evaluated)	-	2		1		1
		8				8
GRAND TOTAL		265	26	86	5	148

Table 12. Crops and area planted by the Business Affairs Division.

Crops	Area Planted	Value
1. Strawberry	8,478 sq m	₱ 14,018.00
2. Cabbage	2,438 " "	23,985.00
3. Lettuce	5,861 " "	23,312.00
4. Carrots	3,855 " "	16,052.00
5. Sweet Peas	4,889 " "	2,450.00
TOTAL	25,511 sq m	₱ 79,817.00
	2,500 logs	₱375,000.00
GRAND TOTAL		₱454,817.00

Table 14. Appropriations/Fiscal support for 1986.

## Current Operating Expenditures

1.0 Formal Instruction and other services. For formal instruction and other services, including advanced education, higher education, secondary education, elementary education, research, extension services, auxiliary services and general administration and support services, ₱16,613,000.00 of which were from regular appropriations and ₱1,600,000.00 from the University's Special Account in the

General Fund . . . . .	₱ 18,213,000.00
1.1 Advanced Education . . . . .	1,143,000.00
1.2 Higher Education . . . . .	5,100,000.00
1.3 Secondary Education . . . . .	1,922,000.00
1.4 Elementary Education . . . . .	1,009,000.00
1.5 Research . . . . .	3,552,000.00
1.6 Extension Services . . . . .	671,000.00
1.7 Auxiliary Services . . . . .	1,318,000.00
1.8 General Administration and Support Services . . . . .	3,498,000.00
<b>TOTAL CURRENT OPERATING EXPENSES . . . . .</b>	<b>₱ 18,213,000.00</b>

## Capital Outlays

2.0 Capital Outlays. For capital outlays including land and land improvements, construction of permanent improvements and acquisition of equipment . . . . . ₱ 4,100,000.00

2.1 Land and Land Improvement . . . . .	1,000,000.00
2.2 Construction of Permanent Improvements . . . . .	2,100,000.00
2.3 Acquisition of equipment . . . . .	1,000,000.00
<b>TOTAL CAPITAL OUTLAYS</b>	<b>₱ 4,100,000.00</b>
<b>TOTAL APPROPRIATIONS, BENGUET STATE UNIVERSITY . . . . .</b>	<b>₱ 22,313,000.00</b>

## BSU ADMINISTRATIVE OFFICIALS

## OFFICE OF THE UNIVERSITY PRESIDENT

Dr. LUCIO B. VICTOR  
President

Dr. CARLOS T. BUASEN  
Special Assistant to the  
President for Internal  
Control & Special Studies

Prof. OLGA C. DANGWA  
Special Assistant to the  
President for External Affairs

Dr. EMMA B. KEITH  
Director, Special Cultural  
Office; Chief, Management  
Information Office

Dr. ABRAHAM C. PATACSIL  
Director, Planning Office

Atty. FRANCIS A. BULIYAT  
Director, Legal Office

Dr. JOSE P. ALCISO  
Director, Security Office

Mr. THEODORE E. ARCISO  
Chief, Public Relations &  
Visitors Office

Dr. URSULA C. PEREZ  
Chief, Alumni Office

Miss MABEL E. BASCO  
Chief, Internal Control Unit

Mr. ROMULO Q. APOLONIO  
University and Board of Regents  
Secretary

Dr. ESTEBAN B. AKIEW  
Director, Production & Agri-business  
Projects

Prof. ALBERT B. DIMAS  
Assit. Director, Production &  
Agri-business

Mr. VICTOR P. SINGA  
Assist. Director, Resources Development  
and Marketing Center

Prof. BENJAMIN B. DIMAS  
Director, Agro-Forestry Special  
Project

Prof. SYDNEY E. MORESTO  
Chief, Livestock Production

Mr. SALBINO BANGCADO  
Chief, Agri-Crops Production

Dr. ROSA C. ABASTILLA  
Manager, Food Processing Center  
Manager, Cafeteria & Guestel

Dr. WILLIAM D. DAR  
Research Coordinator, HARC

Dr. CIPRIANO C. CONSOLACION  
Director, RTC-RD



OFFICE OF THE VICE PRESIDENT  
FOR ACADEMIC AFFAIRS  
(VP-AA)

Dr. URSULA C. PEREZ  
Vice President for Academic Affairs

Dr. EVELYN M. BAYANGAN Director, Admissions Office	<u>COLLEGE OF AGRICULTURE</u> Dr. LUCIANA M. VILLANUEVA Dean
Dr. MARCELINO T. DELSON Director, Resident Instruction	Chairman, Dept. of Crop Protection
Prof. FRANCISCO R. AQUINO Director, Physical Educ. & Athletic Affairs	Dr. DOMINGO Q. CASIWAN Associate Dean
Prof. REVELINA Z. FABRO Asst. Director, Physical Educ. & Athletic Affairs	Chairmen: Prof. SYDNEY E. MORESTO Dept. of Animal Science
Dr. CAROLINE B. DIMAS Director, Student Affairs	Prof. PEPE E. TOLEDO Dept. of Plant Science
Dr. CARLOTA V. LUBRICA Asst. Director, Student Affairs	Prof. TESSIE M. MERESTELA (on Scholarship) Mrs. LERMA K. MAMARIL (Acting) Dept. of Soil Science
Dr. ROSITA A. GENABE Chief, Guidance & Counseling Office	Dr. HERMINIA A. FRANCISCO Dept. of Agric'l. Economics and Agribusiness Management
Dr. SALVADORA C. SERRANO Chief, Placement Office	Prof. LUZ C. DEBAD Dept. of Agric'l. Education
Mr. THEODORE E. ARCISO Chief, Financial Aid Office	<u>COLLEGE OF APPLIED ENGINEERING AND TECHNOLOGY</u>
Miss VICTORIA D. TUMBAGA Manager, Residence Hall (Women)	Engr. ADRIANO AROMIN (On Scholarship) Engr. MILAGROS M. BIBAL Acting Dean
Mr. ERNESTO P. LASDACAN Manager, Residence Hall (Men)	Chairmen:
<u>GRADUATE SCHOOL</u> Dr. METHODIA B. MERCADO Dean	Prof. ARTHUR L. PARAN Dept. of Agri-Mechanics
	Mrs. EMMA RUTH V. BAYOGAN Dept. of Post Harvest Technology

COLLEGE OF VETERINARY MEDICINE

Dr. ABRAHAM C. PATACSIL  
Acting Dean

Dr. BASITO S. COTIW-AN  
Associate Dean

COLLEGE OF FORESTRY

For. FRANCISCO N. BIBAL  
Acting Dean

## Chairmen:

Prof. FELICIANO G. CALORA, JR.  
Dept. of Forest Biological Services  
& Wood Science Tech.

Prof. INOCENTES V. MOLDEZ  
Dept. of Forest Resources Mgt.  
and Social Forestry

Forester PAQUITO UNTALAN  
Dept. of Agro-Forestry

COLLEGE OF ARTS AND SCIENCES

Dr. ESTHER R. HUFANA  
Dean

Dr. LUZVIMINDA A. VILLAMATER  
Associate Dean

## Chairmen:

Prof. LORENZA G. LIRIO  
Dept. of Biology

Prof. DANILO L. LICUDINE  
Dept. of Chemistry

Prof. BONIFACIO A. MINONG  
Dept. of Humanities

Prof. MARCOS A. BULIYAT  
Dept. of Math-Physics-Statistics

Mrs. EVELYN B. SINGA  
Dept. of Social Sciences

COLLEGE OF TEACHER EDUCATION

Dr. JOSE P. ALCISO  
Dean

Dr. FERMIN G. GALBON  
Associate Dean

Dr. MARVIN O. ATOS  
Supervisor, Student Teaching (BSAE)  
Principal, Elem. Training Dept.

Prof. JOSEFINA R. ALONZO  
Supervisor, Student Teaching (BSHT)

## Chairmen:

Prof. LORY C. BALAOING  
Dept. of Home Economics

Prof. ANGEL C. CAWAT  
Dept. of Agric'l. Education

Prof. ALFREDO C. TIPAYNO  
Principal, Dept. of Secondary  
Education

## Coordinators:

Prof. GREGORIO BILANGO  
Vocational Agriculture

Prof. MARY C. PORTE  
Home Economics

Prof. EVELYN B. DIMAS (On Scholar-  
ship)

Prof. CARLOS P. LUMA-ANG (Acting)  
Science

Dr. JULIET P. BAGANO  
General Secondary

OFFICE OF THE VICE PRESIDENT FOR  
RESEARCH AND DEVELOPMENT  
(VP-R & D)

Dr. WILLIAM D. DAR  
Vice President for Research and Development

Dr. PERCIVAL B. ALIPIIT  
Director, Research & Technology  
Refinement

Dr. NORA J. CLARAVALL  
Director, University Library  
Services

Dr. CIPRIANO C. CONSOLACION  
Director, Extension & Training

Prof. BIENVENIDO M. BALWEG  
Director, Publications and  
Media Services

Northern Philippines Rootcrops  
Research and Training Center

Horticulture Research &  
Training Institute

Prof. ELINO O. SANO  
Director

Dr. PERCIVAL B. ALIPIIT  
Director

Prof. EDWIN T. BALAKI  
Assistant Director  
Chief, Extension & Training

Dr. ESTEBAN B. AKIEW  
Assistant Director  
Coordinator, Extension &  
Training Department

Chiefs:

Coordinators:

Mrs. ZENAIDA C. GANGA  
Crop Improvement

Prof. PEPE E. TOLEDO  
Vegetable Crops Department

Miss JULIE L. TUKAKI (on scholar-  
ship)

Mrs. GUERZON A. TIANZA (acting)  
Crop Management

Prof. ALFREDO C. TIPAYNO  
Fruits & Plantation Crops  
Department

Miss JOCELYN C. PEREZ  
Crop Protection

Prof. BEN D. LADILAD (on  
Scholarship)

Mrs. EMMA RUTH V. BAYOGAN  
Post-Harvest Technology

Prof. ARACELI G. LADILAD  
(acting)

Ornamental Crops Department

Miss BETTY T. GAYAO  
Socio-Economics

Prof. LEONCIA L. TANDANG  
Manager, Highland Crops  
Research Station  
(BSU-IPB)

OFFICE OF THE VICE PRESIDENT FOR  
ADMINISTRATION  
(VP-AD)

Dr. ABRAHAM C. PATACSIL  
Vice President for Administration

Prof. LAWANA T. BATICAGAN  
Director, Administrative Services

Dr. TERESITA A. PALAEZ  
Chief, Dental Unit

Miss EMILIA M. ESTEBAN  
Chief, Personnel Office

Dr. CARLOS T. BUASEN  
Director, Land Reservation  
Office

Mrs. VICTORIA L. LIMPIN  
Chief, Records Office

Prof. JUAN P. MARTES  
Director, Physical Plant &  
General Services

Mr. ERNESTO M. LUMIQUED  
Chief, Supply & Property Office

Arch. HORTENCIO E. PATACSIL, JR.  
Chief, Plans, Designs &  
Construction Office

Mrs. ESTRELLA A. RAMOS  
Director, Finance Division

Engr. DANILO J. BAUTISTA  
Chief, Motor Pool

Mr. OSCAR B. LIMPIN  
Chief, Accounting Office

Mrs. JOSETINA M. MARQUEZ  
Chief, Budget Office

Mr. MAXIMO B. CAPINDING  
Chief, Repairs, Maintenance  
Housing & Janitorial  
Services

Mr. DOMINGO E. GARIH  
Chief, Cashiering Office

Prof. ARTHUR L. PARAN  
Chief, Campus Grounds, Roads,  
Landscaping, Irrigation  
and Drainage Section

Dr. WILLA L. FORMARAN  
Director, Health Services

Committee On The Integration  
of BSU Annual Report  
FY 1986

Chairman	-	Dr. William D. Dar
Secretary	-	Mr. Carlito P. Laurean
Members	-	Dr. Ursula C. Perez
		Dr. Abraham C. Patacsil
		Mr. Romulo Q. Apolonio
Grammar and Style Editor	-	Dr. Esther R. Hufana
Cover Design	-	Mr. Manuelito Z. Tirazona
Typist	-	Ms. Sherilyn A. Costina

ACKNOWLEDGEMENT

Special thanks to the different departments/units/colleges of the University for the extensive information embodied in this Annual Report.

Compiled and Published by  
the Office of the Vice President  
for Research and Development  
BENGUET STATE UNIVERSITY  
La Trinidad, Benguet