

ANNUAL REPORT 1999



Benguet State University
La Trinidad, Benguet
Philippines
www.bsu.edu.ph

The cover

Benguet State University is in the internet. The cover is the University's homepage. It is accessible in the internet address www.bsu.edu.ph. The mural in front of the Administration building was chosen as background depicting the fourfold functions of the University.

Webmaster: Mr. Mario S. Diaz



Republic of the Philippines
BENGUET STATE UNIVERSITY
La Trinidad, 2601 Benguet



Office of the President

15 February 2000

His Excellency
PRES. JOSEPH EJERCITO ESTRADA
President
Republic of the Philippines
Malacañang, Manila

Thru: **HON. ESTER A. GARCIA**
Chairman, Commission on Higher Education
DAP Building, San Miguel Avenue
Ortigas Center, Pasig City

Sir:

I am pleased to submit the 1999 Annual Report of the Benguet State University. The report presents the highlights of the University's humble accomplishments in instruction, research, extension and production.

I take this opportunity to express my gratitude for the support and cooperation that His Excellency has extended in pursuing our tasks as a state university.

I hope for your continued support and cooperation for the programs of the University. My sincerest thanks and God bless you.

Very respectfully yours,

CIPRIANO C. CONSOLACION
President

Contents

COVER LETTER	i
<hr/>	
EXECUTIVE SUMMARY	3
<hr/>	
INSTRUCTION	5
Programs and course offerings	5
Enrolment and graduation trend	7
Board/licensure examination performance	11
University library services	12
Student scholarship	13
Faculty profile	14
AACCU ^P Accreditation Status	16
Awards	17
<hr/>	
RESEARCH AND DEVELOPMENT	18
Completed and on-going projects	18
Technologies generated and publications	20
Role of University in the National Research, Development and Extension Network	21
Awards	21
<hr/>	
EXTENSION AND COMMUNITY SERVICES	22
Extension Programs	22
Award	23
<hr/>	
PRODUCTION	24
Income-generating projects	24
University income	25
<hr/>	
INTERNAL GOVERNANCE	26
Administration	26
Faculty and staff development	27
Initiatives and linkages	27
Infrastructure, equipment and facilities	29
Budget	31
<hr/>	

**T
a
b
l
e
s**

1. Enrolment in the graduate, undergraduate, non-degree, open university and basic education programs, school year 1999-2000	6
2. Graduates of graduate, undergraduate, non-degree, open university and basic education programs in 1999	10
3. Board/licensure examination performance	12
4. Print and non-print materials acquired in 1999	13
5. Library attendance statistics in 1998 and 1999	13
6. Scholarships/grants given to undergraduate and graduate students	14
7. Distribution of faculty by highest educational attainment/degree and according to colleges and institutes	15
8. AACUP accreditation status of the degree programs and graduate education	16
9. University funded researches	19
10. Extension programs	22
11. Income generating projects (Fund 163 and 161)	25
12. Distribution of personnel by employment status	26
13. Institutional linkages forged with local and international organizations	28
14. Infrastructure projects in 1999	29
15. Comparison of the University Budget for 1998 and 1999	31
16. Other sources of budget negotiated during the year	32

**F
i
g
u
r**

1. Enrolment during the first semester school year 1999-2000	7
2. Enrolment trend in the BS programs during the first semester, school year 1999-2000	8
3. Enrolment trend during the first semester school year 1998-1999 and 1999-2000	9
4. Graduates of 1999	9
5. Graduates in the BS programs in 1999	11
6. Graduation trend in 1998 and 1999	11
7. Faculty distribution by academic rank	15
8. Allocation of the 1999 budget	31

**A
p
p
e
n
d
i
c
e
s**

1. Curricular offerings	33
2. Administrative Council	34
3. The Board of Regents in 1999	36
4. Abbreviations and acronyms	39



Dr. Cipriano C. Consolacion, the President of the Benguet State University in 1993-1999. He was re-appointed President of the University by the Board of Regents until 2004

The Benguet State University marked 1999 with a sterling performance, even as it continued being a dynamic educational center of excellence in the Cordillera. This year, Dr. Cipriano C. Consolacion was re-appointed President of the University for a term of four years.

Instruction. A total of 7,230 students enrolled during the first semester school year 1999-2000. The BS in Agriculture had the most number of students during the school year that constitute about 17% of the total enrolment or 25% of the total bachelor's degree program.

Granted a bachelor's degree were 1,349 students with BS in Agriculture having the highest number. Three graduated *magna cum laude* and 15 *cum laude*. The graduates satisfactorily performed in licensure examinations.

Enrolment and graduation trend increased from 1998 to 1999. In addition to the 14 bachelor's degree programs, BS in Information Technology and BS in Development Communication were offered and the revised curricula in BS in Home Economics and BS in Nursing were implemented. Nine bachelor's degree programs have attained Level II AACCUP accreditation status. Out of the 273 faculty members, 78 are PhD/EdD degree holders; 104 MS/MA; and 91 BS.

Research. In agricultural research, the University made significant breakthroughs. Six technologies have been developed on sweet potato, anthurium, strawberry, colored callas and chrysanthemum. They are now ready for dissemination.

The University funded five research programs and 29 projects which were implemented by the four research institutes. So far, one research program and 14 projects were completed. There were 15 researches funded by other government agencies, 13 by private companies and two by international agencies. Apart from these researches, the colleges and institutes conducted faculty and student researches.

The National Research, Development and Extension Network identified the University as the lead and/or cooperating agency/station for vegetable, ornamental, plantation, root crops, rice, biotechnology, livestock and socio-economics.

Extension. Five extension programs were implemented by the University through the Extension Office. The BSU Sa Barangay Program served 1,595 farmers from 40 barangays in 12 municipalities of Benguet, Nueva Viscaya, Ilocos Sur, La Union and Mt. Province. On the other hand, the Agri-school on the Air aired 22 topics and graduated 18 farmers. Produced were 14 Information Education and Communication materials and 16 training programs participated in by 430 trainees were conducted/co-sponsored.

The colleges and institutes, through their respective extension coordinators, provided extension and community outreach services. A notable outreach program implemented is the adopt-a-school or a-barangay program.

Production. The University engaged in various income-generating projects. Its services and food production projects generated a net income of P5,168,949.93. Fund 161 Project increased its income by 123.74%. Notable income was also generated from tuition fees, land and facilities rental. The total income for the Special Trust Fund is P11,904,335.79 with a net increase of P2,778,289.29 over that of 1998.

Internal Governance. The University has 610 personnel, 558 of whom are occupying permanent employment status. Enjoying scholarships/grants, 30 faculty members are working for MS/MA and PhD/EdD degrees in various fields from prestigious universities in the Philippines, Asia, Australia and Europe. Memoranda of agreement and understanding on cooperation in instruction and research pursuits were forged with 26 international and 38 local linkages. The total budget of the University obtained from the national government was P159,089,000.

Awards. The President received the Dioscoro L. Umali Medal for Outstanding Science Administrator Award from the DOST. HARRDEC received the Ugnay Award and the BSU Sa Barangay Extension Program was the regional winner of the first nationwide "Best Project Undertaken Through Volunteerism". The University is ranked third as School of Veterinary Medicine among other universities in the Philippines offering Doctor of Veterinary Medicine. Numerous and notable awards were also received by researchers, students and faculty.

The graduates during the 74th Commencement Exercises



Programs and Course Offerings

The Graduate School of the University offered six doctoral courses and 30 master's degree courses in agriculture, forestry, education, arts, sciences and other related fields (Appendix 1). Classes were held during Saturdays, Sundays and after 5 o'clock in the afternoon during weekdays.

In addition to the 14 bachelor's degree programs, BS in Development Communication and BS in Information Technology were offered effective first Semester 1999-2000 (Table 1). These new degree programs were implemented by the College of Agriculture and College of Arts and Sciences, respectively. The revised curriculum of the BS in Nutrition and Dietetics and of BS in Nursing were also implemented by the College of Home Economics and Technology and College of Nursing, respectively.

The Open University Program, now on its third year of operation, offered six master's degrees and one diploma course through the Distance Education Program. These courses use modular approach, reinforced by monthly interaction and tutorial sessions conducted by the instructors.

The elementary and secondary levels of education under the direction of the College of Teacher Education served as the teaching laboratory for the practice teaching program of students of BS in Elementary Education, BS in Secondary Education, BS in Agricultural Education and BS in Home Economics.

Table 1. Enrolment in the graduate, undergraduate, non-degree, open university and basic education programs, school year 1999-2000

PROGRAM/COURSE	Summer	1st Sem	2nd Sem
Graduate Program			
PhD/EdD	47	115	117
MS/MA/MPA	314	462	477
Sub-total	361	577	594
Undergraduate Degree Program			
BS Agriculture	212	1215	1099
BS Agribusiness	39	107	149
BS Agricultural Education	48	272	259
BS Agricultural Engineering	37	169	163
BS Animal Technology	11	48	46
BS Applied Statistics	1	85	70
BS Development Communication*	-	27	39
BS Environmental Science	95	302	278
BS Forestry	103	291	267
BS Information Technology*	-	41	41
BS Home Economics	156	401	377
BS Nursing**	-	135	126
BS Nutrition and Dietetics**	15	168	154
B Elementary Education	46	647	675
B Secondary Education	60	647	669
Doctor of Veterinary Medicine	77	226	265
Sub-total	900	4,781	4,677
Non-degree Program			
Diploma in Physical Education	62	31	35
Diploma in Agroforestry	23	82	68
Forest Ranger Certificate Course	28	91	85
Home Management Arts	0	51	38
Auto Mechanics	0	34	36
Cross Enrollees	0	10	10
Sub-total	113	299	272
Open University			
Master's Degree		139	107
Short term Courses		201	0
Sub-total		440	107
Basic Education			
Elementary Education	-	685	-
Secondary Education	-	548	-
Sub-total	0	1233	
Total	1374	7230	5650

*New degree program; **Revised degree program

Enrollment and Graduation Trends

A total of 7,230 students in all levels enrolled in the University during the first semester school year 1999-2000. Table 1, and Figure 1, show the distribution of the enrollees in the different levels.

Enrolment during the second semester decreased because some of the students had graduated, shifted courses or had probably dropped out. Enrolment for elementary and secondary levels is only done during the first semester.

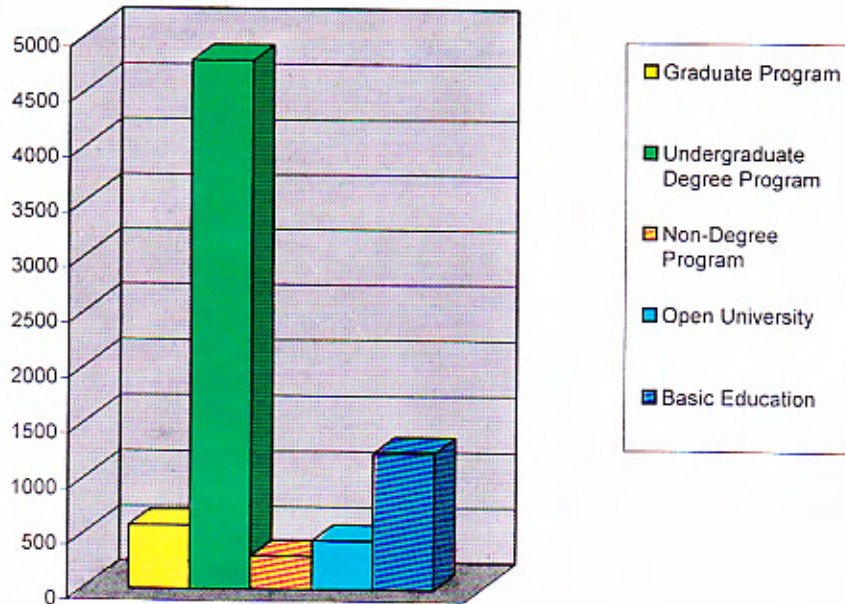


Figure 1. Enrollment during the first semester, school year 1999-2000

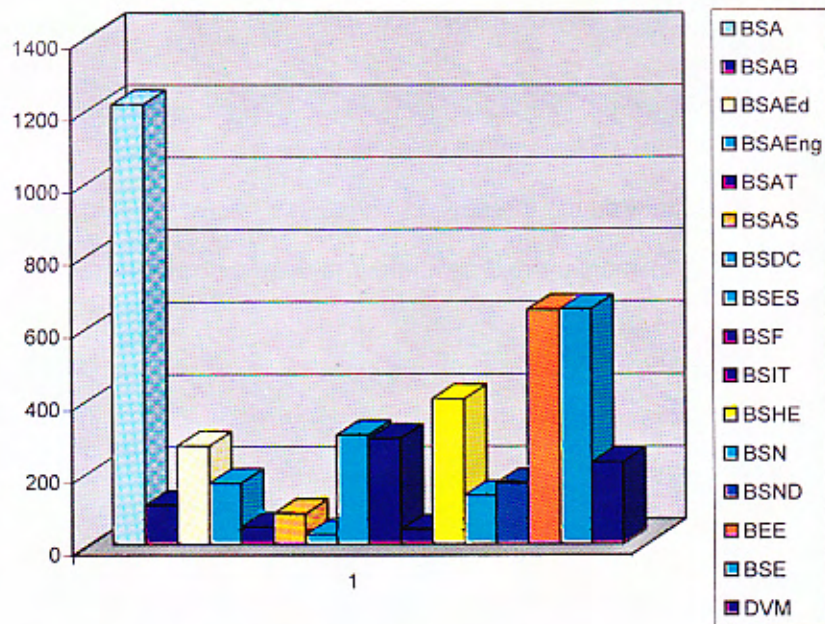


Figure 2. Enrollment in the BS programs during the first semester school year 1999—2000

Among the undergraduate degree programs, the BS in Agriculture had the most number of student-enrollees for the year (Figure 2). Figure 3 shows the enrolment trend during the first semester school years 1998-1999 and 1999-2000. Except in the case of the Open University Programs, the enrolment decreased.

In 1999, the University graduated 1,349 students, 57 of whom were from the graduate programs; 887, undergraduate degree programs; 156, non-degree programs; 188, short term courses; and 239 basic education levels (Table 2 and Figure 4). The BS in Agriculture had a total of 205 graduates, the highest number of enrolled students (Figure 5). Among the graduates, three were *magna cum laude* and 15 were *cum laude*. The graduation trend in 1998 and 1999 is shown in Figure 6.

The University conferred an honorary degree of *Doctor of Humanities* to His Excellency, Ilan Baruch, Ambassador of Israel to the Philippines.

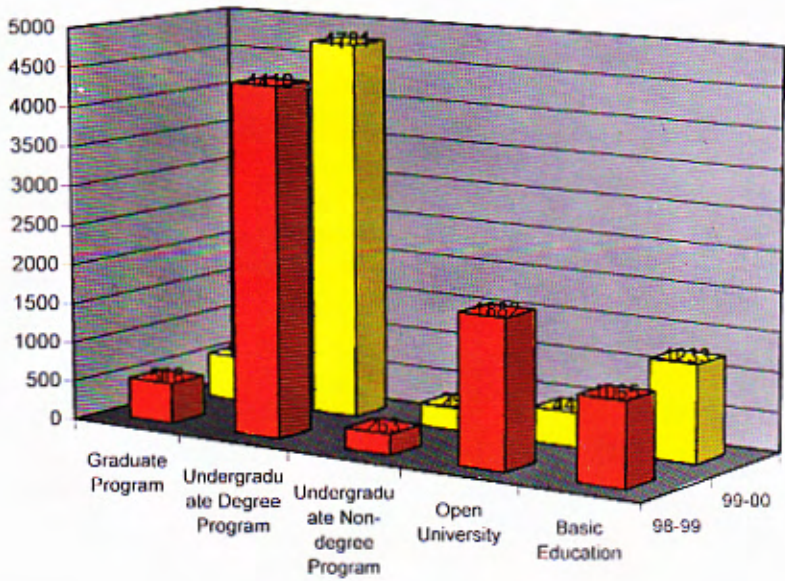


Figure 3. Enrollment trend during the first semester school years 1998—1999 and 1999—2000

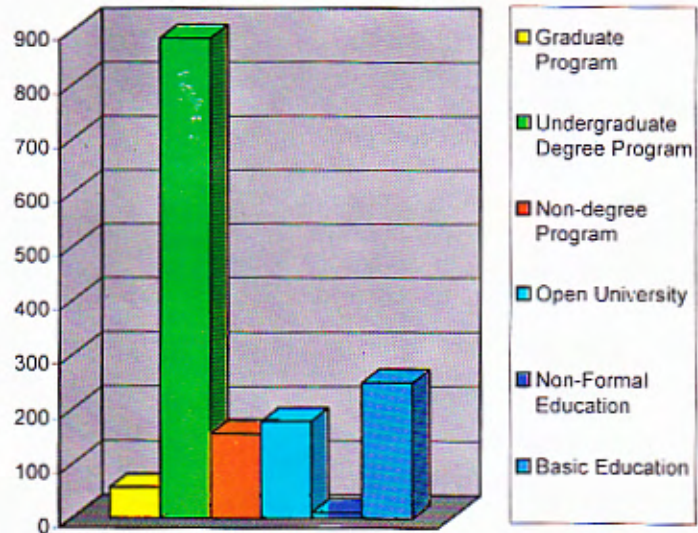


Figure 4. Graduates of 1999



His Excellency, Hon. Ilan Baruch is conferred Doctor of Humanities, honoris causa during the Open University Graduation in 1999

Table 2. Graduates of graduate, undergraduate, non-degree, open university and basic education programs in 1999

PROGRAM/COURSE	March 1999	Summer 1999	October 1999	Total
Graduate Program				
PhD/EdD	9	0	2	11
MS/MA/MPA	21	8	17	46
Sub-total	30	8	19	57
Undergraduate Degree Program				
BS Agriculture*	161	20	24	205
BS Agribusiness	33	0	4	37
BS Agricultural Education*	58	1	7	66
BS Agricultural Engineering*	30	0	3	33
BS Animal Technology	40	0	0	40
BS Applied Statistics	0	0	2	2
BS Development Communication ²	-	-	-	-
BS Environmental Science*	19	2	1	22
BS Forestry	68	2	12	82
BS Information Technology ²	-	-	-	-
BS Home Economics	24	0	5	29
BS Nursing	32	0	0	32
BS Nutrition and Dietetics	39	1	3	43
B Elementary Education*	131	2	6	139
B Secondary Education*	130	3	9	142
Doctor of Veterinary Medicine	14	1	0	15
Sub-total	779	32	76	887
Non-degree Program				
Certificate in Physical Education	1			1
Diploma in Physical Education	7	11	0	18
Diploma in Agroforestry	19	1	0	20
Forest Ranger Certificate Course	11	1	0	12
Home Management Arts	39	1	0	40
Auto Mechanics	36	0	29	65
Sub-total	113	14	29	156
Open University³				
Short Term Courses	-	-	-	178
Sub-total	-			
Non-Formal Education				
	-	-	10	10
Basic Education				
Elementary Education	141	-	-	141
Secondary Education	98	-	-	98
Sub-total	239		10	249
Total	1161	54	134	1349

¹BS/B Degree Programs marked with asterisk (*) have honor graduates: BS Agriculture—1 *cum laude*; BS Agricultural Education—1 *cum laude*; BS Environmental Science—1 *magna cum laude*; B Elementary Education—2 *magna cum laude* and 6 *cum laude*; and B Secondary Education—5 *cum laude*.

²New Curricular Offering

³Closing exercises was in December 1999

Figure 5. Graduates of the BS programs in 1999

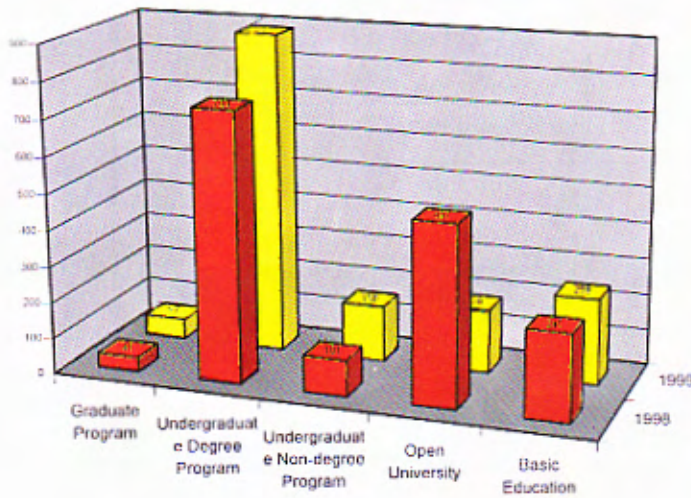
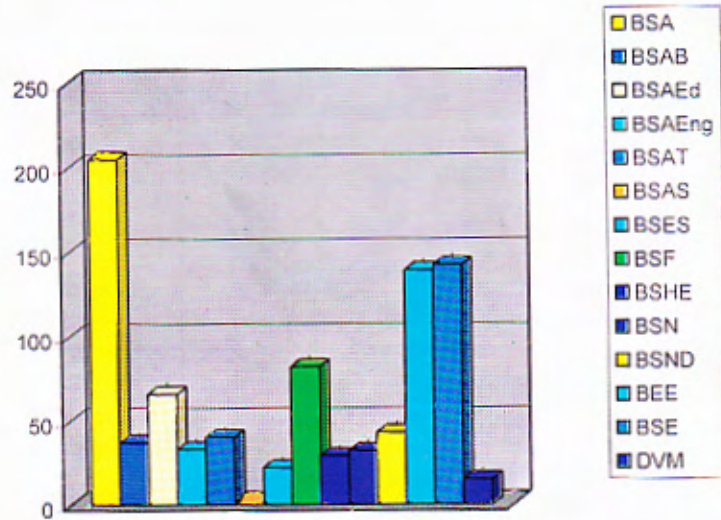


Figure 6. Graduation trend in 1998 and 1999

Board/Licensure Examination Performance

The performance of the graduates in the board/licensure examination that was given by the Philippine Regulatory Commission is presented in Table 3. The BS in Home Economics graduates of the College of Home Economics & Technology did well in the Licensure Examinations for Teachers (100% passing rate). The Bachelor of Elementary Education ranked 18 while the Bachelor of Secondary Education ranked 17 in the national rating. The BS Nursing maintained a high passing rate over that of the national passing rate.

Table 3. Board/licensure examination performance

College	Licensure	Passing rate	
		BSU	National
College of Engineering and Applied Technology	Agricultural Engineer	66	57
College of Home Economics and Technology	Dietician and Nutritionist	46.67	52
	BSHE-LET		
	Elementary	100	no record
College of Forestry	Secondary	37.5	68.75
	Forester	28.0	43.79
College of Nursing*	Nurse	67.85	51.36
		91.66	no record
College of Teacher Education	BEE-LET	81.41	60
	BSE-LET	65.56	52
	BSAE-LET	56.52	-
College of Veterinary Medicine	Veterinarian	30.43	50

* Board licensure examinations were given two times a year.



Dr. Ruben B. Villareal, Chancellor of UPLB, donating books to the University

University Library Services

The University Library acquired physical resources that include print, non-print materials, hardware and software. In 1999, books, journals, theses and non-print materials acquired through purchase, donation and exchange enriched the collection (Table 4). Through the VLIR-BSU-SLU project, the University Library acquired computers and accessories. The acquisition of Aralin Software using CDSISIS windows-based enabled the library to start its On-Line-Access (OPAC) aimed at encoding all the library records. With these acquisitions, the number of library users increased tremendously from 1998 to 1999 (Table 5).

Table 4. Print and non-print materials acquired in 1999

<i>Materials</i>	<i>Collection as of 1998</i>	<i>Acquired in 1999</i>
Books	31,021	505
Journal & pamphlets	1,992	138
Theses	7,257	655
CDROMS	24	57
Video Cassette Tapes	115	6

Table 5. Library attendance statistics in 1998 and 1999

<i>Type of users</i>	<i>As of 1998</i>	<i>As of 1999</i>
Students	3,788	103,000
Faculty and staff	951	27,000
Outside researchers	372	38,000
Total	5,111	168,000



The BSU Glee Club members are enjoying institutional scholarship

Student Scholarship

In 1999, 1,097 undergraduate and graduate students were granted scholarships (Table 6), made possible through institutional linkages and initiatives of colleges/units, scholarships from government, private entities and foreign funding. Most of the grantees had University scholarships. Four MS students are enjoying the United States Assistance for International Development Scholarship Program.

Table 6. Scholarships/grants given to undergraduate and graduate students

SCHOLARSHIP/GRANT	<i>Under graduate</i>	<i>Graduate</i>	<i>TOTAL</i>
Government Sponsored	427	18	445
Private Sponsored	50	0	50
Institutional (BSU)	534	64	598
International (USAID)	0	4	4
Total	1011	86	1097

Faculty Profile

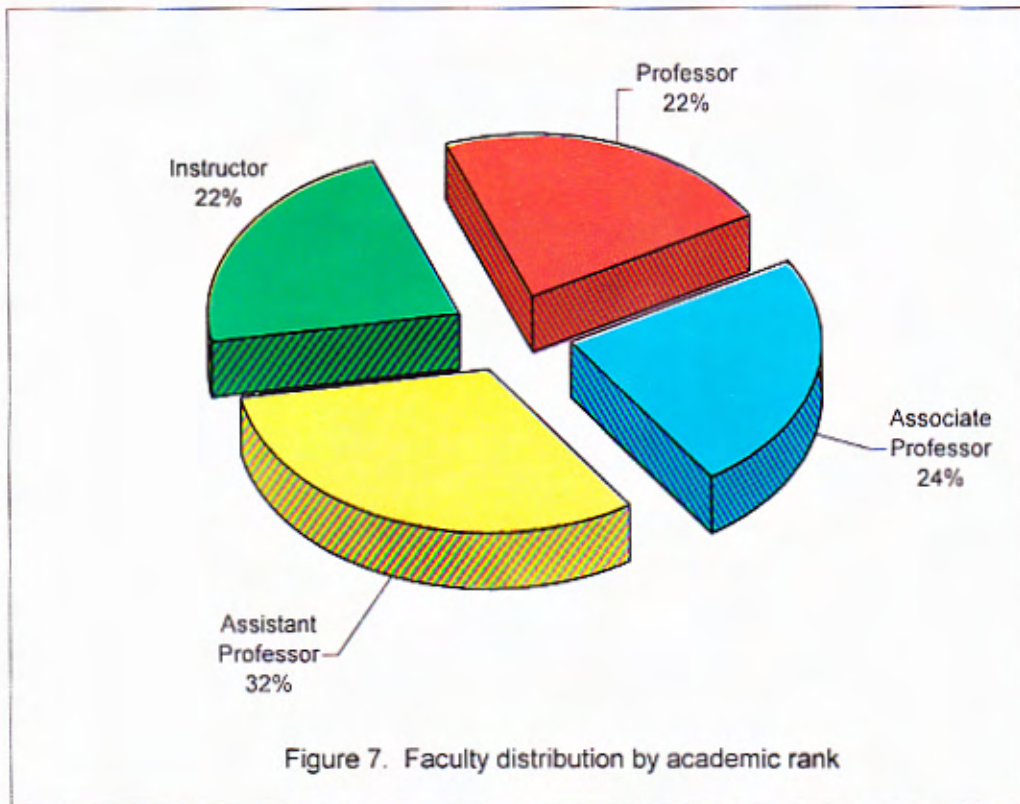
Ensuring quality education of students are 273 faculty members from eight colleges and two academic institutes (Table 7). The College of Agriculture had the most number of faculty members, 74 or about 27% of the teaching force. Since having the most number of enrollees, the College of Teacher Education has also more faculty members than other colleges and institutes. The College of Arts and Sciences had also the most number of faculty members because they teach the basic subjects of all the degree programs of the different colleges and institutes; hence, just like the College of Agriculture and College of Teacher Education, more faculty members were necessary. In other colleges and institutes the number of faculty members was proportionate to that of the students.

To supplement instruction capability, 27 research staff with equivalent faculty rank were tapped to give instruction in agriculture and related subjects.

Based on the distribution of faculty members according to educational attainment, Table 7 and Figure 7, 104 (38%) had master's degree; 91 (33%), bachelor's degree; and 78 (28%), doctorate degree. The College of Agriculture had the most number of faculty members with PhD degree.

Table 7. Distribution of faculty by highest educational attainment/degree and according to colleges and institutes

COLLEGES/INSTITUTES	BS	MS/ MA	PhD EdD	Total	%age
College of Agriculture	17	24	33	74	27.11
College of Arts and Sciences	18	25	21	65	23.81
College of Engineering and Applied Technology	6	4	1	11	4.03
College of Forestry	6	6	1	13	4.76
College of Home Economics and Technology	6	5	2	13	4.76
College of Nursing	1	6	2	9	3.30
College of Teacher Education	25	28	16	69	25.27
College of Veterinary Medicine	10	2	1	13	4.76
Institute of Public Administration		1		1	0.36
Institute of Physical education and Sports	2	3	1	6	2.20
Total	91	104	78	273	100
%age	33.33	38.09	28.57	100	



AACCUP Accreditation Status

In 1999, the First Resurvey Visit of the degree programs of College of Agriculture, College of Nursing, College of Veterinary Medicine and College of Teacher Education was conducted by the Accrediting Agency of Chartered Colleges and Universities of the Philippines (AACCUP). The degree programs of College of Engineering and Applied Technology, College of Forestry and College of Home Economics and Technology were also evaluated for Level II. The AACCUP accreditation status of the degree programs as of December 1999 is shown in Table 8.

Nine bachelor's degree programs have attained the Level II AACCUP accreditation status. The BS in Applied Statistics of the College of Arts and Sciences was recommended for second Resurvey Visit (level III).

Table 8. AACCUP accreditation status of the degree programs and graduate education

<i>College</i>	<i>Degree Program</i>	<i>Status</i>	<i>Remarks</i>
College of Agriculture	BS Agriculture BS Agribusiness Management	Level II	Recommended for first Resurvey Visit
College of Arts and Sciences	BS Applied Statistics	Level II	Recommended for second Resurvey Visit (Level III)
College of Engineering and Applied Technology	BS Agricultural Engineering	Level I	Recommended for Level II
College of Home Economics and Technology	BS Home Economics BS Nutrition and Dietetics	Level I	Recommended for Level II
College of Veterinary Medicine	Doctor of Veterinary Medicine BS Animal Technology	Level II	Recommended for first Resurvey Visit
College of Nursing	BS Nursing	Level II	Recommended for first Resurvey Visit
College of Teacher Education	BS Agricultural Education B Elementary Education B Secondary Education	Level II	Recommended for first Resurvey Visit
College of Forestry	BS Forestry	Level I	Deferred
Graduate School	MS and PhD (Agriculture)	Level I	Recommended for Level II



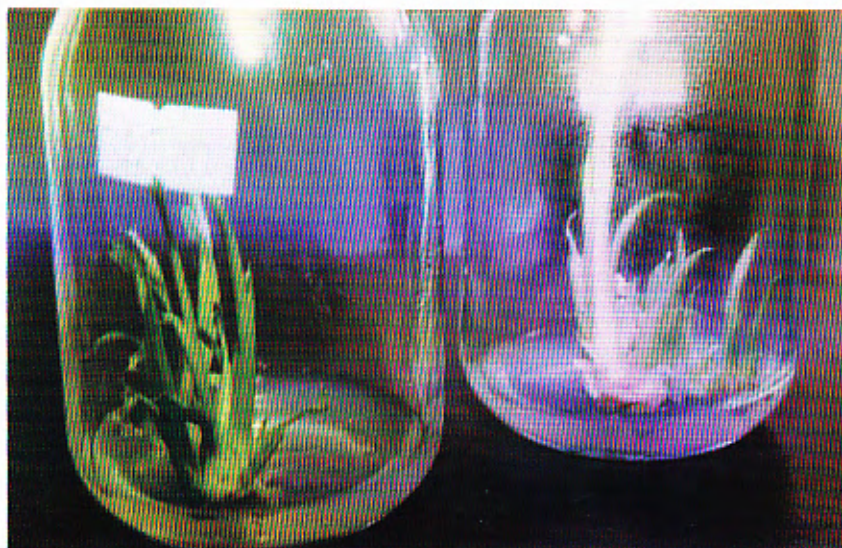
Dr. Felipe B. Cachola, the team leader of the AACCU Accrediting Team, during the survey visit

Awards

For meeting all the requirements and strict evaluation by the Commission on Higher Education-Technical Panel for Agricultural Education (CHED-TPAE), the University was given a rating of 85.76%, making it third among the 17 private and public universities offering veterinary medicine courses nationwide. Notable awards have been received by students in local and national competitions.



Medals received by the students in local and national competitions



In-vitro propagation of colored callas

Completed and On-going Projects

Five research programs and 29 projects that are funded by the University were implemented through the Northern Philippine Root Crops Research and Training Center (NPRCRTC), Institute of Highland Farming System and Agroforestry (IHFS), Horticulture Research and Training Institute (HORTI) and Institute of Highland and Policy Studies and Socio-Economic Research and Development (IHPSSERD). Of these researches, 14 were completed (Table 9). Also implemented were 15 projects funded by other government agencies; 13 by private companies; and two by international agencies.



Colored callas



Different varieties of Chrysanthemum

Table 9. University funded researches

COMPLETED RESEARCHES	Implementing Unit	ON-GOING RESEARCHES	Implementing Unit
Integrated Potato Research and Development Program	NPRCRTC	Sweetpotato Research and Development Program	NPRCRTC
Integration of Livestock Production in Agroforestry Systems	IHFSA	Taro and other Aroids R&D Program	NPRCRTC
Azolla Technology Piloting and Promotion in CAR	IHFSA	Yam and other minor Root Crops R&D Program	NPRCRTC
Inventory and Cataloguing of Fishery Resources of Amburayan River, Upper Reach and Bued River	IHFSA	Ten Year Arabica Coffee Rehabilitation and Development Project in Benguet Province	IHFSA
Integrated Highland Farming System	IHFSA	Isolation and Antibiotic Sensitivity Testing of Pathogenic Streptococci of Swine	IHFSA
Vegetable Seed Production Technology Development	HORTI	Establishment of Micro-Hydro Power Projects in Selected Unenergized Areas in the Cordillera	IHFSA
Development of Market Oriented Cropping Schemes	HORTI	Biophysical Characterization of BSU Reserves/Watershed	IHFSA
Carrot Integrated Research and Development Program	HORTI	Chayote Production, Processing and Marketing Development Project	IHFSA
Cultural Management and Crop Protection Studies in Strawberry	HORTI	Integrated Pest Management (IPM) of Selected Vegetable Crops	HORTI
Garden Pea Integrated Research and Development Program	HORTI	Tissue Culture Research and Development for Highland Crops	HORTI
Crop Protection Studies on Selected Fruits and Plantation Crops	HORTI	Development and Piloting of Improved Varieties of Garden Pea	HORTI
Determination of Farmer's Responsiveness and Unresponsiveness to Introduced Technologies	IHPSSERD	Strawberry Varietal Development Program	HORTI
Market Research and Development for IPM	IHPSSERD	Biological Control of Phytophagous Mites Infesting Selected Crops in the Cordillera	HORTI
Project on Production and Marketing of High Value Crops in the Highlands	IHPSSERD	Characterization and Performance Evaluation of New Anthurium Accessions Developed from In-vitro	HORTI
Project on Gender and Education	IHPSSERD	Postharvest Studies on High Value Crops	HORTI
Establishing a Socio-Economic Research and Development Data Base and Local Network in CAR	IHPSSERD		
Project on Gender and Development	IHPSSERD		



*Potato
variety
Igorota*



*Sweet
potato
variety
VSP-6*



*New
Anthurium
Accessions*

Technologies Generated and Publications

Six technologies were developed and are now ready for dissemination. These are :

- Sweetpotato-based processed products: camote-strawberry candy
- New varieties of anthurium recommended for pot culture: RCM 18 (light orange), RCM 13 (white double) and RCM 19 (bright orange).
- Cultural practices for improved strawberry production: chilling plants for four weeks at 5°C before transplanting
- In-vitro propagation protocols and mass production for colored callas: shoots grown in a multiplication medium containing full strength of Murashige and Skoog (MS) medium with 3.0 mg/li benzyladenine
- In-vitro propagation protocols and mass production technique for chrysanthemum: propagule multiplication by repeated subculture using single or two node cuttings in solidified Murashige and Skoog based medium supplemented with 1 mg/li BA/0.5 mg/l BA, 10% coconut water and 2% sucrose
- Hyperparasites of white rust of chrysanthemum: hyperparasites isolates gave comparable effects to sequential spraying of fungicides in resistant varieties of chrysanthemum

Information documents were produced/published as follows:

- Research Digest Vol nos. 1 & 2
- PHILARM Notes Vol nos. 1 & 2
- Directory of Socio-economic Research and Development Institutions in Baguio and Benguet
- Compendium of Abstracts of Researches and Feasibility Studies of Selected Line Agencies and Non-government Organizations

Role of the University in the National Research, Development and Extension Network

The University was identified by DA-BAR as lead/cooperating agency/ station for the following commodities :

- Vegetable Crops Network
- Ornamental Crops Network
- Plantation Crops Network
- Regional Station for Rice Network
- Biotechnology Network
- Livestock Network
- Socio-economic Network



The President, recipient of the Dioscoro L. Umali Medal for Outstanding Science Administrator

Awards

- Dr. Cipriano C. Consolacion, University President, received the Dioscoro L. Umali Medal for Outstanding Science Administrator Award from DOST in recognition of the University's scientific and technological breakthroughs that were made possible through his able leadership.
- The HARRDEC received the Ugnay Award from PCARRD as the best R&D consortium in the research network. HARRDEC is an R&D consortium in CAR that is based in the University.
- Some University researchers got the first and third prizes for the Best Technology Category and Best Poster Competition during the Annual Regional Symposium on R&D Highlights and Farmers Forum
- During the HARRDEC Techno Fair, the University got the second place for Best Exhibit



PTAP on economic tree/passion fruit production at Caliking, Atok, Benguet

Extension programs

The list of extension projects is presented in Table 10. The Agri-school on the Air Program has been in its fourth year of implementation since 1996. The program goes on the air early in the morning from Monday to Friday. The BSU Sa Barangay conducts consultation by pooling experts from the University to address particular issues or needs of the barangay concerned. The Participatory Technology Adoption Program started two programs in June 1999: PTAP on economic tree/passion fruit production and PTAP on the rehabilitation of depleted and sick soils in Benguet.

Table 10. Extension programs

<i>Extension Program</i>	<i>Accomplishments</i>
Agri-school on the air	Graduated 18 farmers; and aired 22 topics in agriculture by 20 resource persons
BSU sa Barangay	Served 40 barangays in 12 municipalities of Benguet, Nueva Viscaya, Ilocos Sur, La Union and Mt. Province to 1595 farmer beneficiaries by 26 resource persons
Participatory Technology Adoption Program (PTAP)	Launched PTAP on economic tree/passion fruit production; and on rehabilitation of depleted and sick Soils
Technology Packaging and Publication	Produced 14 information, education and communication (IEC) materials availed of by 733 persons
Training Outreach	Conducted/co-sponsored 16 training programs participated by 430 trainees



*Consultation during
the BSU sa
Barangay*

Award

The BSU sa Barangay Program was a regional winner. In the first nationwide "Search for the Most Outstanding Project Undertaken Through Volunteerism in Higher Education". The search was sponsored by the Philippine National Volunteer Service Coordinating Agency (PNVSCA). A trophy with P10,000 cash award was received at Malacanang Palace on 10 December 1999.



*The trophy for the BSU
sa Barangay being pre-
sented to the President
by Dr. Rosana P. Mula,
Director of Extension*



Some of the University processed food products

Income-Generating Projects

The University is also mandated to develop and implement production programs through the University Business Affairs Office (UBAO) in coordination with various income-generating projects, other units and colleges. By transforming some of its resources into agribusiness, livelihood enhancement activities and other production projects to augment its financial resources, it has complemented academic instruction, research and extension.

The income-generating projects and the income derived from these projects are presented in Table 11. Services and food production projects realized a total income of P5,168,949.93. Food products processed by the Food Processing Center and animal and vegetable products from the University farm are marketed at the University Marketing Center.

Fund 163 projects realized an overall decrease (-2.01%) in total income as compared to 1998 income. Fund 161 projects, on the other hand, increased income by 123.74%. The entrepreneurial transformation of project management has contributed to the profitability of its growth.



Processed food products are sold at the University Marketing Center

University Income

Income was also generated from tuition fees and land and facilities rental. These constitute the operating and service income (Special Trust Fund). The total income generated was P11,944,335.79.

Table 11. Income-generating projects (Fund 163 and Fund 161)

<i>Project</i>	<i>Income</i>
Fund 163 Project	
Cafeteria	P342,725.49
High School Canteen	73,725.49
Engineering Canteen	62,766.26
Guestel, Home management & Executive House rental	521,138.46
CHET Showcase	121,059.55
Men's Dormitory	61,581.79
Ladies' Dormitory	60,877.64
Veterinary Clinic	23,210.00
Sub-total	1,267,328.87
Fund 161 Projects	
Food Processing	1,366,873.74
Bakery	902,162.35
Pomology	22,041.80
Poultry (Flock 1-1998-1999)	831,834.53
Poultry (Flock 2-1999-2000)	(1,012,245.84)
Dairy	61,772.50
Swine	(22,902.00)
Agro-Forestry	81,713.65
Mushroom	49,788.50
Floriculture (Greenhouse)	45,000.00
Marketing Center	378,877.39
Multi-Vegetable Production	257,864.60
Strawberry Production	(73,401.00)
Sub-total	3,901,626.06
Grand Total	P5,168,949.93

Oath taking of the President was administered by Hon. Angel C. Alcala



Administration

The President of the University was re-appointed by the Board of Regents for a term of four years. Along with his re-appointment, he made some new appointments and re-appointments of the members of the Administrative Council (Appendix 2). The University has 610 personnel, 91% of which are occupying permanent employment status (Table 12).

Table 12. Distribution of personnel by employment status

<i>Status</i>	<i>1998</i>	<i>1999</i>
Permanent	517	558
Substitute	12	6
Casual	17	11
Contractual-Revolving fund/ Income generating projects	42	28
Special projects	-	7
Total	588	610

Faculty and Staff Development

There are 30 faculty members who are enjoying scholarships /grants here or abroad while three are on sabbatical leave . Twelve of them are taking MS and 18, PhD/EdD. Four of the PhD/EdD candidates are enjoying the following international scholarships:

1. Joint Japan World Bank Graduate Scholarship Program (University of Ghent, Belgium)
2. Australian Agency for International Development (University of New England, New South Wales)
3. Australian Sponsored Training Scholarships Program (University of New England, New South Wales)
4. Belgian Administration Development Cooperation (University of Ghent, Belgium)

In the College of Agriculture, four obtained PhD in various fields of agriculture from prestigious universities in the Philippines, Asia and Europe. Most of the faculty members and staff participated in international and local trainings and seminars.



University officials forging institutional linkages

Initiatives and Linkages

As of 1999, memoranda of agreement and understanding on cooperation in instruction and research pursuits were forged with 26 international and 38 local linkages. Some of the institutional linkages forged with local and international organizations are shown in Table 13. These linkages do not include those forged by faculty and staff and colleges or units on their own initiatives.

Table 13. Institutional linkages forged with local and international organizations

Local Linkages	International linkages
<p><i>BSU-ASPECTS</i>(Luzon) <i>BSU-BENECO-DMMSU</i> <i>BSU-BNFE-BECS</i> (Pasig City) <i>BSU-BPRE</i> (Bureau of Post-harvest Research and Extension) <i>BSU-BSWM</i> (Bureau of Soils and Water Management), Quezon City <i>BSU-CARE</i> (Baguio City) <i>BSU-CECAP-CASCADE-CHARMP</i> (Special Projects)</p>	<p><i>Belgium-Philippines Project</i> (VLIR-ABBOS And SLU-BSU Project) Egmonstract 5 – 1000 Brussel Belgium <i>Cheju Junior College</i>, South Korea <i>CHEMONICS</i> International in Cooperation with ASAP Philippines Washington DC, USA <i>Children Rights Universities Network</i> (CRUN) Gent City, Belgium <i>DAE DYUNGCO, LTD.</i>, South Korea</p>
<p><i>BSU-DA-CARFU</i> <i>BSU-DILG-CAR</i> (Department of Interior And Local Government)</p>	<p><i>Erasmus University of Rotterdam</i> (EUR), Burg., Oudlaan 50 3063 PA, Rotterdam <i>Han Kyong National University</i>, Korea</p>
<p><i>BSU-DOE-NCED</i> (Central Office) <i>BSU-DOST</i> (Central Office) <i>BSU-DOST-CAR</i> <i>BSU-DSAC</i> (now Cavite State University) Indang, Cavite <i>BSU-Baliuag College</i> <i>BSU-Federation of Cutflovers</i> Association of Benguet <i>BSU-IPB at UPLB</i> (Institute of Plant Breeding) <i>BSU-IRRI at Los Baños</i></p>	<p><i>Humanitarian Education and Long—term Project</i> (H.E.L.P.) based at the University of Edinburg, Scotland, United Kingdom <i>International Agricultural Center</i> (IAC) <i>International Potato Center</i> (CIP) <i>Japan International Cooperation Agency</i> (JICA) <i>JOCV</i> Philippines <i>John Hopskin Program</i> for International Education in Reproductive Health</p>
<p><i>BSU-King Louis Farms, Inc.</i> (Baguio City)</p>	<p><i>Kochi Prefecture Policy Research Center</i></p>
<p><i>BSU-LA TONDEÑA</i> (Quiapo, Metro Manila) <i>BSU-LA TRINIDAD GOVERNMENT</i></p>	<p><i>KOICA</i> Philippines <i>Malaspina University</i> (900 Fifth Street Nanaimo, BC Canada V9R 5S5)</p>
<p><i>BSU-NAFC of DA</i>, Quezon City <i>BSU-NEDA-CAR</i> <i>BSU-NIA-CAR</i> (National Irrigation Administration) <i>BSU-NMYC</i> (Baguio City)</p>	<p><i>NODAI Center for International Program</i>, Japan. NODAI is based at the Tokyo University of Agriculture, Japan</p>
<p><i>BSU-PCA</i> (Philippine Coconut Authority) Quezon City <i>BSU-PCARRD</i> (Los Baños, Laguna) <i>BSU-PHILRICE</i> (Munoz, Nueva Ecija) <i>BSU-PHRTC at UPLB</i> (Post Harvest and Research and Training Center) <i>BSU-Pilipinas Shell, Inc.</i> <i>BSU-Plan International</i> (Baguio City) <i>BSU-POPULATION COMMISSION</i> (Baguio City) <i>BSU-PTRI</i> (Manila and La Trinidad)</p>	<p><i>OISCA International</i> <i>Sangju National University</i>, South Korea <i>Science and Technology Agency (STA)</i>/ National Institute of Agrobiological Resources (NIAR), Ministry of Agriculture, Forestry and Fisheries (MAFF), Tsukuba Science City, Japan <i>The Asian Vegetable Research and Development Center</i> <i>University of Ghent</i>, 653 Coupere Links, Belgium <i>University of Hongkong</i></p>
<p><i>BSU-SEARCA</i> (Los Banos, Laguna) <i>BSU-SUC at CORDILLERA REGION</i> <i>BSU-TAPI-DOST</i> (Taguig, Metro Manila) <i>BSU-UPLB</i> (Agroforestry Project) <i>BSU-UPLB- NAAP</i> (National Azolla Action Program) <i>BSU-USM-VisCA</i> (Univeristy of Southern Mindanao, Cotabato and Visayas State College of Agriculture, Baybay, Leyte)</p>	<p><i>University of New England</i>, New South Wales <i>User's Perspective with Agricultural Research and Development</i> (UPWARD) <i>Wageningen Agricultural University</i>, Netherlands</p>

Infrastructure, Equipment and Facilities

In 1999, 13 infrastructure projects costing P11,275,648.00 were implemented (Table 14). These include new projects and repairs of existing facilities whose funding came from the national budget.

Through the Philippine Institutional University Cooperation Programme (PIUC), the University through the Regional Information Technology Center (RITC) has installed the internet server while the fiber optic cabling is nearing completion. In addition to this, two brand new vehicles were purchased and 20 computer workstations were distributed to key offices at BSU.



Road network constructed during the year at the staff housing

Table 14. Infrastructure projects in 1999

<i>Project</i>	<i>Amount</i>	<i>Status/Completion</i>
Regular Project		
Road Network – Site II Faculty-staff housing area	P1,670,000.00	96%
Road Network – Site II Faculty-staff housing area, Forestry Bldg, Tabangaoen	1,167,000.00	30%
Dormitory – Phase III	1,960,000.00	75%
Marketing Center at km 5	1,940,000.00	80%
Sub-total	6,737,000.00	
Repair of Existing Bldg.		
Agri-business building	366,000.00	96%
Animal Science building 1, 2, laboratory and recovery room	550,000.00	95%
R & D Center	414,900.00	96%
Closed Gymnasium	2,255,000.00	15%
CVM Building	184,100.00	10%
Comfort room of High School Building	392,000.00	40%
President's Office	71,648.00	100%
Sub-total	4,335,648.00	
Total	P 11,275,648.00	



The vehicles acquired through the PIUC project



The internet connection at the Regional Information Technology Center



Database server in the Office of the President

Budget

The budget of the University from the national government was P159,089,000 (Table 15). In addition to this, P9,152,000.00 was received also for Retirement Life Insurance Premium (RLIP) as government share. The budget was allocated for personal services (75%), maintenance and other operating expenses (17%) and capital outlay (8%). The allocation of the budget is shown in Figure 8. The budget of 1999 increased by 4.2% from that of 1998.

Other sources of budget negotiated during the year are presented in Table 16. These fundings were sourced for the development of information technology, computerization, acquisition of state-of-the-art research and laboratory materials and for faculty and staff development to strengthen instruction, research and development and extension capabilities.

Table 15. Comparison of the University budget for 1998 and 1999

Particulars	1998 (x 000)	1999 (X 000)
Personal Services	109,664.31	76,233.00
Maintenance and Other Operating Expenses	25,010.50	27,319.00
Capital Outlay	18,000.00	13,500.00
Total	P152,674.81	P159, 089.00

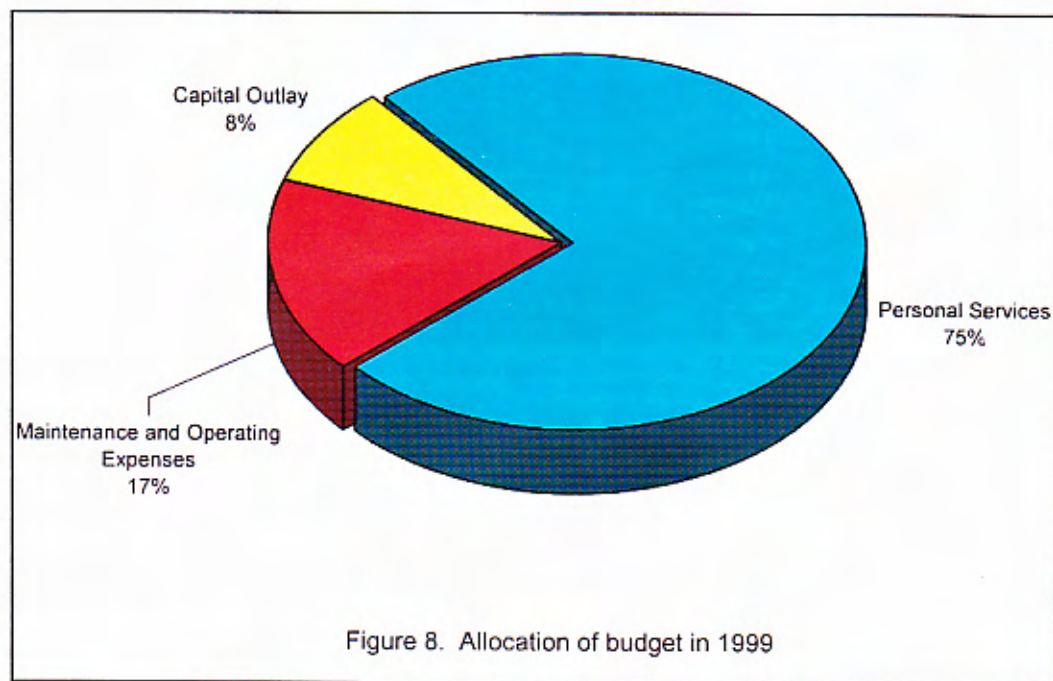


Table 16. Other sources of budget negotiated during the year

<i>Budget source</i>	<i>Amount</i>
VLIR-BSU Project	P32.17 M
DA-BAR – Institutional support	2.0 M
DOST upgrading of instructional facilities	1.0 M
DA-PhilRice Project	17.0 M
BNFE Project	2.3 M



Trainers training conducted at the Regional Information Technology Center

Appendix 1. Curricular Offerings

GRADUATE STUDIES			
Degree Program Doctor of Philosophy (PhD)	Specialization Agricultural Education Horticulture Language Education Rural Development Science Education	Degree Program Master of Arts in Education (MAEd) Master of Arts (MA)	Specialization Education and Administration Elementary Education Guidance and Counseling Home Economics Physics Physical Education Social Studies
Doctor of Education (EdD)	Educational Management		English as a Second Language Filipino as a Second Language Technology and Home Economics Chemistry General Science
Master of Science (MS)	Agricultural Economics Agricultural Education Agronomy Animal science Biology Botany Entomology Extension Education Horticulture Plant Pathology Rural Development Soil Science Forestry	Master of Resource System Management (MRSM) Master of Forestry (MF)	Mathematics Applied Statistics
Master in Public Administration (MPA)	Public Administration		
UNDERGRADUATE STUDIES			
College of Agriculture BS Agriculture BS Agribusiness BS Development Communication* Diploma in Agroforestry College of Arts and Sciences BS Applied Statistics BS Environmental Science BS Information Technology* College of Engineering and Applied Technology BS Agricultural Engineering Certificate in Basic Automotive Technology Certificate in Advance Automotive Technology College of Forestry BS Forestry Forest Ranger Certificate Course		College of Home Economics and Tech. BS Home Economics BS Nutrition and Dietetics Certificate in Home Management College of Nursing BS Nursing College of Teacher Education BS Agricultural Education B Secondary Education B Elementary Education Secondary Education Elementary Education College of Veterinary Medicine BS Animal Technology Doctor of Veterinary Medicine Institute of Physical Education and Sports Diploma in Physical Education	
NON-FORMAL EDUCATION			
Tailoring	Dressmaking	Food processing	Baking course
OPEN UNIVERSITY			
Master's Degree (Distance Education Program)		Short Term Courses	

Appendix 2. The Administrative Council

CONSOLACION, Cipriano C.
Chair and Presiding Officer, University
President

BAWANG, Franco T., Sr.
Vice Chair, Executive Vice President

BENGWAYAN, Grace T.
Secretary, University and Board Secretary

BULIYAT, Marcos A.
Member, Vice President for Academic
Affairs (Re-designated as of 01 December
1999)

COLTING, Rogelio D.
Member, Vice President for Research and
Extension (Re-designated as of 01 October
1999)

AVILA, Jane K.
Member, Dean- College of Home
Economics and Technology

BALANGEN, Melecio A.
Member, Dean- College of Forestry

CAWAON, Florence C.
Member, Dean-College of Nursing
(Re-designated as of 24 June 1999)

CHUA Edna A.
Member, Dean-College of Arts and
Sciences

PADUA, Danilo P.
Member, Dean- College of Agriculture
Effective 01 June 1999
Director, Planning and Development
Until 17 November 1999

MADDUL, Sonwright B.
Member, Dean-College of Agriculture
Until 31 May 1999

BAGANO, Juliet P.
Member, Coordinator - Open University

DIEGO, Ruth C.
Member, Dean-College of Veterinary
Medicine, Effective 10 June 1999

COTIW-AN, Basito S.
Member, Dean- College of
Veterinary Medicine, Until 09 June 1999

SOLIMEN, Julia A.
Member, Dean-Graduate School
Until 15 October 1999

GARIN, Dominador S.
Member, Dean- Graduate School
Effective 16 October 1999
Dean-College of Teacher Education
Until 17 November 1999

LUBRICA, Percyveranda A.
Member, Dean-College of Teacher Education,
Effective 18 November 1999

BOLINTO, Henry K.
Member, Chair- Secondary Education Training
Department

CELINO, Sonia M.
Member, Chair-Elementary Education Training
Department

LACONSAY, Eduardo P.
Member, Director-Institute of Physical Education and
Sports
Effective 18 November 1999

AQUINO, Francisco R.
Member, Director-Institute of Physical Education and
Sports
Until 17 November 1999

LEE, Gloria R.
Member, Director-Institute of Public Administration
Effective November 1999

ARCISO, Theodore T.
Member, Director-Institute of Public Administration
Until October 1999

CASTRO, Paul S.
Member, ROTC Commandant

TANDANG, Leoncia L.
Member, Director-Research
Re-designated as of 01 October 1999

MULA, Rosana P.
Member, Director-Extension
Effective November 1999

BALAKI, Edwin T.
Member, Director – Extension
Until October 1999
President-BSU Employees
Association, Until October 1999

ALIPIT, Percival B.
Member, Director-Horticulture Research and Training
Institute
Effective 03 November 1999

VILLANUEVA, Luciana M.
Member, Director-Horticulture Research and Training
Institute

DIMAS, Benjamin B.
Member, Director- Institute of Highland Farming
Systems and Agroforestry

GANGA, Zenaida N.
Member, Director-Highland Agriculture and
Resources Research Consortium

PEREZ, Jocelyn C.
Member, Director-Northern Philippine Root
Crops Research and Development Center

TAGARINO, Darlyn D.
Member, Director- Institute of Highland and Pol-
icy Studies and Socio-Economic Research and
Development

CLARAVALL, Nora J.
Member, Director-University Library Services

DIMAS, Caroline B.
Member, Director-Admissions Office

MINA, Wilfredo B.
Member, Director of Student Affairs

GLASER, Ricky Nell M.
Member, President-Supreme Student Council
Effective August 1999

MANUEL, Roy B.
Member, President-Supreme Student Council
Until July 1999

LATAWAN, Vilma
Member, Editor-in-Chief-Mountain Collegian
Effective July 1999

LOPEZ, Ronald C.
Member, Editor-in-chief-Mountain Collegian
Until June 1999

FORMARAN, Villa L.
Member, Chief-Medical Services

BALWEG, Bienvenido M.
Member, Director-Media and Publications

TAGARINO, Leopoldo N.
Member, Director-University Business Affairs

ANGIWAN, Matias C., Jr.
Member, Legal Officer

MERESTELA, Tessie M.
Member, Director-Planning and Development
Effective 18 November 1999

GRANDE, Wagner F.
Member, Information Officer II

TIPAYNO, Alfredo C.
Member, Chief-Land Reservation Office
Effective 18 November 1999
President-BSU Employees Association
Effective November 1999

BOLINTO, Violeta B.
Member, Chief, Internal Audit Services
Effective 15 March 1999

NARAG, Sherelyn A.
As observer, Resident Auditor-Commission on
Audit

RAMOS, Estrella A.
Member, Chief-General Administrative
Services Division

ESTEBAN, Emilia M.
Member, Chief-Human Resource Management
Office

LIMPIN, Victoria L.
Member, Chief-Records Management Office

DEMOT, Juliet D.
Member, Chief-Supply Management Office

VICTOR, Priscilla P.
Member, Chief-Financial Services Division

RAPUSO, Mary Joy S.
Member, Chief-Accounting Office

ALAGAO, Ludivina O.
Member, Chief-Budgeting Office

LIMPIN, Oscar B.
Member, Chief-Cashiering Office

LAPICTO, Eladio O.
Member, Director-General Services

DANGWA, Olga C.
Member, Special Assistant for Community
Affairs

MONROE, Remigio, E., Jr.
Member, Director-Presidential Committee on
Culture and the Arts

BANIWAS, Tranquilino B.
Member, President-BSU Non-Teaching
Association, Effective 01 October
1999

AQUINO, Estela U.
Member, President-BSU Non-Teaching
Association
Until 30 September 1999

CADATAL, Macario D.
Member, President-BSU Faculty Club
Effective 15 September 1999

MAYOS, Dizon T.
Member, President-Faculty Club
Until 14 September 1999

Appendix 3. The Board of Regents in 1999

Hon. Angel C. Alcala
Chair and Commissioner
Commission on Higher Education
Until July 1999



Hon. Kate C. Botengan
Chair and Presiding Officer
Commission on Higher Education
Effective August 1999



Hon. Cipriano C. Consolacion
Vice Chairman and President
Benguet State University



Hon. Teresa Aquino Oreta
Member and Chair
Senate Committee on Education,
Culture and Sports



Hon. Dante V. Liban
Member and Chair
Congressional Committee on Education,
Culture and Sports





Hon. Juan B. Ngalob
Member and Regional Director
National Economic and Development Authority
Cordillera Administrative Region



Hon. Faustino K. Maslan
Member and Regional Director
Department of Agriculture-
Cordillera Administrative Region
Until November 1999



Hon. Libertito S. Feliciano
Member and Regional Director
Department of Agriculture-
Cordillera Administrative Region
Effective December 1999



Hon. Ben. D. Ladilad
Member and Regional Director
Department of Science and Technology
Cordillera Administrative Region



Hon. Carlos T. Buasen, Sr.
Member and President
BSU Alumni Association, Inc.
Until November 1999

Hon. Jones K. Feliciano
Member and President
BSU Alumni Association, Inc.
Effective December 1999



Hon. Dizon T. Mayos
Member and President
Faculty Club
Until October 1999



Hon. Macario D. Cadatal
Member and President
BSU Faculty Club
Effective November 1999



Hon. Roy B. Manuel
Member and President
BSU Supreme Student Council
Until July 1999



Hon. Rickynell M. Glaser
Member and President
BSU Supreme Student Council
Effective August 1999



Ms. Grace T. Bengwayan
Board Secretary IV
Benguet State University



Appendix 4. Abbreviations and Acronyms

AACCUP	Accrediting Agency of Chartered Colleges and Universities of the Philippines
BAR	Bureau of Agricultural Research
BEE	Bachelor of Elementary Education
BNFE	Bureau of Non-Formal Education
BSA	Bachelor of Science in Agriculture
BSAB	Bachelor of Science in Agribusiness Management
BSAEd	Bachelor of Science in Agricultural Education
BSAEng	Bachelor of Science in Agricultural Engineering
BSAS	Bachelor of Science in Applied Statistics
BSAT	Bachelor of Science in Animal Technology
BSDC	Bachelor of Science in Development Communication
BSE	Bachelor of Secondary Education
BSES	Bachelor of Science in Environmental Science
BSF	Bachelor of Science in Forestry
BSHE	Bachelor of Science in Home Economics
BSIT	Bachelor of Science in Information Technology
BSN	Bachelor of Science in Nursing
BSND	Bachelor of Science in Nutrition and Dietetics
BSU	Benguet State University
BSUEA	Benguet State University Employees Association
BSUNTA	Benguet State University Non Teaching Association
CA	College of Agriculture
CAR	Cordillera Administrative Region
CAS	College of Arts and Sciences
CEAT	College of Engineering and Applied Technology
CF	College of Forestry
CHET	College of Home Economics and Technology
CN	College of Nursing
CTE	College of Teacher Education
CVM	College of Veterinary Medicine
DA	Department of Agriculture
DOST	Department of Science and Technology
DVM	Doctor of Veterinary Medicine
GS	Graduate School
HARRDEC	Highland Agriculture and Resources Research Development Consortium
HORTI	Horticultural research and Training Institute
IEC	Information, education and communication
IHFA	Institute of Highland Farming Systems and Agroforestry
IHPSSERD	Institute of Highland Policy Studies and Socio-Economic Research and Development
IPM	Integrated Pest Management
JICA	Japan International Cooperative Agency
KOICA	Korea International Cooperation Agency
MAFF	Ministry of Agriculture, Forestry and Fisheries (Japan)

NAAP	National Azolla Action Program
NAFC	National Agriculture and Fisheries Council
NIA	National Irrigation Administration
NIAR	National Institute of Agrobiological Resources
NPRCRTC	Northern Philippine Root Crops Research and Development Center
OU	Open University
PCA	Philippine Coconut Authority
PhilRice	Philippine Rice Research Institute
PHRTC	Post Harvest Research and Training Center
PIUC	Philippine Inter-University Council
PTAP	Participatory Technology Adoption Project
RITC	Regional Information and Technology Center
RLIP	Retirement Life Insurance Premium
STA	Science and Technology Agency (Japan)
SUC	State Universities and Colleges
TAPI	Technology Application and Promotion Institute
UPLB	University of the Philippines Los Banos
USAID	United States Assistance for International Development
USM	University of Southern Mindanao
ViSCA	Visayas State College of Agriculture
VLIR	Vlaamse Inter - Universitaire Raad (Flemish Inter-University Council)

Production Staff

Production Coordinator and Writer

Production Assistant

Editor

Cover Design and Lay-out

Photographer

Contributors

Consultants

Acknowledgement to

Tessie M. Merestela
Wagner F. Grande
Rodolfo T. Abastilla
Flordeliza O. Naje
and Julie Ann R. Dugat
Ray C. Piluden
Grace T. Bengwayan
Reynaldo B. Buenavista
Amelia M. Kimeu
Wilfredo B. Estolas
Cipriano C. Consolacion
Franco T. Bawang
Marcos A. Buliyat
Rogelio D. Colting
Regional Information
Technology Center
and its SLU-STI On-the-
Job Trainees

1999 Annual Report
Produced by
Planning and Development Office
Benguet State University
La Trinidad, Benguet
Philippines
merestela-pdo@bsu.edu.ph